

WSJT-X v1.9.1 by K1JT

File Configurations View Mode Decode Save Tools Help

Band Activity					Rx Frequency				
UTC	dB	DT	Freq	Message	UTC	dB	DT	Freq	Message
153530	-4	-0.5	1170	~ CQ K3ZK FN01					
153530	-12	-0.6	1683	~ ER5DX 9G5					
153530	-13	-0.7	1792	~ SV1JDX P2					
153545	-8	-0.6	801	~ K14KWR CQ					
153545	-15	-0.6	1081	~ CQ VA3HP					
153545	-15	-0.2	2401	~ CQ VA3CP					
153600	-14	-0.9	591	~ K5CD I1R					
153600	-8	-0.5	1169	~ F8CRS K3J					
153600	-16	-0.6	1683	~ ER5DX 9G5					
153600	-7	-0.7	1792	~ PE1FBC P2					
153615	-10	-0.6	801	~ K14KWR CQ					
153615	-16	-0.6	1081	~ CQ VA3HP					
153615	-15	-0.2	2401	~ SV2RQC W2					
153630	-15	-0.8	592	~ K5CD I1R					
153630	-14	-0.6	975	~ DG9MGU N8					
153630	-9	-0.5	1169	~ F8CRS K3J					
153630	-8	-0.7	1792	~ PE1FBC P2					

CQ only Log QSO Stop Log QSO

17m **18,100 000**

DX Call: 3B8FV DX Grid: Az 251 16553 km

2018 ott 14 15:36:48

Show LoTW flags Show eQSL flags Decoded Callsign Data Tooltip Exit JTAlert

Generate alerts for CQ only Callsigns
 Show only Callsigns generating alerts
 Do not show Worked Before (B4) Callsigns
 Do not show Ignored Callsigns
 No QSL Filters, pass all Alerts
 LoTW member
 eQSL(AG) member
 LoTW OR eQSL(AG) member
 LoTW AND eQSL(AG) member
 User Defined Filter

Calling CQ: CQ Grid: dB: R+dB:

Rx Frequency: TX Watchdog: User Defined Alert:

Enable Tx: Halt Tx: Tune: Menus

Decode Keywords: End of TX/RX period: Start of WSJT-X TX period:

3B8FV 1530 Mauritius 39 53 AF Q

JT65 Band: 160 80 60 40 30 20 17 15 12 10 6 2 #: FT8 Band: 160 80 60 40 30 20 17 15 12 10 6 2 #: Wrk
 Callsign: 0 : Callsign: 0 : Cfm

Desktop icons: VLC, PhotoImp..., Funhouse, Photoshp, OIS, gMML-..., Dreamweaver, WSJT95, Global..., DB-4, RADIOU..., Log Converter, UltimateAC, Log4OM, OMHTABA, WSJT-X - JTAlertX, wejix, QARTGITA, JHS-HP (Q5200)

QSO History: 3B8FV : FT8 QSOs - None

160m	17m	New Band
	15m	
	12m	
	10m	
	6m	
	2m	

*** First FT8 QSO ***

WSJT-X - Wide Graph: Controls 600 800 1000 1200 1400 1600 1800 2000 2200 2400 2600
 15:36:30 17m
 Bins/Pixel 4 Start 300 Hz Palette Adjust... Flatten Ref Spec
 JT65 2500 JT9 N Avg 1 Default Cumulative Smooth 1 Spec 30 %

17:36 14/10/2018

WSJT-X v1.9.1 by K1JT

File Configurations View Mode Decode Save Tools Help

Band Activity					Rx Frequency				
UTC	dB	DT	Freq	Message	UTC	dB	DT	Freq	Message
153630	-14	-0.6	975	~ DG9MGU N8					
153630	-9	-0.5	1169	~ F8CRS K3J					
153630	-8	-0.7	1792	~ PE1FBC P2					
153645	-12	-0.6	801	~ K14KWR CQ					
153645	-19	-0.6	1081	~ CQ VA3HP					
153645	-14	-0.3	2401	~ SV2RQC W2					
153700	-16	-0.9	591	~ K5CD I1R					
153700	-3	-0.5	1168	~ F8CRS K3J					
153715	-3	-0.6	801	~ K14KWR CQ					
153715	-19	-0.6	904	~ PE1IVR K2					
153715	-16	-0.6	1081	~ EA3HYN VJ					
153730	-5	-0.5	1167	~ CQ K3ZK FN01					
153730	-9	-0.6	1792	~ DH2PC P2					
153745	-9	-0.6	801	~ K14KWR CQ					
153745	-17	-0.6	1081	~ EA3HYN VJ					
153745	-12	-0.7	1980	~ I7UNU K8T					
153745	-17	-0.2	2401	~ SV2RQC W2					

CQ only Log QSO Stop Log QSO

17m **18,100 000**

DX Call: 3B8FV DX Grid: Az 251 16553 km

2018 ott 14 15:38:09

Show LoTW flags Show eQSL flags Decoded Callsign Data Tooltip Exit JTAlert

Enable
 Show all triggered Alerts
 Show distance in Miles

Calling CQ: CQ Grid: dB: R+dB: RRR: 73

Rx Frequency: TX Watchdog: User Defined Alert:

Enable Tx: Halt Tx: Tune: Menus

Decode Keywords: End of TX/RX period: Start of WSJT-X TX period:

3B8FV 1530 Mauritius 39 53 AF Q

JT65 Band: 160 80 60 40 30 20 17 15 12 10 6 2 #: FT8 Band: 160 80 60 40 30 20 17 15 12 10 6 2 #: Wrk
 Callsign: 0 : Callsign: 0 : Cfm

Desktop icons: VLC, PhotoImp..., Funhouse, Photoshp, OIS, gMML-..., Dreamweaver, WSJT95, Global..., DB-4, RADIOU..., Log Converter, UltimateAC, Log4OM, OMHTABA, WSJT-X - JTAlertX, wejix, QARTGITA, JHS-HP (Q5200)

QSO History: 3B8FV : FT8 QSOs - None

160m	17m	New Band
	15m	
	12m	
	10m	
	6m	
	2m	

*** First FT8 QSO ***

WSJT-X - Wide Graph: Controls 600 800 1000 1200 1400 1600 1800 2000 2200 2400 2600
 15:38:00 17m
 Bins/Pixel 4 Start 300 Hz Palette Adjust... Flatten Ref Spec
 JT65 2500 JT9 N Avg 1 Default Cumulative Smooth 1 Spec 30 %

17:38 14/10/2018

Band Activity

UTC	dB	DT	Freq	Message	UTC	dB	DT	Freq	Message
153945	-15	-0.7	1980	~	I7UNU	K8TL	73		
153945	-16	-0.2	2401	~	EALICW	WA3C	73		
154000	-15	-0.9	592	~	R5CD	IIRJF	73		
154000	-4	-0.5	1164	~	N4SJM	K3ZK	-05		
154000	-12	-0.6	1792	~	5B4AB	P25RA	-07		
154015	-14	-0.6	476	~	F8DYD	CU3AT	HM68		
154015	-11	-0.6	921	~	HB9FBP	K3WN	73		
154015	-20	-0.6	1425	~	EA3HYN	VA3HP	-18		
154015	-3	0.2	1698	~	P25RA	5B4AB	RM64		
154015	-16	-0.2	2401	~	IW2CYS	WA3C	R-05		
154030	-8	-0.5	1163	~	N4SJM	K3ZK	-05		
154030	-13	-0.7	1792	~	5B4AB	P25RA	-07		
154045	-16	-0.6	477	~	F8DYD	CU3AT	R-05		
154045	-12	-0.2	2401	~	IW2CYS	WA3C	R-05		
154100	-4	-0.5	1162	~	N4SJM	K3ZK	RRR		
154100	-14	-0.7	1792	~	5B4AB	P25RA	-07		
154100	-18	-0.5	1919	~	YV4DYJ	N5LKE	EM45		

Rx Frequency

17m **18,100 000** Tx even/1st

DX Call: 3B8FV DX Grid: Tx 1633 Hz Rx 781 Hz

Az 251 16553 km Report -15

2018 oct 14 15:41:26

JTAlertX 2.10.14 Settings - IK2QIN - [Logging Enabled - HRD V5/V6]

- Alerts**
 - Own Call CQ and QRZ
 - Wanted Prefix Wanted CQ Marathon
 - Wanted US State Wanted DXCC
 - Wanted Continent Wanted CQ Zone
 - Wanted CQ Zone Wanted Grid
 - Miscellaneous Alerts Alerts Priority
 - Worked B4 LoTW / eQSL(AG) Flags
 - Filters Logging
 - Applications Window
 - Miscellaneous Web Services
 - Scan Log and Rebuild Sound Card
 - Station Callsign Program Updates
 - About
- Quick Enable / Disable Audio and Visual Alerts**
 - Own Call
 - Wanted Callsign
 - Wanted US State
 - Wanted DXCC
 - Wanted CQ Zone
 - Decode Keywords
 - CQ and QRZ
 - Wanted Prefix
 - Wanted Grid
 - Wanted Continent
 - Wanted CQ Marathon
 - User Defined Alert
- Quick Enable / Disable Audio only Alerts**
 - Out of Shack
 - Start of TX Period
 - TX Watchdog
 - End of TX/RX Period
 - Rx Frequency
- Quick Enable / Disable Visual only Alerts**
 - Band Activity Display
 - LoTW Stripe/Flag
 - Ignored Callsign
 - eQSL(AG) Stripe/Flag
- Decoded Callsign Data Tooltip**
 - Enable
 - Show all triggered Alerts
 - Show distance in Miles

Band Activity

UTC	dB	DT	Freq	Message	UTC	dB	DT	Freq	Message
154015	-11	-0.6	921	~	HB9FBP	K3WN	73		
154015	-20	-0.6	1425	~	EA3HYN	VA3HP	-18		
154015	-3	0.2	1698	~	P25RA	5B4AB	RM64		
154015	-16	-0.2	2401	~	IW2CYS	WA3C	R-05		
154030	-8	-0.5	1163	~	N4SJM	K3ZK	-05		
154030	-13	-0.7	1792	~	5B4AB	P25RA	-07		
154045	-16	-0.6	477	~	F8DYD	CU3AT	R-05		
154045	-12	-0.2	2401	~	IW2CYS	WA3C	R-05		
154100	-4	-0.5	1162	~	N4SJM	K3ZK	RRR		
154100	-14	-0.7	1792	~	5B4AB	P25RA	-07		
154100	-18	-0.5	1919	~	YV4DYJ	N5LKE	EM45		
154115	-17	-0.6	1426	~	EA3HYN	VA3HP	-18		
154115	-4	-0.4	1698	~	9G5AR	5B4AB	RM64		
154130	-15	-0.8	889	~	F4FIR	K8TL	EM89		
154130	-7	-0.5	1161	~	N4SJM	K3ZK	73		
154130	-18	-0.5	1919	~	YV4DYJ	N5LKE	EM45		
154145	-12	-0.2	2401	~	CQ	WA3C	EN90		

Rx Frequency

17m **18,100 000** Tx even/1st

DX Call: 3B8FV DX Grid: Tx 1633 Hz Rx 781 Hz

Az 251 16553 km Report -15

2018 oct 14 15:42:03

JTAlertX 2.10.14 Settings - IK2QIN - [Logging Enabled - HRD V5/V6]

- Alerts**
 - Own Call Alert**

Own Call alerts are generated whenever either of your own callsigns appears in a decoded exchange. Typically, you being called, receiving a report, receiving an RRR and receiving a 73. If your name is detected in a free-form exchange, for example "TU NAME 73" this will also generate the Alert.

 - Options Play Alert when decoded Callsign worked B4
 - Alert Callsigns & Names

Callsign #1	IK2QIN	Callsign #2	
Name #1		Name #2	
 - Alert Color
 - Alert Sound

Wave File Path:

Volume:

WSJT-X v1.9.1 by K1JT

Band Activity

UTC	dB	DT	Freq	Message	UTC	dB	DT	Freq	Message
154015	-11	-0.6	921	HB9FBP K3WV 73					
154015	-20	-0.6	1425	EA3HYN VA3HP -18					
154015	-3	0.2	1698	F25RA 5B4AAB RM64					
154015	-16	-0.2	2401	IW2CYS WA3C R-05					
154030	-8	-0.5	1163	N4SJM K3ZK -05					
154030	-13	-0.7	1792	5B4AAB P25RA -07					
154045	-16	-0.6	477	F8DYD CU3AT R-05					
154045	-12	-0.2	2401	IW2CYS WA3C R-05					
154100	-4	-0.5	1162	N4SJM K3ZK RRR					
154100	-14	-0.7	1792	5B4AAB P25RA -07					
154100	-18	-0.5	1919	YV4DYJ N5LKE EM45					
154115	-17	-0.6	1426	EA3HYN VA3HP -18					
154115	-4	-0.4	1698	9G5AR 5B4AAB RM64					
154130	-15	-0.8	889	F4FIR K8TL EM89					
154130	-7	-0.5	1161	N4SJM K3ZK 73					
154130	-18	-0.5	1919	YV4DYJ N5LKE EM45					
154145	-12	-0.2	2401	CQ WA3C EN90					

Rx Frequency

18,100,000 Hz

388FV

Az 251 16553 km

2018 ott 14 15:42:08

JTAlertX 2.10.14 Settings - IK2QIN - [Logging Enabled - HRD V5/V6]

Alerts

- Own Call
- CQ and QRZ**
 - Enable CQ and QRZ Alert**
CQ and QRZ alerts are generated whenever the first word of the WSJT-X decoded exchange is "CQ" or "QRZ". Non-standard CQ and QRZ exchanges are also detected. "CQ DE", "QRZ DE", "QRZ?", "CQDX", "CQ DX" and "CQ USSTATE" will also trigger this alert.
 - Options (for WSJT-X double-clickable CQ decodes)
 - Directional CQs indicator and border will override the All CQs settings
 - *** indicator (All CQs) # indicator (Directional CQs)
 - Show border around Callsign
 - Show All CQs Border Color
 - Show Directional CQs Border Color
 - Alert Color Sample Set Font Color Set Background
 - Alert Sound Wave File Path Clear
 - Volume 50% Test Select Default
- Wanted Prefix
- Wanted CQ Marathon
- Wanted US State
- Wanted DXCC
- Wanted Continent
- Wanted CQ Zone
- Wanted Grid
- Miscellaneous Alerts
- Alerts Priority
- Worked B4
- LoTW / eQSL(AG) Flags
- Filters
- Logging
- Applications
- Window
- Miscellaneous
- Web Services
- Scan Log and Rebuild
- Sound Card
- Station Callsign
- Program Updates
- About

JTAlert by VK3AMA

WSJT-X v1.9.1 by K1JT

Band Activity

UTC	dB	DT	Freq	Message	UTC	dB	DT	Freq	Message
154030	-8	-0.5	1163	N4SJM K3ZK -05					
154030	-13	-0.7	1792	5B4AAB P25RA -07					
154045	-16	-0.6	477	F8DYD CU3AT R-05					
154045	-12	-0.2	2401	IW2CYS WA3C R-05					
154100	-4	-0.5	1162	N4SJM K3ZK RRR					
154100	-14	-0.7	1792	5B4AAB P25RA -07					
154100	-18	-0.5	1919	YV4DYJ N5LKE EM45					
154115	-17	-0.6	1426	EA3HYN VA3HP -18					
154115	-4	-0.4	1698	9G5AR 5B4AAB RM64					
154130	-15	-0.8	889	F4FIR K8TL EM89					
154130	-7	-0.5	1161	N4SJM K3ZK 73					
154130	-18	-0.5	1919	YV4DYJ N5LKE EM45					
154145	-12	-0.2	2401	CQ WA3C EN90					
154200	-13	-0.8	889	F4FIR K8TL R-01					
154200	-6	-0.5	1160	CQ K3ZK EN21					
154200	-15	-0.7	1792	Y7BETJ P25RA R-04					
154200	-18	0.1	2508	YU1AB K5BJ EM45					

Rx Frequency

18,100,000 Hz

388FV

Az 251 16553 km

2018 ott 14 15:42:18

JTAlertX 2.10.14 Settings - IK2QIN - [Logging Enabled - HRD V5/V6]

Alerts

- Own Call
- CQ and QRZ
- Wanted Prefix**
 - Enable Wanted Prefix Alert**
JTAlert doesn't maintain a list of "Needed Prefixes" like the States and DXCCs, which have discrete defined lists. A list of all possible prefixes would be very large and is not practical. Instead JTAlert maintains a list of no-longer needed prefixes. This way any encountered prefix will generate an alert unless it is in the "No Longer Needed" list.
To maintain the list of "No Longer Needed" prefixes, you need to do a Log Scan. There is no option for manual settings for prefixes.
 - Options
 - Play Alert when decoded Callsign worked B4
 - Alert Color Sample Set Font Color Set Background
 - Alert Sound Wave File Path Clear
 - Volume 50% Test Select Default
- Any Band
- Wanted CQ Marathon
- Wanted US State
- Wanted DXCC
- Wanted Continent
- Wanted CQ Zone
- Wanted Grid
- Miscellaneous Alerts
- Alerts Priority
- Worked B4
- LoTW / eQSL(AG) Flags
- Filters
- Logging
- Applications
- Window
- Miscellaneous
- Web Services
- Scan Log and Rebuild
- Sound Card
- Station Callsign
- Program Updates
- About

JTAlert by VK3AMA

WSJT-X v1.9.1 by K1JT

File Configurations View Mode Decode Save Tools Help

Band Activity				Rx Frequency					
UTC	dB	DT	Freq	Message	UTC	dB	DT	Freq	Message
154030	-8	-0.5	1163	~	N48JW	K3ZK	-05		
154030	-13	-0.7	1792	~	5B4AAB	P25RA	-07		
154045	-16	-0.6	4777	~	F82YD	CU3AT	R-05		
154045	-12	-0.2	2401	~	1W2CYS	WA3C	R-05		
154100	-4	-0.5	1162	~	N48JW	K3ZK	RRR		
154100	-14	-0.7	1792	~	5B4AAB	P25RA	-07		
154100	-18	-0.5	1919	~	YV4DYJ	N5LKE	EM45		
154115	-17	-0.6	1426	~	EA3HYN	VA3HP	-18		
154115	-4	-0.4	1698	~	9G5AR	5B4AAB	RM64		
154130	-15	-0.8	889	~	F4FIR	K8TL	EM89		
154130	-7	-0.5	1161	~	N48JW	K3ZK	73		
154130	-18	-0.5	1919	~	YV4DYJ	N5LKE	EM45		
154145	-12	-0.2	2401	~	CQ	WA3C	EN90		
154200	-13	-0.8	889	~	F4FIR	K8TL	R-01		
154200	-6	-0.5	1160	~	CQ	K3ZK	FN21		
154200	-15	-0.7	1792	~	SV8EJU	P25RA	R-04		
154200	-18	0.1	2508	~	YU1AB	K5BJ	EM45		

17m 18,100 000

388FV 3B8FV Az 251 16553 km Tx 1633 Hz Rx 781 Hz

2018 oct 14 15:42:24

JTAlertX 2.10.14 Settings - IK2QJN - [Logging Enabled - HRD V5/V6]

Alerts

- Own Call
- CQ and QRZ
- Wanted Prefix
 - Any Band
 - Wanted CQ Marathon
 - Any Band
 - Wanted US State
 - Wanted DXCC
 - Wanted Continent
 - Wanted CQ Zone
 - Wanted Grid
 - Miscellaneous Alerts
- Alerts Priority
- Worked B4
- LoTW / eQSL(AG) Flags
- Filters
- Logging
- Applications
- Window
- Miscellaneous
- Web Services
- Scan Log and Rebuild
- Sound Card
- Station Callsign
- Program Updates
- About

Options

Enable Wanted CQ Marathon Alert (2018)

Play Alert when decoded Callsign worked B4

Alert Color: Sample Set Font Color Set Background

Alert Sound: Wave File Path

Volume: 50%

OK Cancel Save

1742 14/10/2018

WSJT-X v1.9.1 by K1JT

File Configurations View Mode Decode Save Tools Help

Band Activity				Rx Frequency					
UTC	dB	DT	Freq	Message	UTC	dB	DT	Freq	Message
154030	-13	-0.7	1792	~	5B4AAB	P25RA	-07		
154045	-16	-0.6	4777	~	F82YD	CU3AT	R-05		
154045	-12	-0.2	2401	~	1W2CYS	WA3C	R-05		
154100	-4	-0.5	1162	~	N48JW	K3ZK	RRR		
154100	-14	-0.7	1792	~	5B4AAB	P25RA	-07		
154100	-18	-0.5	1919	~	YV4DYJ	N5LKE	EM45		
154115	-17	-0.6	1426	~	EA3HYN	VA3HP	-18		
154115	-4	-0.4	1698	~	9G5AR	5B4AAB	RM64		
154130	-15	-0.8	889	~	F4FIR	K8TL	EM89		
154130	-7	-0.5	1161	~	N48JW	K3ZK	73		
154130	-18	-0.5	1919	~	YV4DYJ	N5LKE	EM45		
154145	-12	-0.2	2401	~	CQ	WA3C	EN90		
154200	-13	-0.8	889	~	F4FIR	K8TL	R-01		
154200	-6	-0.5	1160	~	CQ	K3ZK	FN21		
154200	-15	-0.7	1792	~	SV8EJU	P25RA	R-04		
154200	-18	0.1	2508	~	YU1AB	K5BJ	EM45		
154215	-16	-0.2	2401	~	CQ	WA3C	EN90		

17m 18,100 000

388FV 3B8FV Az 251 16553 km Tx 1633 Hz Rx 781 Hz

2018 oct 14 15:42:34

JTAlertX 2.10.14 Settings - IK2QJN - [Logging Enabled - HRD V5/V6]

Alerts

- Own Call
- CQ and QRZ
- Wanted Prefix
 - Any Band
 - Wanted CQ Marathon
 - Any Band
 - Wanted US State
 - Wanted DXCC
 - Wanted Continent
 - Wanted CQ Zone
 - Wanted Grid
 - Miscellaneous Alerts
- Alerts Priority
- Worked B4
- LoTW / eQSL(AG) Flags
- Filters
- Logging
- Applications
- Window
- Miscellaneous
- Web Services
- Scan Log and Rebuild
- Sound Card
- Station Callsign
- Program Updates
- About

Options

Enable Wanted US State Alert

US State alerts are available for either individual bands or any band. Alert is dependent on a US Callsign database file being installed.

Play Alert when decoded Callsign worked B4

Remove spaces from "Callsign - State" hyphen separator

Alert Color: Sample Set Font Color Set Background

Alert Sound: Use individual State Name announcements rather than the single audio alert

Wave File Path

Volume: 50%

OK Cancel Save

1742 14/10/2018

WSJT-X v1.9.1 by K1JT

File Configurations View Mode Decode Save Tools Help

Band Activity				Rx Frequency					
UTC	dB	DT	Freq	Message	UTC	dB	DT	Freq	Message
154030	-13	-0.7	1792	SB4AAB P25RA -07					
154045	-16	-0.6	477	F8DID CU3AT R-05					
154045	-12	-0.2	2401	IM2CIS WA3C R-05					
154100	-4	-0.5	1162	N4SJV K32K RRR					
154100	-14	-0.7	1792	SB4AAB P25RA -07					
154100	-18	-0.5	1919	YV4DYJ N5LKE EM45					
154115	-17	-0.6	1426	EA3HYN VA3HP -18					
154115	-4	-0.4	1698	9G5AR SB4AAB RM64					
154130	-15	-0.8	889	F4FIR K8TL EM89					
154130	-7	-0.5	1161	N4SJV K32K 73					
154130	-18	-0.5	1919	YV4DYJ N5LKE EM45					
154145	-12	-0.2	2401	CQ WA3C EN90					
154200	-13	-0.8	889	F4FIR K8TL R-01					
154200	-6	-0.5	1160	CQ K32K FN21					
154200	-15	-0.7	1792	SV8EJU P25RA R-04					
154200	-18	0.1	2508	YU1AB K5EJ EM45					
154215	-16	-0.2	2401	CQ WA3C EN90					

17m 18,100 000

388FV 3B8FV Az 251 16553 km Tx 1633 Hz Rx 781 Hz

2018 ott 14 15:42:43

JTAlertX 2.10.14 Settings - IK2QJN - [Logging Enabled - HRD V5/V6]

Alerts

- Own Call
- CQ and QRZ
- Wanted Prefix
 - Any Band
 - Wanted CQ Marathon
 - Any Band
 - Wanted US State
 - Any Band
 - Wanted DXCC
 - Wanted Continent
 - Wanted CQ Zone
 - Wanted Grid
 - Miscellaneous Alerts
 - Alerts Priority
 - Worked B4
 - LoTW / eQSL(AG) Flags
 - Filters
- Logging
- Applications
- Window
- Miscellaneous
- Web Services
- Scan Log and Rebuild
- Sound Card
- Station Callsign
- Program Updates
- About

Any Band

Check All UnCheck All

1 of 50 States Wanted

By State Code By State Name

Tracking: Any Band By Individual Mode (JT9, JT65, FT8)

Band Select: 160 80 60 40 30 20 17 15 12 10 6 2

OK Cancel Save

1400 1600 1800 2000 2200 2400 2600

15:42:30 17m

Spec 30%

17:42 14/10/2018

WSJT-X v1.9.1 by K1JT

File Configurations View Mode Decode Save Tools Help

Band Activity				Rx Frequency					
UTC	dB	DT	Freq	Message	UTC	dB	DT	Freq	Message
154100	-4	-0.5	1162	N4SJV K32K RRR					
154100	-14	-0.7	1792	SB4AAB P25RA -07					
154100	-18	-0.5	1919	YV4DYJ N5LKE EM45					
154115	-17	-0.6	1426	EA3HYN VA3HP -18					
154115	-4	-0.4	1698	9G5AR SB4AAB RM64					
154130	-15	-0.8	889	F4FIR K8TL EM89					
154130	-7	-0.5	1161	N4SJV K32K 73					
154130	-18	-0.5	1919	YV4DYJ N5LKE EM45					
154145	-12	-0.2	2401	CQ WA3C EN90					
154200	-13	-0.8	889	F4FIR K8TL R-01					
154200	-6	-0.5	1160	CQ K32K FN21					
154200	-15	-0.7	1792	SV8EJU P25RA R-04					
154200	-18	0.1	2508	YU1AB K5EJ EM45					
154215	-16	-0.2	2401	CQ WA3C EN90					
154230	-14	-0.8	889	F4FIR K8TL 73					
154230	-2	-0.5	1160	CQ K32K FN21					
154230	-14	-0.8	1792	SV8EJU P25RA R-04					

17m 18,100 000

388FV 3B8FV Az 251 16553 km Tx 1633 Hz Rx 781 Hz

2018 ott 14 15:42:49

JTAlertX 2.10.14 Settings - IK2QJN - [Logging Enabled - HRD V5/V6]

Alerts

- Own Call
- CQ and QRZ
- Wanted Prefix
 - Any Band
 - Wanted CQ Marathon
 - Any Band
 - Wanted US State
 - Any Band
 - Wanted DXCC
 - Any Band
 - Wanted Continent
 - Wanted CQ Zone
 - Wanted Grid
 - Miscellaneous Alerts
 - Alerts Priority
 - Worked B4
 - LoTW / eQSL(AG) Flags
 - Filters
- Logging
- Applications
- Window
- Miscellaneous
- Web Services
- Scan Log and Rebuild
- Sound Card
- Station Callsign
- Program Updates
- About

Enable Wanted DXCC alert

DXCC alerts are available for either individual bands or any band. Click the checkbox for each wanted DXCC entity.

Options

Play Alert when decoded Callsign worked B4

Alert Color: Sample Set Font Color Set Background

Alert Sound: Wave File Path

Volume: 50%

Test Select Default

OK Cancel Save

1400 1600 1800 2000 2200 2400 2600

15:42:30 17m

Spec 30%

17:42 14/10/2018

Band Activity

UTC	dB	DT	Freq	Message	UTC	dB	DT	Freq	Message
154100	-4	-0.5	1162	~ N48JW K32K RRR					
154100	-14	-0.7	1792	~ 5B4AAB P25RA -07					
154100	-18	-0.5	1919	~ YV4DJJ N5LKE EM45					
154115	-17	-0.6	1426	~ EA3HYN VA3HP -18					
154115	-4	-0.4	1698	~ 9G5AR 5B4AAB RM64					
154130	-15	-0.8	889	~ F4FIR K8TL EM89					
154130	-7	-0.5	1161	~ N48JW K32K 73					
154130	-18	-0.5	1919	~ YV4DJJ N5LKE EM45					
154145	-12	-0.2	2401	~ CQ WA3C EN90					
154200	-13	-0.8	889	~ F4FIR K8TL R-01					
154200	-6	-0.5	1160	~ CQ K32K FN21					
154200	-15	-0.7	1792	~ SV8EJU P25RA R-04					
154200	-18	0.1	2508	~ YU1AB K5EJ EM45					
154215	-16	-0.2	2401	~ CQ WA3C EN90					
154230	-14	-0.8	889	~ F4FIR K8TL 73					
154230	-2	-0.5	1160	~ CQ K32K FN21					
154230	-14	-0.8	1792	~ SV8EJU P25RA R-04					

JTAlertX 2.10.14 Settings - IK2QJN - [Logging Enabled - HRD V5/V6]

Alerts

- Own Call
- CQ and QRZ
- Wanted Prefix
 - Any Band
- Wanted CQ Marathon
 - Any Band
- Wanted US State
 - Any Band
- Wanted DXCC
 - Any Band
- Wanted Continent**
 - Any Band
- Wanted CQ Zone
 - Any Band
- Wanted Grid
- Miscellaneous Alerts
 - Alerts Priority
 - Worked B4
 - LoTW / eQSL(AG) Flags
- Filters
- Logging
- Applications
- Window
- Miscellaneous
- Web Services
- Scan Log and Rebuild
- Sound Card
- Station Callsign

Options

Enable Wanted Continent Alert
Continent alerts are available for either individual bands or any band. Click the checkbox for each wanted Continent.

Play Alert when decoded Callsign worked B4

Alert Color

Sample Set Font Color Set Background

Alert Sound

Wave File Path

Volume: 50% Test Select Default

JTAlert by VK3GAMA Help OK Cancel Save

Band Activity

UTC	dB	DT	Freq	Message	UTC	dB	DT	Freq	Message
154115	-4	-0.4	1698	~ 9G5AR 5B4AAB RM64					
154130	-15	-0.8	889	~ F4FIR K8TL EM89					
154130	-7	-0.5	1161	~ N48JW K32K 73					
154130	-18	-0.5	1919	~ YV4DJJ N5LKE EM45					
154145	-12	-0.2	2401	~ CQ WA3C EN90					
154200	-13	-0.8	889	~ F4FIR K8TL R-01					
154200	-6	-0.5	1160	~ CQ K32K FN21					
154200	-15	-0.7	1792	~ SV8EJU P25RA R-04					
154200	-18	0.1	2508	~ YU1AB K5EJ EM45					
154215	-16	-0.2	2401	~ CQ WA3C EN90					
154230	-14	-0.8	889	~ F4FIR K8TL 73					
154230	-2	-0.5	1160	~ CQ K32K FN21					
154230	-14	-0.8	1792	~ SV8EJU P25RA R-04					
154245	-16	-0.7	934	~ W1TP K2RCN RRR					
154245	-21	-0.6	1246	~ LB1LZ R2CDD -17					
154245	-18	-0.4	1306	~ HB9FEB VA3GMT 73					
154245	-14	-0.3	2401	~ IK2VDC WA3C -19					

JTAlertX 2.10.14 Settings - IK2QJN - [Logging Enabled - HRD V5/V6]

Alerts

- Own Call
- CQ and QRZ
- Wanted Prefix
 - Any Band
- Wanted CQ Marathon
 - Any Band
- Wanted US State
 - Any Band
- Wanted DXCC
 - Any Band
- Wanted Continent**
 - Any Band
- Wanted CQ Zone
 - Any Band
- Wanted Grid
- Miscellaneous Alerts
 - Alerts Priority
 - Worked B4
 - LoTW / eQSL(AG) Flags
- Filters
- Logging
- Applications
- Window
- Miscellaneous
- Web Services
- Scan Log and Rebuild
- Sound Card
- Station Callsign

Check All **Any Band** **UnCheck All**

AF - Africa OC - Oceania

AS - Asia NA - North America

EU - Europe SA - South America

AN - Antarctica

6 of 7 Continents Wanted FT8

Tracking

Any Band By Individual Mode (JT9, JT65, FT8)

Band Select

160 80 60 40 30 20 17 15 12 10 6 2

JTAlert by VK3GAMA Help OK Cancel Save

The screenshot shows the WSJT-X v1.9.1 interface with the JTAlertX 2.10.14 Settings dialog box open. The dialog is configured for a "Wanted CQ Zone" alert. The "Alerts" tree on the left has "Wanted CQ Zone" selected. The "Options" section includes a checkbox for "Enable Wanted CQ Zone Alert" which is checked, and another for "Play Alert when decoded Callsign worked B4" which is unchecked. The "Alert Color" section has a "Sample" button. The "Alert Sound" section has a "Wave File Path" field and a volume slider set to 50%.

The background interface shows a band activity table with the following data:

UTC	dB	DT	Freq	Message	UTC	dB	DT	Freq	Message
154115	-4	-0.4	1698	~ 9G5AR 5B4AAB RM64					
154130	-15	-0.8	889	~ F4FIR K8TL EM89					
154130	-7	-0.5	1161	~ N49JW K32K 73					
154130	-18	-0.5	1919	~ YV4DJ N5LKE EM45					
154145	-12	-0.2	2401	~ CQ WA3C EN90					
154200	-13	-0.8	889	~ F4FIR K8TL R-01					
154200	-6	-0.5	1160	~ CQ K32K FN21					
154200	-15	-0.7	1792	~ SV8EUI P25RA R-04					
154200	-18	0.1	2508	~ YU1AB K5EJ EM45					
154215	-16	-0.2	2401	~ CQ WA3C EN90					
154230	-14	-0.8	889	~ F4FIR K8TL 73					
154230	-2	-0.5	1160	~ CQ K32K FN21					
154230	-14	-0.8	1792	~ SV8EUI P25RA R-04					
154245	-16	-0.7	934	~ W1TP K2RCN RRR					
154245	-21	-0.6	1246	~ L2LLK K2CDP -17					
154245	-18	-0.4	1306	~ HB9FF VA3GMT 73					
154245	-14	-0.3	2401	~ IK2VUC WA3C -19					

The main interface also displays a frequency of 18,100,000 Hz and a time of 2018 oct 14 15:43:07.

The screenshot shows the WSJT-X v1.9.1 interface with the JTAlertX 2.10.14 Settings dialog box open. The dialog is configured for a "Wanted Grid" alert. The "Alerts" tree on the left has "Wanted Grid" selected. The "Options" section includes a checkbox for "Enable Wanted Grid Alert" which is checked, and another for "Enable ARRL 2018 Grid Chase" which is checked. The "Alert Color" section has a "Sample" button. The "Alert Sound" section has a "Wave File Path" field and a volume slider set to 50%.

The background interface shows a band activity table with the following data:

UTC	dB	DT	Freq	Message	UTC	dB	DT	Freq	Message
154115	-4	-0.4	1698	~ 9G5AR 5B4AAB RM64					
154130	-15	-0.8	889	~ F4FIR K8TL EM89					
154130	-7	-0.5	1161	~ N49JW K32K 73					
154130	-18	-0.5	1919	~ YV4DJ N5LKE EM45					
154145	-12	-0.2	2401	~ CQ WA3C EN90					
154200	-13	-0.8	889	~ F4FIR K8TL R-01					
154200	-6	-0.5	1160	~ CQ K32K FN21					
154200	-15	-0.7	1792	~ SV8EUI P25RA R-04					
154200	-18	0.1	2508	~ YU1AB K5EJ EM45					
154215	-16	-0.2	2401	~ CQ WA3C EN90					
154230	-14	-0.8	889	~ F4FIR K8TL 73					
154230	-2	-0.5	1160	~ CQ K32K FN21					
154230	-14	-0.8	1792	~ SV8EUI P25RA R-04					
154245	-16	-0.7	934	~ W1TP K2RCN RRR					
154245	-21	-0.6	1246	~ L2LLK K2CDP -17					
154245	-18	-0.4	1306	~ HB9FF VA3GMT 73					
154245	-14	-0.3	2401	~ IK2VUC WA3C -19					

The main interface also displays a frequency of 18,100,000 Hz and a time of 2018 oct 14 15:43:13.

WSJT-X v1.9.1 by K1JT

JTAlertX 2.10.14 Settings - IK2QIN - [Logging Enabled - HRD V5/V6]

Enable Ignored Callsign Alert

A wanted call is the Callsign of the calling station. The station you decoded, not the station being called.

Note: Calls can also be added/removed via a right-click menu on any decoded callsign.

Alert Callsigns

Callsign Add >>

Buttons: Import / Append, Import / Replace, Delete, Clear

CSV import file format is a comma separated list of callsigns. e.g. call1,call2,call3

Options

- Exclude Ignored Callsigns from Decodes History
- Exclude Ignored Callsigns from Hamspots.net spots
- Exclude Ignored Callsigns from Spotcollector spots
- Ignore all Beacon Callsigns (CALLSIGN/B)

Alert Color

Buttons: Sample, Set Font Color, Set Background

Alert Sound

Wave File Path: Clear

Volume: 50% Test Select Default

Buttons: OK, Cancel, Save

WSJT-X v1.9.1 by K1JT

JTAlertX 2.10.14 Settings - IK2QIN - [Logging Enabled - HRD V5/V6]

Enable Wanted Callsign Alert

A wanted call is the Callsign of the calling station. The station you decoded, not the station being called.

Note: Calls can also be added/removed via a right-click menu on any decoded callsign.

Alert Callsigns

Callsign Add >>

Buttons: Import / Append, Import / Replace, Delete, Clear

*** See the help file for important wildcard matching notes ***

Alert Color

Buttons: Sample, Set Font Color, Set Background

Alert Sound

Wave File Path: Clear

Volume: 50% Test Select Default

Buttons: OK, Cancel, Save

WSJT-X v1.9.1 by K1JT

Band Activity

UTC	dB	DT	Freq	Message
154145	-12	-0.2	2401	~ CQ WA3C EN90
154200	-13	-0.8	889	~ F4FIR R8TL R-01
154200	-6	-0.5	1160	~ CQ K3ZK FN21
154200	-15	-0.7	1792	~ SV8EJU P25RA R-04
154200	-18	0.1	2508	~ YU1AB K5BJ EM45
154215	-16	-0.2	2401	~ CQ WA3C EN90
154230	-14	-0.8	889	~ F4FIR R8TL 73
154230	-2	-0.5	1160	~ CQ K3ZK FN21
154230	-14	-0.8	1792	~ SV8EJU P25RA R-04
154245	-16	-0.7	934	~ W17P K2RCN RRR
154245	-21	-0.6	1246	~ L21LL K2CDP -17
154245	-18	-0.4	1306	~ HB9FBP VA3GMT 73
154245	-14	-0.3	2401	~ IK2VUC WA3C -19
154300	-1	-0.5	1159	~ CQ K3ZK FN21
154300	-16	-0.6	1312	~ DC7MA WA3WLH 73
154300	-16	-0.9	2338	~ VA3GMT IIRJF JN45
154315	-16	-0.6	934	~ W17P K2RCN 73

Rx Frequency

UTC	dB	DT	Freq	Message
154145	-12	-0.2	2401	~ CQ WA3C EN90
154200	-13	-0.8	889	~ F4FIR R8TL R-01
154200	-6	-0.5	1160	~ CQ K3ZK FN21
154200	-15	-0.7	1792	~ SV8EJU P25RA R-04
154200	-18	0.1	2508	~ YU1AB K5BJ EM45
154215	-16	-0.2	2401	~ CQ WA3C EN90
154230	-14	-0.8	889	~ F4FIR R8TL 73
154230	-2	-0.5	1160	~ CQ K3ZK FN21
154230	-14	-0.8	1792	~ SV8EJU P25RA R-04
154245	-16	-0.7	934	~ W17P K2RCN RRR
154245	-21	-0.6	1246	~ L21LL K2CDP -17
154245	-18	-0.4	1306	~ HB9FBP VA3GMT 73
154245	-14	-0.3	2401	~ IK2VUC WA3C -19
154300	-1	-0.5	1159	~ CQ K3ZK FN21
154300	-16	-0.6	1312	~ DC7MA WA3WLH 73
154300	-16	-0.9	2338	~ VA3GMT IIRJF JN45
154315	-16	-0.6	934	~ W17P K2RCN 73

JTAlertX 2.10.14 Settings - IK2QJN - [Logging Enabled - HRD V5/V6]

Enable Keywords Alert
Alert on keywords detected in decode free-text messages.

Note: If the keyword is part of a standard exchange it is ignored. Free-text decodes, with or without keywords, are NOT recorded in the Decodes History database.

Alert Keywords

Word: Add >>

Delete Clear

Alert Color

Sample Set Font Color Set Background

Alert Sound

Wave File Path: Clear

Volume: 50% Test Select Default

Miscellaneous Alerts

- Ignored Callsign
- Wanted Callsign
- Decode Keywords
- End of TX/RX Period
- Start of TX Period
- Rx Frequency
- TX Watchdog
- Out of Shack
- User Defined Alert
- No Alert

Alerts Priority

Help OK Cancel Save

WSJT-X v1.9.1 by K1JT

Band Activity

UTC	dB	DT	Freq	Message
154200	-13	-0.8	889	~ F4FIR K8TL R-01
154200	-6	-0.5	1160	~ CQ K3ZK FN21
154200	-15	-0.7	1792	~ SV8EJU P25RA R-04
154200	-18	0.1	2508	~ YU1AB K5BJ EM45
154215	-16	-0.2	2401	~ CQ WA3C EN90
154230	-14	-0.8	889	~ F4FIR R8TL 73
154230	-2	-0.5	1160	~ CQ K3ZK FN21
154230	-14	-0.8	1792	~ SV8EJU P25RA R-04
154245	-16	-0.7	934	~ W17P K2RCN RRR
154245	-21	-0.6	1246	~ L21LL K2CDP -17
154245	-18	-0.4	1306	~ HB9FBP VA3GMT 73
154245	-14	-0.3	2401	~ IK2VUC WA3C -19
154300	-1	-0.5	1159	~ CQ K3ZK FN21
154300	-16	-0.6	1312	~ DC7MA WA3WLH 73
154300	-16	-0.9	2338	~ VA3GMT IIRJF JN45
154315	-16	-0.6	934	~ W17P K2RCN 73
154315	-15	-0.2	2401	~ IK2VUC WA3C RRR

Rx Frequency

UTC	dB	DT	Freq	Message
154200	-13	-0.8	889	~ F4FIR K8TL R-01
154200	-6	-0.5	1160	~ CQ K3ZK FN21
154200	-15	-0.7	1792	~ SV8EJU P25RA R-04
154200	-18	0.1	2508	~ YU1AB K5BJ EM45
154215	-16	-0.2	2401	~ CQ WA3C EN90
154230	-14	-0.8	889	~ F4FIR R8TL 73
154230	-2	-0.5	1160	~ CQ K3ZK FN21
154230	-14	-0.8	1792	~ SV8EJU P25RA R-04
154245	-16	-0.7	934	~ W17P K2RCN RRR
154245	-21	-0.6	1246	~ L21LL K2CDP -17
154245	-18	-0.4	1306	~ HB9FBP VA3GMT 73
154245	-14	-0.3	2401	~ IK2VUC WA3C -19
154300	-1	-0.5	1159	~ CQ K3ZK FN21
154300	-16	-0.6	1312	~ DC7MA WA3WLH 73
154300	-16	-0.9	2338	~ VA3GMT IIRJF JN45
154315	-16	-0.6	934	~ W17P K2RCN 73
154315	-15	-0.2	2401	~ IK2VUC WA3C RRR

JTAlertX 2.10.14 Settings - IK2QJN - [Logging Enabled - HRD V5/V6]

Enable End of TX/RX Period Alert
This Alert is generated at the end of the current TX or RX period. The 48 seconds tick of the current minute.

Options

Alert only when WSJT-X TX is enabled.

Alert Sound

Wave File Path: Clear

Volume: 50% Test Select Default

Help OK Cancel Save

WSJT-X v1.9.1 by K1JT

Band Activity

UTC	dB	DT	Freq	Message
154200	-13	-0.8	889	~ F4FIR K8TL R-01
154200	-6	-0.5	1160	~ CQ K3ZR FN21
154200	-15	-0.7	1792	~ SV8EIU P25RA R-04
154200	-18	0.1	2508	~ YU1AB K5EJ EM45
154215	-16	-0.2	2401	~ CQ WA3C FN50
154230	-14	-0.8	889	~ F4FIR K8TL 73
154230	-2	-0.5	1160	~ CQ K3ZR FN21
154230	-14	-0.8	1792	~ SV8EIU P25RA R-04
154245	-16	-0.7	934	~ W17P K2RCN RRR
154245	-21	-0.6	1246	~ L21LL K2CDP -17
154245	-18	-0.4	1306	~ HB9FBP VA3GMT 73
154245	-14	-0.3	2401	~ IK2VUC WA3C -19
154300	-1	-0.5	1159	~ CQ K3ZR FN21
154300	-16	-0.6	1312	~ DC7MA WA3WLH 73
154300	-16	-0.9	2330	~ VA3GMT IIRJF JN45
154315	-16	-0.6	934	~ W17P K2RCN 73
154315	-15	-0.2	2401	~ IK2VUC WA3C RRR

Rx Frequency

UTC	dB	DT	Freq	Message
154200	-13	-0.8	889	~ F4FIR K8TL R-01
154200	-6	-0.5	1160	~ CQ K3ZR FN21
154200	-15	-0.7	1792	~ SV8EIU P25RA R-04
154200	-18	0.1	2508	~ YU1AB K5EJ EM45
154215	-16	-0.2	2401	~ CQ WA3C FN50
154230	-14	-0.8	889	~ F4FIR K8TL 73
154230	-2	-0.5	1160	~ CQ K3ZR FN21
154230	-14	-0.8	1792	~ SV8EIU P25RA R-04
154245	-16	-0.7	934	~ W17P K2RCN RRR
154245	-21	-0.6	1246	~ L21LL K2CDP -17
154245	-18	-0.4	1306	~ HB9FBP VA3GMT 73
154245	-14	-0.3	2401	~ IK2VUC WA3C -19
154300	-1	-0.5	1159	~ CQ K3ZR FN21
154300	-16	-0.6	1312	~ DC7MA WA3WLH 73
154300	-16	-0.9	2330	~ VA3GMT IIRJF JN45
154315	-16	-0.6	934	~ W17P K2RCN 73
154315	-15	-0.2	2401	~ IK2VUC WA3C RRR

JTAlertX 2.10.14 Settings - IK2QJN - [Logging Enabled - HRD V5/V6]

Enable Start of TX Period Alert

This Alert is generated at the start of the WSJT-X TX period, that is, when WSJT-X first starts transmitting. This is only available when running WSJT-X 1.6 or later and when the UDP options are enabled.

Alert Sound

Wave File Path:

Volume: 50%

Buttons: Test, Select, Default

WSJT-X v1.9.1 by K1JT

Band Activity

UTC	dB	DT	Freq	Message
154200	-13	-0.8	889	~ F4FIR K8TL R-01
154200	-6	-0.5	1160	~ CQ K3ZR FN21
154200	-15	-0.7	1792	~ SV8EIU P25RA R-04
154200	-18	0.1	2508	~ YU1AB K5EJ EM45
154215	-16	-0.2	2401	~ CQ WA3C FN50
154230	-14	-0.8	889	~ F4FIR K8TL 73
154230	-2	-0.5	1160	~ CQ K3ZR FN21
154230	-14	-0.8	1792	~ SV8EIU P25RA R-04
154245	-16	-0.7	934	~ W17P K2RCN RRR
154245	-21	-0.6	1246	~ L21LL K2CDP -17
154245	-18	-0.4	1306	~ HB9FBP VA3GMT 73
154245	-14	-0.3	2401	~ IK2VUC WA3C -19
154300	-1	-0.5	1159	~ CQ K3ZR FN21
154300	-16	-0.6	1312	~ DC7MA WA3WLH 73
154300	-16	-0.9	2330	~ VA3GMT IIRJF JN45
154315	-16	-0.6	934	~ W17P K2RCN 73
154315	-15	-0.2	2401	~ IK2VUC WA3C RRR

Rx Frequency

UTC	dB	DT	Freq	Message
154200	-13	-0.8	889	~ F4FIR K8TL R-01
154200	-6	-0.5	1160	~ CQ K3ZR FN21
154200	-15	-0.7	1792	~ SV8EIU P25RA R-04
154200	-18	0.1	2508	~ YU1AB K5EJ EM45
154215	-16	-0.2	2401	~ CQ WA3C FN50
154230	-14	-0.8	889	~ F4FIR K8TL 73
154230	-2	-0.5	1160	~ CQ K3ZR FN21
154230	-14	-0.8	1792	~ SV8EIU P25RA R-04
154245	-16	-0.7	934	~ W17P K2RCN RRR
154245	-21	-0.6	1246	~ L21LL K2CDP -17
154245	-18	-0.4	1306	~ HB9FBP VA3GMT 73
154245	-14	-0.3	2401	~ IK2VUC WA3C -19
154300	-1	-0.5	1159	~ CQ K3ZR FN21
154300	-16	-0.6	1312	~ DC7MA WA3WLH 73
154300	-16	-0.9	2330	~ VA3GMT IIRJF JN45
154315	-16	-0.6	934	~ W17P K2RCN 73
154315	-15	-0.2	2401	~ IK2VUC WA3C RRR

JTAlertX 2.10.14 Settings - IK2QJN - [Logging Enabled - HRD V5/V6]

Enable Rx Frequency Audio Alert

Generates an audio only alert when a decode is detected at your current RX frequency (+ the range frequency) and the decode doesn't generate any of the other enabled alerts (typically a free-text decode).

Note: This is only available when running WSJT-X 1.7 or later.

Frequency Range

+ 50Hz Range either side of current Rx DF to monitor

Alert Sound

Wave File Path:

Volume: 50%

Buttons: Test, Select, Default

WSJT-X v1.9.1 by K1JT

File Configurations View Mode Decode Save Tools Help

Band Activity				Rx Frequency					
UTC	dB	DT	Freq	Message	UTC	dB	DT	Freq	Message
154200	-13	-0.8	889	F4FIR K8TL R-01					
154200	-6	-0.5	1160	CQ K3ZR FN21					
154200	-15	-0.7	1792	SV8EIU P25RA R-04					
154200	-18	0.1	2508	YU1AB K5BJ EN45					
154215	-16	-0.2	2401	CQ WA3C EN90					
154230	-14	-0.8	889	F4FIR K8TL 73					
154230	-2	-0.5	1160	CQ K3ZR FN21					
154230	-14	-0.8	1792	SV8EIU P25RA R-04					
154245	-16	-0.7	934	W17P K2RCN RRR					
154245	-21	-0.6	1246	L211L K2CDP -17					
154245	-18	-0.4	1306	HB9FBP VA3GMT 73					
154245	-14	-0.3	2401	IK2VUC WA3C -19					
154300	-1	-0.5	1159	CQ K3ZR FN21					
154300	-16	-0.6	1312	DC7MA WA3WLH 73					
154300	-16	-0.9	2338	VA3GMT I1RJP JN45					
154315	-16	-0.6	934	W17P K2RCN 73					
154315	-15	-0.2	2401	IK2VUC WA3C RRR					

17m **18,100 000** Tx even/1st

DX Call: 388FV DX Grid: Tx 1633 Hz Rx 781 Hz

Az 251 16553 km Report -15

2018 ott 14 15:43:42

Receiving FT8

JTAlertX 2.10.14 Settings - IK2QJN - [Logging Enabled - HRD V5/V6]

Enable TX Watchdog Triggered Alert

This Alert is generated when the WSJT-X Runaway TX Watchdog is triggered. This is only available when running WSJT-X 1.7 or later and when the UDP options are enabled.

Alert Sound: Wave File Path

Volume: 50%

Buttons: OK Cancel Save

WSJT-X v1.9.1 by K1JT

File Configurations View Mode Decode Save Tools Help

Band Activity				Rx Frequency					
UTC	dB	DT	Freq	Message	UTC	dB	DT	Freq	Message
154215	-16	-0.2	2401	CQ WA3C EN90					
154230	-14	-0.8	889	F4FIR K8TL 73					
154230	-2	-0.5	1160	CQ K3ZR FN21					
154230	-14	-0.8	1792	SV8EIU P25RA R-04					
154245	-16	-0.7	934	W17P K2RCN RRR					
154245	-21	-0.6	1246	L211L K2CDP -17					
154245	-18	-0.4	1306	HB9FBP VA3GMT 73					
154245	-14	-0.3	2401	IK2VUC WA3C -19					
154300	-1	-0.5	1159	CQ K3ZR FN21					
154300	-16	-0.6	1312	DC7MA WA3WLH 73					
154300	-16	-0.9	2338	VA3GMT I1RJP JN45					
154315	-16	-0.6	934	W17P K2RCN 73					
154315	-15	-0.2	2401	IK2VUC WA3C RRR					
154330	-2	-0.5	1159	CQ K3ZR FN21					
154330	-14	-0.5	1792	SV8EIU P25RA R-12					
154330	-18	-0.6	1918	DL5JMY N5LTK RRR					
154330	-17	-0.2	2338	VA3GMT I1RJP JN45					

17m **18,100 000** Tx even/1st

DX Call: 388FV DX Grid: Tx 1633 Hz Rx 781 Hz

Az 251 16553 km Report -15

2018 ott 14 15:43:46

Receiving FT8

JTAlertX 2.10.14 Settings - IK2QJN - [Logging Enabled - HRD V5/V6]

Enable Out of Shack Alert

Will override all other alert sounds when triggered.

Alert Triggers

- Any new decodes
- Any new distance decodes (1000 km)
- Only when these Alerts are triggered

Obey Alert Filters Ignore B4 decodes

Alert Repeat: 3 Number of times to repeat audio alert

Alert Sound: Wave File Path

Volume: 100%

Buttons: OK Cancel Save

WSJT-X v1.9.1 by K1JT

Band Activity

UTC	dB	DT	Freq	Message
155115	-5	-0.3	1739	EASEN 5B4AAB -01
155115	-16	-0.2	2401	ON3DNG WA3C EN90
155115	-18	-0.9	2462	I7UNU I1RJF JN45
155145	-17	-0.6	348	IK4OMO H18PLE -11
155145	-8	-0.6	922	F8DYD K3WV -12
155145	-15	-0.5	1000	LA4EI N51KE 73
155145	-18	-0.3	1307	OE6BMG VA3GMT R-08
155145	-13	-0.6	1483	F84WBS I24REF JN54
155145	-1	-0.5	1739	EASEN 5B4AAB -01
155145	-17	-0.2	2401	ON3DNG WA3C R+01
155145	-17	-0.9	2462	I7UNU I1RJF JN45
155215	-13	-0.6	400	V47JA I1K00ZD -03
155215	-10	-0.6	922	F8DYD K3WV -12
155215	-14	0.1	1483	F84WBS I24REF JN54
155215	2	-0.5	1739	EASEN 5B4AAB -01
155215	-14	-0.2	2401	ON3DNG WA3C 73
155215	-17	-0.9	2462	I7UNU I1RJF JN45

Rx Frequency

18,100,000

388FV

2018 ott 14 15:52:34

JTAlertX 2.10.14 Settings - IK2QJN - [Logging Enabled - HRD V5/V6]

Wanted US State

Wanted DXCC

Wanted Continent

Wanted CQ Zone

Wanted Grid

Miscellaneous Alerts

Ignored Callsign

Wanted Callsign

Decode Keywords

End of TX/RX Period

Start of TX Period

Rx Frequency

TX Watchdog

Out of Shack

User Defined Alert

Alerts Priority

Worked B4

LoTW / eQSL(AG) Flags

Filters

Logging

Last QSO API

Log B4 Database

Standard ADIF File

DXLab DXKeeper

HRD V5/V6

Log4OM

AC1nn

Enable User Defined Alert

Execute a user defined file in response to enabled alert conditions. See the help file for instructions.

Alert Triggers

Wanted Callsign

Wanted US State

Wanted DXCC

Wanted Continent

Wanted CQ Zone

Wanted Prefix

Wanted Grid

Wanted Continent

Wanted CQ Marathon

Obey Alert Filters

Alert Repeat

Repeat Interval (minutes)

Ignore Callsign of Alert Trigger

Alert Application

Application Path

Parameters

15

OK

Cancel

Save

WSJT-X v1.9.1 by K1JT

Band Activity

UTC	dB	DT	Freq	Message
155115	-5	-0.3	1739	EASEN 5B4AAB -01
155115	-16	-0.2	2401	ON3DNG WA3C EN90
155115	-18	-0.9	2462	I7UNU I1RJF JN45
155145	-17	-0.6	348	IK4OMO H18PLE -11
155145	-8	-0.6	922	F8DYD K3WV -12
155145	-15	-0.5	1000	LA4EI N51KE 73
155145	-18	-0.3	1307	OE6BMG VA3GMT R-08
155145	-13	-0.6	1483	F84WBS I24REF JN54
155145	-1	-0.5	1739	EASEN 5B4AAB -01
155145	-17	-0.2	2401	ON3DNG WA3C R+01
155145	-17	-0.9	2462	I7UNU I1RJF JN45
155215	-13	-0.6	400	V47JA I1K00ZD -03
155215	-10	-0.6	922	F8DYD K3WV -12
155215	-14	0.1	1483	F84WBS I24REF JN54
155215	2	-0.5	1739	EASEN 5B4AAB -01
155215	-14	-0.2	2401	ON3DNG WA3C 73
155215	-17	-0.9	2462	I7UNU I1RJF JN45

Rx Frequency

18,100,000

388FV

2018 ott 14 15:52:40

JTAlertX 2.10.14 Settings - IK2QJN - [Logging Enabled - HRD V5/V6]

Wanted US State

Wanted DXCC

Wanted Continent

Wanted CQ Zone

Wanted Grid

Miscellaneous Alerts

Ignored Callsign

Wanted Callsign

Decode Keywords

End of TX/RX Period

Start of TX Period

Rx Frequency

TX Watchdog

Out of Shack

User Defined Alert

Alerts Priority

Worked B4

LoTW / eQSL(AG) Flags

Filters

Logging

Last QSO API

Log B4 Database

Standard ADIF File

DXLab DXKeeper

HRD V5/V6

Log4OM

AC1nn

Enable User Defined Alert

Execute a user defined file in response to enabled alert conditions. See the help file for instructions.

Alert Triggers

Wanted Callsign

Wanted US State

Wanted DXCC

Wanted Continent

Wanted CQ Zone

Wanted Prefix

Wanted Grid

Wanted Continent

Wanted CQ Marathon

Obey Alert Filters

Alert Repeat

Repeat Interval (minutes)

Ignore Callsign of Alert Trigger

Alert Application

Application Path

Parameters

15

OK

Cancel

Save

Band Activity

UTC	dB	DT	Freq	Message
155115	-5	-0.3	1739	EASEN 5B4AAB -01
155115	-16	-0.2	2401	ON3DNG WA3C EN90
155115	-18	-0.9	2462	I70NU I1RJF JN45
155145	-17	-0.6	348	IK4OMO H18PLE -11
155145	-8	-0.6	922	F8DYD K3WV -12
155145	-15	-0.5	1000	LA4EI N51KE 73
155145	-18	-0.3	1307	O6EBMG VA3GMT R-08
155145	-13	-0.6	1483	F84WBS I24REF JN54
155145	-1	-0.5	1739	EASEN 5B4AAB -01
155145	-17	-0.2	2401	ON3DNG WA3C R+01
155145	-17	-0.9	2462	I70NU I1RJF JN45
155215	-13	-0.6	400	V47JA IK0OZD -03
155215	-10	-0.6	922	F8DYD K3WV -12
155215	-14	0.1	1483	F84WBS I24REF JN54
155215	2	-0.5	1739	EASEN 5B4AAB -01
155215	-14	-0.2	2401	ON3DNG WA3C 73
155215	-17	-0.9	2462	I70NU I1RJF JN45

JtAlertX 2.10.14 Settings - IK2QJN - [Logging Enabled - HRD V5/V6]

- Wanted US State
- Wanted DXCC
- Wanted Continent
- Wanted CQ Zone
- Wanted Grid
- Miscellaneous Alerts
 - Ignored Callsign
 - Wanted Callsign
 - Decode Keywords
 - End of TX/RX Period
 - Start of TX Period
 - Rx Frequency
 - TX Watchdog
 - Out of Shack
 - User Defined Alert
 - No Alert
- Alerts Priority
 - Worked B4
 - LoTW / eQSL(AG) Flags
 - Filters
 - Logging
 - Last QSO API
 - Log B4 Database
 - Standard ADIF File
 - DXLab DXKeeper
 - HRD V5/V6
 - Log4OM
 - ACLog

Alerts Priority

- Wanted DXCC
- Wanted US State
- Wanted Continent
- Wanted CQ Zone
- Wanted Grid
- Wanted Prefix
- Wanted Callsign
- CQ and QRZ
- Decode Keywords
- Rx Frequency

Display and Audio Priority

- Top
- Up
- Down
- Bottom
- Default

Play High Priority Sounds First

Band Activity

UTC	dB	DT	Freq	Message
155115	-5	-0.3	1739	EASEN 5B4AAB -01
155115	-16	-0.2	2401	ON3DNG WA3C EN90
155115	-18	-0.9	2462	I70NU I1RJF JN45
155145	-17	-0.6	348	IK4OMO H18PLE -11
155145	-8	-0.6	922	F8DYD K3WV -12
155145	-15	-0.5	1000	LA4EI N51KE 73
155145	-18	-0.3	1307	O6EBMG VA3GMT R-08
155145	-13	-0.6	1483	F84WBS I24REF JN54
155145	-1	-0.5	1739	EASEN 5B4AAB -01
155145	-17	-0.2	2401	ON3DNG WA3C R+01
155145	-17	-0.9	2462	I70NU I1RJF JN45
155215	-13	-0.6	400	V47JA IK0OZD -03
155215	-10	-0.6	922	F8DYD K3WV -12
155215	-14	0.1	1483	F84WBS I24REF JN54
155215	2	-0.5	1739	EASEN 5B4AAB -01
155215	-14	-0.2	2401	ON3DNG WA3C 73
155215	-17	-0.9	2462	I70NU I1RJF JN45

JtAlertX 2.10.14 Settings - IK2QJN - [Logging Enabled - HRD V5/V6]

Background and font color of a decoded callsign that has been worked before on the current band. "B4" will also be displayed to the right of the decoded callsign.

Note: If the QRG is not set in WSJT-X, and if the decoded Callsign previously worked, regardless of band, it will be flagged as worked B4.

Options

- Remove spaces from "Callsign - B4" hyphen separator
- Ignore B4 status before this date
- 2018-10-14
- Ignore Band
- Ignore Mode

Alert Color

Sample Set Font Color Set Background

Band Activity

UTC	dB	DT	Freq	Message
155115	-5	-0.3	1739	EA5EN 5B4AAB -01
155115	-16	-0.2	2401	ON3DNG WA3C EN90
155115	-18	-0.9	2462	I70NU I1RJF JN45
155145	-17	-0.6	348	IK4OMO H18PLE -11
155145	-8	-0.6	922	F8DYD K3WV -12
155145	-15	-0.5	1000	LA4EI N5LKE 73
155145	-18	-0.3	1307	OE6BMG VA3GMT R-08
155145	-13	-0.6	1483	F84WBS I24REF JN54
155145	-1	-0.5	1739	EA5EN 5B4AAB -01
155145	-17	-0.2	2401	ON3DNG WA3C R+01
155145	-17	-0.9	2462	I70NU I1RJF JN45
155215	-13	-0.6	400	V47JA IK00ZD -03
155215	-10	-0.6	922	F8DYD K3WV -12
155215	-14	0.1	1483	F84WBS I24REF JN54
155215	2	-0.5	1739	EA5EN 5B4AAB -01
155215	-14	-0.2	2401	ON3DNG WA3C 73
155215	-17	-0.9	2462	I70NU I1RJF JN45

Rx Frequency

UTC	dB	DT	Freq	Message
155115	-5	-0.3	1739	EA5EN 5B4AAB -01
155115	-16	-0.2	2401	ON3DNG WA3C EN90
155115	-18	-0.9	2462	I70NU I1RJF JN45
155145	-17	-0.6	348	IK4OMO H18PLE -11
155145	-8	-0.6	922	F8DYD K3WV -12
155145	-15	-0.5	1000	LA4EI N5LKE 73
155145	-18	-0.3	1307	OE6BMG VA3GMT R-08
155145	-13	-0.6	1483	F84WBS I24REF JN54
155145	-1	-0.5	1739	EA5EN 5B4AAB -01
155145	-17	-0.2	2401	ON3DNG WA3C R+01
155145	-17	-0.9	2462	I70NU I1RJF JN45
155215	-13	-0.6	400	V47JA IK00ZD -03
155215	-10	-0.6	922	F8DYD K3WV -12
155215	-14	0.1	1483	F84WBS I24REF JN54
155215	2	-0.5	1739	EA5EN 5B4AAB -01
155215	-14	-0.2	2401	ON3DNG WA3C 73
155215	-17	-0.9	2462	I70NU I1RJF JN45

JTAlertX 2.10.14 Settings - IK2QJN - [Logging Enabled - HRD V5/V6]

- Wanted US State
- Wanted DXCC
- Wanted Continent
- Wanted CQ Zone
- Wanted Grid
- Miscellaneous Alerts
 - Ignored Callsign
 - Wanted Callsign
 - Decode Keywords
 - End of TX/RX Period
 - Start of TX Period
 - Rx Frequency
 - TX Watchdog
 - Out of Shack
 - User Defined Alert
 - No Alert
 - Alerts Priority
 - Worked B4
 - LoTW / eQSL(AG) Flags
- Filters
- Logging
 - Last QSO API
 - Log B4 Database
 - Standard ADIF File
 - DXLab DXKeeper
 - HRD V5/V6
 - Log4OM
 - ACLog

Decoded Callsign stripes and flags, indicating LoTW and eQSL(AG) membership, require the HamApps Callsign Database. See the "Program Updates" settings page to install or update this database.

Callsign stripes and flags are painted at each end of a decoded callsign slot. LoTW on the left and eQSL(AG) on the right. The stripe and flag color matches the alert font color of the displayed callsign.

LoTW Last Upload Filtering

Enable time limit filter

2 Years Years since last upload. Stations that have not uploaded to LoTW in this time period will not have their callsigns flagged as an LoTW member.

Enable Membership Indicators

Enable LoTW Stripe/Flag Enable eQSL(AG) Stripe/Flag

Use Stripes Use Flags

LoTW Position: Top Left

eQSL(AG) Position: Bottom Right

Band Activity

UTC	dB	DT	Freq	Message
155115	-5	-0.3	1739	EA5EN 5B4AAB -01
155115	-16	-0.2	2401	ON3DNG WA3C EN90
155115	-18	-0.9	2462	I70NU I1RJF JN45
155145	-17	-0.6	348	IK4OMO H18PLE -11
155145	-8	-0.6	922	F8DYD K3WV -12
155145	-15	-0.5	1000	LA4EI N5LKE 73
155145	-18	-0.3	1307	OE6BMG VA3GMT R-08
155145	-13	-0.6	1483	F84WBS I24REF JN54
155145	-1	-0.5	1739	EA5EN 5B4AAB -01
155145	-17	-0.2	2401	ON3DNG WA3C R+01
155145	-17	-0.9	2462	I70NU I1RJF JN45
155215	-13	-0.6	400	V47JA IK00ZD -03
155215	-10	-0.6	922	F8DYD K3WV -12
155215	-14	0.1	1483	F84WBS I24REF JN54
155215	2	-0.5	1739	EA5EN 5B4AAB -01
155215	-14	-0.2	2401	ON3DNG WA3C 73
155215	-17	-0.9	2462	I70NU I1RJF JN45

Rx Frequency

UTC	dB	DT	Freq	Message
155115	-5	-0.3	1739	EA5EN 5B4AAB -01
155115	-16	-0.2	2401	ON3DNG WA3C EN90
155115	-18	-0.9	2462	I70NU I1RJF JN45
155145	-17	-0.6	348	IK4OMO H18PLE -11
155145	-8	-0.6	922	F8DYD K3WV -12
155145	-15	-0.5	1000	LA4EI N5LKE 73
155145	-18	-0.3	1307	OE6BMG VA3GMT R-08
155145	-13	-0.6	1483	F84WBS I24REF JN54
155145	-1	-0.5	1739	EA5EN 5B4AAB -01
155145	-17	-0.2	2401	ON3DNG WA3C R+01
155145	-17	-0.9	2462	I70NU I1RJF JN45
155215	-13	-0.6	400	V47JA IK00ZD -03
155215	-10	-0.6	922	F8DYD K3WV -12
155215	-14	0.1	1483	F84WBS I24REF JN54
155215	2	-0.5	1739	EA5EN 5B4AAB -01
155215	-14	-0.2	2401	ON3DNG WA3C 73
155215	-17	-0.9	2462	I70NU I1RJF JN45

JTAlertX 2.10.14 Settings - IK2QJN - [Logging Enabled - HRD V5/V6]

- Wanted US State
- Wanted DXCC
- Wanted Continent
- Wanted CQ Zone
- Wanted Grid
- Miscellaneous Alerts
 - Ignored Callsign
 - Wanted Callsign
 - Decode Keywords
 - End of TX/RX Period
 - Start of TX Period
 - Rx Frequency
 - TX Watchdog
 - Out of Shack
 - User Defined Alert
 - No Alert
 - Alerts Priority
 - Worked B4
 - LoTW / eQSL(AG) Flags
- Filters
- Logging
 - Last QSO API
 - Log B4 Database
 - Standard ADIF File
 - DXLab DXKeeper
 - HRD V5/V6
 - Log4OM
 - ACLog

All Decodes Options

Generate alerts for CQ only Callsigns

Show only Callsigns generating alerts

Do not show Worked Before (B4) Callsigns

Do not show Ignored Callsigns

QSL Membership Options

No QSL Filters, pass all Alerts

LoTW member

eQSL(AG) member

LoTW OR eQSL(AG) member

LoTW AND eQSL(AG) member

WSJT-X v1.9.1 by K1JT

File Configurations View Mode Decode Save Tools Help

Band Activity				Rx Frequency					
UTC	dB	DT	Freq	Message	UTC	dB	DT	Freq	Message
155115	-5	-0.3	1739	EA5EN 5B4AAB -01					
155115	-16	-0.2	2401	ON3DWG WA3C EN90					
155115	-18	-0.9	2462	I7UNU I1RJF JN45					
155145	-17	-0.6	348	IK4QMO H18PLE -11					
155145	-8	-0.6	922	F8DYD K3WW -12					
155145	-15	-0.5	1000	LA4ET N5LKE 73					
155145	-18	-0.3	1307	OE6BMG VA3GMT R-08					
155145	-13	-0.6	1483	F84WBS I24REF JN54					
155145	-1	-0.5	1739	EA5EN 5B4AAB -01					
155145	-17	-0.2	2401	ON3DWG WA3C R+01					
155145	-17	-0.9	2462	I7UNU I1RJF JN45					
155215	-13	-0.6	400	V47JA IK0OZD -03					
155215	-10	-0.6	922	F8DYD K3WW -12					
155215	-14	0.1	1483	F84WBS I24REF JN54					
155215	-2	-0.5	1739	EA5EN 5B4AAB -01					
155215	-14	-0.2	2401	ON3DWG WA3C 73					
155215	-17	-0.9	2462	I7UNU I1RJF JN45					

17m 18,100 000 Tx even/1st

388FV 3B8FV Tx 1633 Hz Rx 781 Hz

Az 251 16553 km Report -15

2018 ott 14 15:52:56

Receiving FT8

388FV 1530 Mauritius 39 53 AF Q

JT65 Band: 160 80 60 40 30 20 17 15 12 10 6 2 # : FT8 Band: 160 80 60 40 30 20 17 15 12 10 6 2 # : Wrk
 Callsign: 0 : Callsign: 0 : Cfm

1752 14/10/2018

JTAlertX 2.10.14 Settings - IK2QJN - [Logging Enabled - HRD V5/V6]

Logging Enabled - HRD V5/V6

Confirmed / Worked Bands Display
 Confirmation Card eQSL LoTW

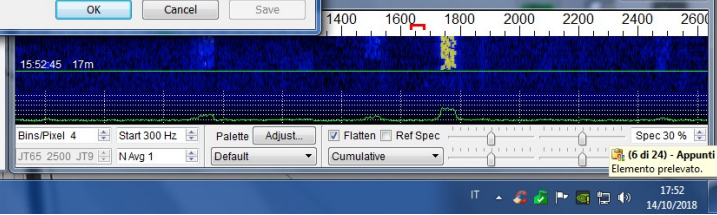
Logged Frequency
 QRG only QRG + DF (true RF)

Logging Options
 Log without submode [Mode = JT65A or JT9-1]
 Log full name returned from XML lookups
 Log full QTH returned from XML lookups
 Log propagation data, SFI, A-index and K-Index
 Mark QSO upload to LoTW as "Requested"
 Mark QSO upload to eQSL as "Requested"
 Remember QSL Request setting across logging and restarts
 Restore Comments from last JTAlert session
 Don't log value in JTAlert Time field
 Log WSJT-X Comments to QSL Message field
 Log Address returned from an XML or previous QSO lookup

HRD V5/V6
 Log4OM
 ACLog

JTAlert by VK3AMA

Help OK Cancel Save



WSJT-X v1.9.1 by K1JT

File Configurations View Mode Decode Save Tools Help

Band Activity				Rx Frequency					
UTC	dB	DT	Freq	Message	UTC	dB	DT	Freq	Message
155145	-8	-0.6	922	F8DYD K3WW -12					
155145	-15	-0.5	1000	LA4ET N5LKE 73					
155145	-18	-0.3	1307	OE6BMG VA3GMT R-08					
155145	-13	-0.6	1483	F84WBS I24REF JN54					
155145	-1	-0.5	1739	EA5EN 5B4AAB -01					
155145	-17	-0.2	2401	ON3DWG WA3C R+01					
155145	-17	-0.9	2462	I7UNU I1RJF JN45					
155215	-13	-0.6	400	V47JA IK0OZD -03					
155215	-10	-0.6	922	F8DYD K3WW -12					
155215	-14	0.1	1483	F84WBS I24REF JN54					
155215	2	-0.5	1739	EA5EN 5B4AAB -01					
155215	-14	-0.2	2401	ON3DWG WA3C 73					
155215	-17	-0.9	2462	I7UNU I1RJF JN45					
155245	-8	-0.6	922	F8DYD K3WW -12					
155245	-12	1.1	1483	F84WBS I24REF JN54					
155245	5	-0.3	1739	EA5EN 5B4AAB RR73					
155245	-18	-0.9	2462	I7UNU I1RJF JN45					

17m 18,100 000 Tx even/1st

388FV 3B8FV Tx 1633 Hz Rx 781 Hz

Az 251 16553 km Report -15

2018 ott 14 15:53:05

Receiving FT8

388FV 1530 Mauritius 39 53 AF Q

JT65 Band: 160 80 60 40 30 20 17 15 12 10 6 2 # : FT8 Band: 160 80 60 40 30 20 17 15 12 10 6 2 # : Wrk
 Callsign: 0 : Callsign: 0 : Cfm

1753 14/10/2018

JTAlertX 2.10.14 Settings - IK2QJN - [Logging Enabled - HRD V5/V6]

Enable HRD V5/V6 Logging

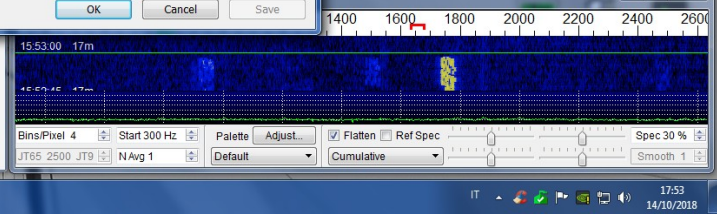
HRD Version
 Version 6.3 or later Version 5 or pre 6.3

Version 6.3 or later
 Log Name: [] PC IPv4 Address: 127.0.0.1
 Log Description: []
 Log DSN Name: []
 Log Username: [] Log Password: []
 ODBC Driver: []
 ODBC Description: []

Version 5 or pre 6.3
 This is a Version 5 Log
 DSN Name: HRD My Logbook - Access
 ODBC Driver: Microsoft Access Driver (*.mdb)
 ODBC Description: Default HRD Logbook using a Microsoft Access database

JTAlert by VK3AMA

Help OK Cancel Save



WSJT-X v1.9.1 by K1JT

Band Activity

UTC	dB	DT	Freq	Message	UTC	dB	DT	Freq	Message
155145	-18	-0.3	1307	~	0E6BMS	VA3GMT	R-08		
155145	-13	-0.6	1483	~	F94WBS	I24REF	JN54		
155145	-1	-0.5	1739	~	EA5EN	5B4AAB	-01		
155145	-17	-0.2	2401	~	ON3DNG	WA3C	R+01		
155145	-17	-0.9	2462	~	I70NU	I1RJF	JN45		
155215	-13	-0.6	400	~	V47JA	IK0OZD	-03		
155215	-10	-0.6	922	~	F8DYD	K3WV	-12		
155215	-14	0.1	1483	~	F94WBS	I24REF	JN54		
155215	2	-0.5	1739	~	EA5EN	5B4AAB	-01		
155215	-14	-0.2	2401	~	ON3DNG	WA3C	73		
155215	-17	-0.9	2462	~	I70NU	I1RJF	JN45		
155245	-8	-0.6	922	~	F8DYD	K3WV	-12		
155245	-12	1.1	1483	~	F94WBS	I24REF	JN54		
155245	5	-0.3	1739	~	EA5EN	5B4AAB	RR73		
155245	-18	-0.9	2462	~	I70NU	I1RJF	JN45		
155300	-21	0.2	762	~	KJ3L	I22BNY	RRR		
155300	-20	-0.3	2054	~	DB1BO	HR5NLJ	FJ34		

Rx Frequency

17m **18,100 000** Tx even/1st

388FV 3B8FV Az 251 16553 km Tx 1633 Hz Rx 781 Hz

2018 oct 14 15:53:23

JTAlertX 2.10.14 Settings - IK2QIN - [Logging Enabled - HRD V5/V6]

- Start C:\WSJT\wsjtx\bin\wsjtx.exe
- Close 1500 Delay ms Parameters Clear
- Start
- Close 1000 Delay ms Parameters Clear
- Start
- Close 1000 Delay ms Parameters Clear
- Start
- Close 1000 Delay ms Parameters Clear
- Start
- Close 1000 Delay ms Parameters Clear
- Start
- Close 1000 Delay ms Parameters Clear

Logging

- Last QSO API
- Log B4 Database
- Standard ADIF File
- DXLab DXKeeper
- HRD V5/V6
- Log4OM
- AClOG
- MxW (CSV File)

Applications

- Auto-Start
- WSJT-X
- DXLab Suite

Window

- Macros (Free-Text)
- Decodes History
- Callsign QSO History
- Band Activity Display
- Pnwn.Windows

WSJT-X v1.9.1 by K1JT

Band Activity

UTC	dB	DT	Freq	Message	UTC	dB	DT	Freq	Message
155145	-18	-0.3	1307	~	0E6BMS	VA3GMT	R-08		
155145	-13	-0.6	1483	~	F94WBS	I24REF	JN54		
155145	-1	-0.5	1739	~	EA5EN	5B4AAB	-01		
155145	-17	-0.2	2401	~	ON3DNG	WA3C	R+01		
155145	-17	-0.9	2462	~	I70NU	I1RJF	JN45		
155215	-13	-0.6	400	~	V47JA	IK0OZD	-03		
155215	-10	-0.6	922	~	F8DYD	K3WV	-12		
155215	-14	0.1	1483	~	F94WBS	I24REF	JN54		
155215	2	-0.5	1739	~	EA5EN	5B4AAB	-01		
155215	-14	-0.2	2401	~	ON3DNG	WA3C	73		
155215	-17	-0.9	2462	~	I70NU	I1RJF	JN45		
155245	-8	-0.6	922	~	F8DYD	K3WV	-12		
155245	-12	1.1	1483	~	F94WBS	I24REF	JN54		
155245	5	-0.3	1739	~	EA5EN	5B4AAB	RR73		
155245	-18	-0.9	2462	~	I70NU	I1RJF	JN45		
155300	-21	0.2	762	~	KJ3L	I22BNY	RRR		
155300	-20	-0.3	2054	~	DB1BO	HR5NLJ	FJ34		

Rx Frequency

17m **18,100 000** Tx even/1st

388FV 3B8FV Az 251 16553 km Tx 1633 Hz Rx 781 Hz

2018 oct 14 15:53:29

JTAlertX 2.10.14 Settings - IK2QIN - [Logging Enabled - HRD V5/V6]

Options

- Auto clear JTAlert callsigns when WSJT-X decodes cleared
- Waterfall follow WSJT-X minimize and restore.
- Use single click for CQ response

To Top Options

Bring the WSJT-X window to the front of other windows. This can be enabled to occur at the end of every RX/TX period, the 50 second tick of each minute, or on a per-alert basis. If the per-alerts are enabled, the WSJT-X window can remain behind other windows and will only appear when the selected alert is activated.

- Enable bring WSJT-X Window to Top
- Bring WSJT-X Window to Top at end of the TX/RX time period (50secs)
- Bring WSJT-X Window to Top only when these Alerts are activated
 - Own Call
 - CQ and QRZ
 - Wanted Callsign
 - Decode Keywords
 - Wanted Grid
 - Wanted CQ Zone
 - Wanted Prefix
 - Wanted CQ Marathon
 - Wanted US State
 - Wanted DXCC
 - Wanted Continent

WSJT-X v1.9.1 by K1JT

Band Activity

UTC	dB	DT	Freq	Message	UTC	dB	DT	Freq	Message
155300	-20	-0.3	2054	~ DB1BO HK5NLJ FJ34					
155315	-17	-0.6	922	~ F8DYD K3WW RRR					
155315	-21	-0.3	1307	~ K64WV WA3GRT FN05					
155315	-15	-0.1	1483	~ F84WBS I24REF JN54					
155315	3	-0.5	1739	~ G7BHU 5B4AAB -16					
155315	-16	-0.2	2401	~ M00EAX WA3C EN90					
155330	-7	-0.5	1242	~ CQ K32K FN21					
155345	-5	-0.6	922	~ F8DYD K3WW RRR					
155345	-14	-0.6	1312	~ V47JA IK0OZD -03					
155345	-12	-0.8	1483	~ F84WBS I24REF JN54					
155345	-1	-0.5	1739	~ G7BHU 5B4AAB -16					
155345	-13	-0.2	2401	~ M00EAX WA3C EN90					
155400	-19	-0.6	347	~ RK4FD HI8PLE FK58					
155400	-8	-0.5	1242	~ CQ K32K FN21					
155415	-10	-0.6	922	~ F8DYD K3WW RRR					
155415	-14	-0.7	1483	~ F84WBS I24REF JN54					
155415	0	-0.4	1739	~ G7BHU 5B4AAB RR73					

JTAlertX 2.10.14 Settings - IK2QJN - [Logging Enabled - HRD V5/V6]

- JTAlertX Titlebar - Win7 Aero and Win8**
 - Custom Title Color
 - No Font Glow
 - Inactive Title Color
- Extended Display**
 - Show Log Fields
 - Show Bands Confirmed/Worked
 - Show DXCC Names Below Callsigns
 - Show dB (DXCC Name)
- Decoded Callsigns Display**
 - Number of Callsign Lines: 3
 - Maximum per line to display (6 or 7 are best for screens with large fonts): 8
 - Auto adjust font to reduce cropping of Callsign text
 - Clear Decoded Callsigns on Band change
- Window Position**
 - JTAlert position independent of other windows
 - JTAlert always On-Top of other windows
 - Dock JTAlert window to top or bottom of WSJT-X window
 - Top of window
 - Bottom of window

WSJT-X v1.9.1 by K1JT

17m 18,100 000 Tx even/1st

388FV 3B8FV Az 251 16553 km Rx 781 Hz

2018 ott 14 15:54:34

Receiving FT8

388FV 1530 Mauritius 39 53 AF Q

JT65 Band : 160 80 60 40 30 20 17 15 12 10 6 2 # : FT8 Band : 160 80 60 40 30 20 17 15 12 10 6 2 # : Wrk
Callsign : 0 : Callsign : 0 : Cfm

17:54 14/10/2018

WSJT-X v1.9.1 by K1JT

Band Activity

UTC	dB	DT	Freq	Message	UTC	dB	DT	Freq	Message
155300	-20	-0.3	2054	~ DB1BO HK5NLJ FJ34					
155315	-17	-0.6	922	~ F8DYD K3WW RRR					
155315	-21	-0.3	1307	~ K64WV WA3GRT FN05					
155315	-15	-0.1	1483	~ F84WBS I24REF JN54					
155315	3	-0.5	1739	~ G7BHU 5B4AAB -16					
155315	-16	-0.2	2401	~ M00EAX WA3C EN90					
155330	-7	-0.5	1242	~ CQ K32K FN21					
155345	-5	-0.6	922	~ F8DYD K3WW RRR					
155345	-14	-0.6	1312	~ V47JA IK0OZD -03					
155345	-12	-0.8	1483	~ F84WBS I24REF JN54					
155345	-1	-0.5	1739	~ G7BHU 5B4AAB -16					
155345	-13	-0.2	2401	~ M00EAX WA3C EN90					
155400	-19	-0.6	347	~ RK4FD HI8PLE FK58					
155400	-8	-0.5	1242	~ CQ K32K FN21					
155415	-10	-0.6	922	~ F8DYD K3WW RRR					
155415	-14	-0.7	1483	~ F84WBS I24REF JN54					
155415	0	-0.4	1739	~ G7BHU 5B4AAB RR73					

JTAlertX 2.10.14 Settings - IK2QJN - [Logging Enabled - HRD V5/V6]

- Options**
 - Don't activate WSJT-X Free Text field
 - Run as a Single Instance against multiple WSJT-X instances
- Display Options**
 - Restore Window when JTAlert is started
 - Dock to WSJT-X window
 - Left side of window
 - Right side of window

WSJT-X v1.9.1 by K1JT

17m 18,100 000 Tx even/1st

388FV 3B8FV Az 251 16553 km Rx 781 Hz

2018 ott 14 15:54:38

Receiving FT8

388FV 1530 Mauritius 39 53 AF Q

JT65 Band : 160 80 60 40 30 20 17 15 12 10 6 2 # : FT8 Band : 160 80 60 40 30 20 17 15 12 10 6 2 # : Wrk
Callsign : 0 : Callsign : 0 : Cfm

17:54 14/10/2018

WSJT-X v1.9.1 by K1JT

Band Activity

UTC	dB	DT	Freq	Message	UTC	dB	DT	Freq	Message
155300	-20	-0.3	2054	~	DB1BO	HK5N1J	FJ34		
155315	-17	-0.6	922	~	F8DYD	K3WW	RRR		
155315	-21	-0.3	1307	~	K64WV	WA3GME	FN05		
155315	-15	-0.1	1483	~	F84WB	I24REF	JN54		
155315	3	-0.5	1739	~	G7BHU	5B4AAB	-16		
155315	-16	-0.2	2401	~	MM0EAX	WA3C	EN90		
155330	-7	-0.5	1242	~	CQ	K3ZK	FN21		
155345	-5	-0.6	922	~	F8DYD	K3WW	RRR		
155345	-14	-0.6	1312	~	V47JA	IK0OZD	-03		
155345	-12	-0.8	1483	~	F84WB	I24REF	JN54		
155345	-1	-0.5	1739	~	G7BHU	5B4AAB	-16		
155345	-13	-0.2	2401	~	MM0EAX	WA3C	EN90		
155400	-19	-0.6	347	~	RR4FD	HI8PLE	FK58		
155400	-8	-0.5	1242	~	CQ	K3ZK	FN21		
155415	-10	-0.6	922	~	F8DYD	K3WW	RRR		
155415	-14	-0.7	1483	~	F84WB	I24REF	JN54		
155415	0	-0.4	1739	~	G7BHU	5B4AAB	RR73		

Rx Frequency

18,100,000 Hz

388FV

Az 251 16553 km

2018 ott 14 15:54:41

JTAlerX 2.10.14 Settings - IK2QJN - [Logging Enabled - HRD V5/V6]

- Enable Decodes History
- Window Options**
 - Blank line between current and old decodes
 - Display distances in miles
 - Show Callsign LoTW Stripe
 - Show Callsign eQSL Stripe
 - Show Odd_Even Minute Row Colors
 - Show Callsign with US State
 - Show Callsign with B4
- Startup Options**
 - Delete old records (decodes for today are kept)
- Display Options**
 - Restore Window when JTAler is started
 - Follow JTAler Window Minimize and Restore

WSJT-X v1.9.1 by K1JT

Band Activity

UTC	dB	DT	Freq	Message	UTC	dB	DT	Freq	Message
155315	-17	-0.6	922	~	F8DYD	K3WW	RRR		
155315	-21	-0.3	1307	~	K64WV	WA3GME	FN05		
155315	-15	-0.1	1483	~	F84WB	I24REF	JN54		
155315	3	-0.5	1739	~	G7BHU	5B4AAB	-16		
155315	-16	-0.2	2401	~	MM0EAX	WA3C	EN90		
155330	-7	-0.5	1242	~	CQ	K3ZK	FN21		
155345	-5	-0.6	922	~	F8DYD	K3WW	RRR		
155345	-14	-0.6	1312	~	V47JA	IK0OZD	-03		
155345	-12	-0.8	1483	~	F84WB	I24REF	JN54		
155345	-1	-0.5	1739	~	G7BHU	5B4AAB	-16		
155345	-13	-0.2	2401	~	MM0EAX	WA3C	EN90		
155400	-19	-0.6	347	~	RR4FD	HI8PLE	FK58		
155400	-8	-0.5	1242	~	CQ	K3ZK	FN21		
155415	-10	-0.6	922	~	F8DYD	K3WW	RRR		
155415	-14	-0.7	1483	~	F84WB	I24REF	JN54		
155415	0	-0.4	1739	~	G7BHU	5B4AAB	RR73		
155430	-6	-0.5	1241	~	SV1JDX	K3ZK	-08		

Rx Frequency

18,100,000 Hz

388FV

Az 251 16553 km

2018 ott 14 15:54:44

JTAlerX 2.10.14 Settings - IK2QJN - [Logging Enabled - HRD V5/V6]

- Enable Callsign QSO and Band History Display
- Display Options**
 - Display as a mouse-hover Popup
 - Display as a Separate Window
 - Restore Window when JTAler is started
 - Follow JTAler Window Minimize and Restore

WSJT-X v1.9.1 by K1JT

Band Activity

UTC	dB	DT	Freq	Message	UTC	dB	DT	Freq	Message
155315	-17	-0.6	922	~ F8DYD K3WW RRR					
155315	-21	-0.3	1307	~ R64WV VA3GMY FN05					
155315	-15	-0.1	1483	~ F84WBS I24REF JN54					
155315	3	-0.5	1739	~ G7BHU 5B4AAB -16					
155315	-16	-0.2	2401	~ M00EAX WA3C EN90					
155330	-7	-0.5	1242	~ CQ K3ZR FN21					
155345	-5	-0.6	922	~ F8DYD K3WW RRR					
155345	-14	-0.6	1312	~ V47JA IK00ZD -03					
155345	-12	-0.8	1483	~ F84WBS I24REF JN54					
155345	-1	-0.5	1739	~ G7BHU 5B4AAB -16					
155345	-13	-0.2	2401	~ M00EAX WA3C EN90					
155400	-19	-0.6	347	~ RK4FD HI8PLE FK58					
155400	-8	-0.5	1242	~ CQ K3ZR FN21					
155415	-10	-0.6	922	~ F8DYD K3WW RRR					
155415	-14	-0.7	1483	~ F84WBS I24REF JN54					
155415	0	-0.4	1739	~ G7BHU 5B4AAB RR73					
155430	-6	-0.5	1241	~ SV1JDX R3ZR -08					

Rx Frequency

17m 18,100,000

388FV 3B8FV Az 251 16553 km

2018 ott 14 15:54:47

JTAlertX 2.10.14 Settings - IK2QJN - [Logging Enabled - HRD V5/V6]

Enable Band Activity Display

Display Options

- Display as a mouse-hover Popup
- Display as a Separate Window
- No Alert
- Restore Window when JTAlert is started
- Follow JTAlert Window Minimize and Restore
- Show inactive Bands in titlebar
- Enable Counts Filter, RX (Spotter) Continent only

Activity Level Colors

- 50 or more Stations: [Color] Set Font Color
- 20 to 49 Stations: [Color] Set Font Color
- 10 to 19 Stations: [Color] Set Font Color
- 1 to 9 Stations: [Color] Set Font Color
- No Stations: [Color] Set Font Color

Background Colors

- [Color] Set Color
- Solid Background Color
- JT65 [Color] Set Color
- JT9 [Color] Set Color
- FT8 [Color] Set Color

WSJT-X v1.9.1 by K1JT

Band Activity

UTC	dB	DT	Freq	Message	UTC	dB	DT	Freq	Message
155315	-17	-0.6	922	~ F8DYD K3WW RRR					
155315	-21	-0.3	1307	~ R64WV VA3GMY FN05					
155315	-15	-0.1	1483	~ F84WBS I24REF JN54					
155315	3	-0.5	1739	~ G7BHU 5B4AAB -16					
155315	-16	-0.2	2401	~ M00EAX WA3C EN90					
155330	-7	-0.5	1242	~ CQ K3ZR FN21					
155345	-5	-0.6	922	~ F8DYD K3WW RRR					
155345	-14	-0.6	1312	~ V47JA IK00ZD -03					
155345	-12	-0.8	1483	~ F84WBS I24REF JN54					
155345	-1	-0.5	1739	~ G7BHU 5B4AAB -16					
155345	-13	-0.2	2401	~ M00EAX WA3C EN90					
155400	-19	-0.6	347	~ RK4FD HI8PLE FK58					
155400	-8	-0.5	1242	~ CQ K3ZR FN21					
155415	-10	-0.6	922	~ F8DYD K3WW RRR					
155415	-14	-0.7	1483	~ F84WBS I24REF JN54					
155415	0	-0.4	1739	~ G7BHU 5B4AAB RR73					
155430	-6	-0.5	1241	~ SV1JDX R3ZR -08					

Rx Frequency

17m 18,100,000

388FV 3B8FV Az 251 16553 km

2018 ott 14 15:54:52

JTAlertX 2.10.14 Settings - IK2QJN - [Logging Enabled - HRD V5/V6]

Popups

- Show Log QSO to Logger Success
- Show Log QSO to Logger Failure

Visual Effects

- Slide effect on popup windows

Tooltips

- Don't use Balloon Style for tooltips

WSJT-X v1.9.1 by K1JT

Band Activity

UTC	dB	DT	Freq	Message	UTC	dB	DT	Freq	Message
155315	-17	-0.6	922	~ F8DYD K3WW RRR					
155315	-21	-0.3	1307	~ F84WV VA3GMT FN05					
155315	-15	-0.1	1483	~ F84WBS I24REF JN54					
155315	-3	-0.5	1739	~ G7BHU 5B4AAB -16					
155315	-16	-0.2	2401	~ MM0EAX WA3C EN90					
155330	-7	-0.5	1242	~ CQ K3ZK FN21					
155345	-5	-0.6	922	~ F8DYD K3WW RRR					
155345	-14	-0.6	1312	~ V47JA IK002D -03					
155345	-12	-0.8	1483	~ F84WBS I24REF JN54					
155345	-1	-0.5	1739	~ G7BHU 5B4AAB -16					
155345	-13	-0.2	2401	~ MM0EAX WA3C EN90					
155400	-19	-0.6	347	~ RK4FD H18PLE FK58					
155400	-8	-0.5	1242	~ CQ K3ZK FN21					
155415	-10	-0.6	922	~ F8DYD K3WW RRR					
155415	-14	-0.7	1483	~ F84WBS I24REF JN54					
155415	0	-0.4	1739	~ G7BHU 5B4AAB RR73					
155430	-6	-0.5	1241	~ SV1JDX K3ZK -08					
155430	-10	-0.7	922	~ F8DYD K3WW RRR					

JTAlertX 2.10.14 Settings - IK2QJN - [Logging Enabled - HRD V5/V6]

Hot Keys

Enable all HotKeys
Click the edit box. Type the required hotkey keystroke combination. Combinations of Ctrl, Alt and Shift keys plus one other key are supported. To clear a HotKey, type a backspace.

Show Windows

Settings	F11	Macros	F6
Decodes History	F9	Band Activity	F2
Callsign History	F3	Text Message	F5
Alert Summary	F1		

Callsign Display Lines

One Line	ALT + 1	Two Lines	ALT + 2
Three Lines	ALT + 3	Four Lines	ALT + 4

Miscellaneous

Sound On/Off	ALT + X	Out of Shack On/Off	ALT + S
Halt TX On/Off	ALT + H		

Browser Lookups

QRZ.com lookup of QSO Partner Callsign	F4
Open Browser to HamSpots TX mode page	F7

WSJT-X v1.9.1 by K1JT

Band Activity

UTC	dB	DT	Freq	Message	UTC	dB	DT	Freq	Message
155345	-14	-0.6	1312	~ V47JA IK002D -03					
155345	-12	-0.8	1483	~ F84WBS I24REF JN54					
155345	-1	-0.5	1739	~ G7BHU 5B4AAB -16					
155345	-13	-0.2	2401	~ MM0EAX WA3C EN90					
155400	-19	-0.6	347	~ RK4FD H18PLE FK58					
155400	-8	-0.5	1242	~ CQ K3ZK FN21					
155415	-10	-0.6	922	~ F8DYD K3WW RRR					
155415	-14	-0.7	1483	~ F84WBS I24REF JN54					
155415	0	-0.4	1739	~ G7BHU 5B4AAB RR73					
155430	-6	-0.5	1241	~ SV1JDX K3ZK -08					
155445	-10	-0.7	922	~ F8DYD K3WW RRR					
155445	-20	-0.9	1257	~ CQ KA2DDX FN02					
155445	-15	-0.8	1326	~ IK8IOO R8TL R-13					
155445	-12	-0.5	1483	~ F84WBS I24REF JN54					
155445	2	-0.6	1738	~ CQ 5B4AAB RM64					
155445	-17	-1.0	1853	~ V47JA I1R1JF JN45					
155445	-14	-0.3	2401	~ MM0EAX WA3C 73					

JTAlertX 2.10.14 Settings - IK2QJN - [Logging Enabled - HRD V5/V6]

Performance

Check QSO Log Record

3 secs Delay time after QSO logged to check record written to log file. On slow decoding PCs it may be necessary to increase this value if JTAlert incorrectly reports log failure.

ADIF SQLite Cache File

Only check this option if Support has recommended the setting.

Delete ADIF Cache file on JTAlert startup

Database Query Cache

Checking this option may have a significant negative impact on database lookup times, especially on busy bands with several decodes requiring processing.

Note: Only check this option if Support has recommended the setting.

Do not cache database query results in memory

WSJT-X v1.9.1 by K1JT

Band Activity

UTC	dB	DT	Freq	Message	UTC	dB	DT	Freq	Message
155345	-14	-0.6	1312	~ V47JA IK002D -03					
155345	-12	-0.8	1483	~ F84WBS I24REF JN54					
155345	-1	-0.5	1739	~ G7BHU 5B4AAB -16					
155345	-13	-0.2	2401	~ MM0EAX WA3C EN90					
155400	-19	-0.6	347	~ RK4FD HI8PLE FK58					
155400	-8	-0.5	1242	~ CQ K32K FN21					
155415	-10	-0.6	922	~ F8DYD K3WV RRR					
155415	-14	-0.7	1483	~ F84WBS I24REF JN54					
155415	0	-0.4	1739	~ G7BHU 5B4AAB RR73					
155430	-6	-0.5	1241	~ SV1JDX K32K -08					
155445	-10	-0.7	922	~ F8DYD K3WV RRR					
155445	-20	-0.9	1257	~ CQ KA2DDX FN02					
155445	-15	-0.8	1326	~ IK8IOO R8TL R-13					
155445	-12	-0.9	1483	~ F84WBS I24REF JN54					
155445	2	-0.6	1738	~ CQ 5B4AAB RM64					
155445	-17	-1.0	1853	~ V47JA I1R1JF JN45					
155445	-14	-0.3	2401	~ MM0EAX WA3C 73					

JTAlertX 2.10.14 Settings - IK2QJN - [Logging Enabled - HRD V5/V6]

Filters

- Logging
 - Last QSO API
 - Log B4 Database
 - Standard ADIF File
 - DXLab DXKeeper
 - HRD V5/V6**
 - Log4OM
 - ACLog
 - MxW (CSV File)
- Applications
 - Auto-Start
 - WSJT-X
 - DXLab Suite
- Window
 - Macros (Free-Text)
 - Decodes History
 - Callsign QSO History
 - Band Activity Display
 - Popup Windows
- Miscellaneous
 - Hot Keys
 - Performance
- Web Services
 - TCPIP Network Ports
 - Online Logbooks
 - Online XML Callbooks
 - Scan Log and Rebuild

HamSpots.net - Send Decode Spots

JTAlert can send new decodes as spots to HamSpots.net for viewing on the WSJT and Band pages. This is 2 to 3 minutes faster and more reliable than using PSKReporter.

Receive Text Messages

Receive text messages from other JTAlert users

Place received message text in Windows clipboard

Clear History when JTAlert started

Auto close message received popup window

Popup window display time (secs)

Close Message window after message sent

Alert Sound - Wave File Path

Volume

WSJT-X v1.9.1 by K1JT

Band Activity

UTC	dB	DT	Freq	Message	UTC	dB	DT	Freq	Message
155345	-14	-0.6	1312	~ V47JA IK002D -03					
155345	-12	-0.8	1483	~ F84WBS I24REF JN54					
155345	-1	-0.5	1739	~ G7BHU 5B4AAB -16					
155345	-13	-0.2	2401	~ MM0EAX WA3C EN90					
155400	-19	-0.6	347	~ RK4FD HI8PLE FK58					
155400	-8	-0.5	1242	~ CQ K32K FN21					
155415	-10	-0.6	922	~ F8DYD K3WV RRR					
155415	-14	-0.7	1483	~ F84WBS I24REF JN54					
155415	0	-0.4	1739	~ G7BHU 5B4AAB RR73					
155430	-6	-0.5	1241	~ SV1JDX K32K -08					
155445	-10	-0.7	922	~ F8DYD K3WV RRR					
155445	-20	-0.9	1257	~ CQ KA2DDX FN02					
155445	-15	-0.8	1326	~ IK8IOO R8TL R-13					
155445	-12	-0.9	1483	~ F84WBS I24REF JN54					
155445	2	-0.6	1738	~ CQ 5B4AAB RM64					
155445	-17	-1.0	1853	~ V47JA I1R1JF JN45					
155445	-14	-0.3	2401	~ MM0EAX WA3C 73					

JTAlertX 2.10.14 Settings - IK2QJN - [Logging Enabled - HRD V5/V6]

Spots to HamSpots.net

Used to send newly decoded callsigns as spots to the HamSpots.net website.

TCP Port

Band Activity Display

Used to receive band and mode counts of active callsigns posting spots to the HamSpots.net website.

TCP Port

Text Messages

Used for transfer of text messages between JTAlert users.

TCP Port

WSJT-X v1.9.1 by K1JT

Band Activity

UTC	dB	DT	Freq	Message	UTC	dB	DT	Freq	Message
155415	0	-0.4	1739	~	G7BHU	5B4AAB	RR73		
155430	-6	-0.5	1241	~	SV1JDX	R3ZK	-08		
155445	-10	-0.7	922	~	F8DYD	K3WV	RRR		
155445	-20	-0.9	1257	~	CQ	KAZDPX	FN02		
155445	-15	-0.8	1326	~	IK8IOO	K8TL	R-13		
155445	-12	-0.9	1483	~	F84WBS	I24REF	JN54		
155445	2	-0.6	1738	~	CQ	5B4AAB	KM64		
155445	-17	-1.0	1853	~	V47JA	I1RJP	JN45		
155445	-14	-0.3	2401	~	M00EAX	WA3C	73		
155500	-8	-0.5	1240	~	SV1JDX	R3ZK	RRR		
155515	-20	-0.6	347	~	DL8ALH	H18PLE	FK58		
155515	-10	-0.6	922	~	F8DYD	K3WV	RRR		
155515	-14	-0.2	1326	~	IK8IOO	K8TL	RRR		
155515	-16	-0.8	1482	~	F84WBS	I24REF	JN54		
155515	4	-0.5	1738	~	WB5CQV	5B4AAB	R-07		
155515	-16	-0.9	1853	~	V47JA	I1RJP	JN45		
155530	-10	-0.5	1240	~	SV1JDX	R3ZK	73		

JTAlertX 2.10.14 Settings - IK2QIN - [Logging Enabled - HRD V5/V6]

- Logging
 - QRZ.com: Enable
 - HRDLog.net: Enable
 - HamQTH.com: Enable
 - eQSL.cc: Enable
 - ClubLog.org: Enable
- Applications
 - Auto-Start: WSJT-X, DXLab Suite
 - Window: Macros (Free-Text), Decodes History, Callsign QSO History, Band Activity Display, Popup Windows
- Miscellaneous
 - Hot Keys, Performance, Web Services
- Online XML Callbooks
 - Do Not Use an Online Service. (Selected)
 - HamQTH.com Online XML Service.
 - QRZ.com Online XML Service.

WSJT-X v1.9.1 by K1JT

Band Activity

UTC	dB	DT	Freq	Message	UTC	dB	DT	Freq	Message
155415	0	-0.4	1739	~	G7BHU	5B4AAB	RR73		
155430	-6	-0.5	1241	~	SV1JDX	R3ZK	-08		
155445	-10	-0.7	922	~	F8DYD	K3WV	RRR		
155445	-20	-0.9	1257	~	CQ	KAZDPX	FN02		
155445	-15	-0.8	1326	~	IK8IOO	K8TL	R-13		
155445	-12	-0.9	1483	~	F84WBS	I24REF	JN54		
155445	2	-0.6	1738	~	CQ	5B4AAB	KM64		
155445	-17	-1.0	1853	~	V47JA	I1RJP	JN45		
155445	-14	-0.3	2401	~	M00EAX	WA3C	73		
155500	-8	-0.5	1240	~	SV1JDX	R3ZK	RRR		
155515	-20	-0.6	347	~	DL8ALH	H18PLE	FK58		
155515	-10	-0.6	922	~	F8DYD	K3WV	RRR		
155515	-14	-0.2	1326	~	IK8IOO	K8TL	RRR		
155515	-16	-0.8	1482	~	F84WBS	I24REF	JN54		
155515	4	-0.5	1738	~	WB5CQV	5B4AAB	R-07		
155515	-16	-0.9	1853	~	V47JA	I1RJP	JN45		
155530	-10	-0.5	1240	~	SV1JDX	R3ZK	73		

JTAlertX 2.10.14 Settings - IK2QIN - [Logging Enabled - HRD V5/V6]

An online Callbook lookup is automatically performed whenever the WSJT-X "DX Call" value changes. That is, whenever the callsign of your current QSO partner changes.

- Do Not Use an Online Service. (Selected)
- HamQTH.com Online XML Service.
- QRZ.com Online XML Service.

HamQTH.com XML Lookup

Callsign: Password:

Last Error Message:

QRZ.com XML Lookup

Callsign: Password:

Last Error Message:

Last Lookup Date:

Subscription Expires:

WSJT-X v1.9.1 by K1JT

Band Activity

UTC	dB	DT	Freq	Message	UTC	dB	DT	Freq	Message
155415	0	-0.4	1739	~	G7BHU	5B4AAB	RR73		
155430	-6	-0.5	1241	~	SV1JDX	R3ZK	-08		
155445	-10	-0.7	922	~	F8DYD	K3WV	RRR		
155445	-20	-0.9	1257	~	CQ	KAZDPX	FN02		
155445	-15	-0.8	1326	~	IK8IOO	K8TL	R-13		
155445	-12	-0.9	1483	~	F84WBS	I24REF	JN54		
155445	2	-0.6	1738	~	CQ	5B4AAB	KM64		
155445	-17	-1.0	1853	~	V47JA	I1RJP	JN45		
155445	-14	-0.3	2401	~	M00EAX	WA3C	73		
155500	-8	-0.5	1240	~	SV1JDX	R3ZK	RRR		
155515	-20	-0.6	347	~	DL8ALH	H18PLE	FK58		
155515	-10	-0.6	922	~	F8DYD	K3WV	RRR		
155515	-14	-0.2	1326	~	IK8IOO	K8TL	RRR		
155515	-16	-0.8	1482	~	F84WBS	I24REF	JN54		
155515	4	-0.5	1738	~	WB5CQV	5B4AAB	R-07		
155515	-16	-0.9	1853	~	V47JA	I1RJP	JN45		
155530	-10	-0.5	1240	~	SV1JDX	R3ZK	73		

JTAlertX 2.10.14 Settings - IK2QIN - [Logging Enabled - HRD V5/V6]

An online Callbook lookup is automatically performed whenever the WSJT-X "DX Call" value changes. That is, whenever the callsign of your current QSO partner changes.

- Do Not Use an Online Service. (Selected)
- HamQTH.com Online XML Service.
- QRZ.com Online XML Service.

HamQTH.com XML Lookup

Callsign: Password:

Last Error Message:

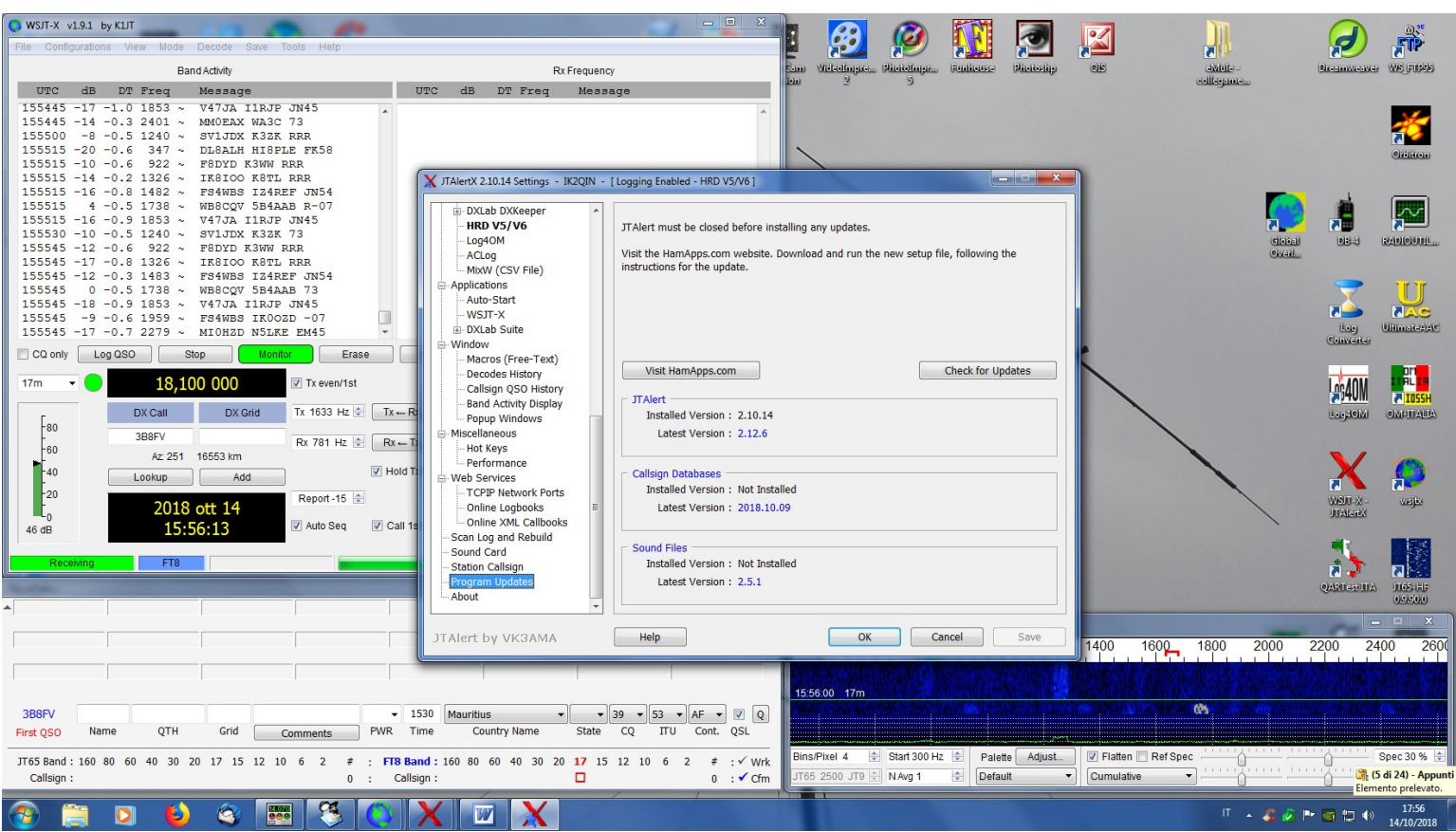
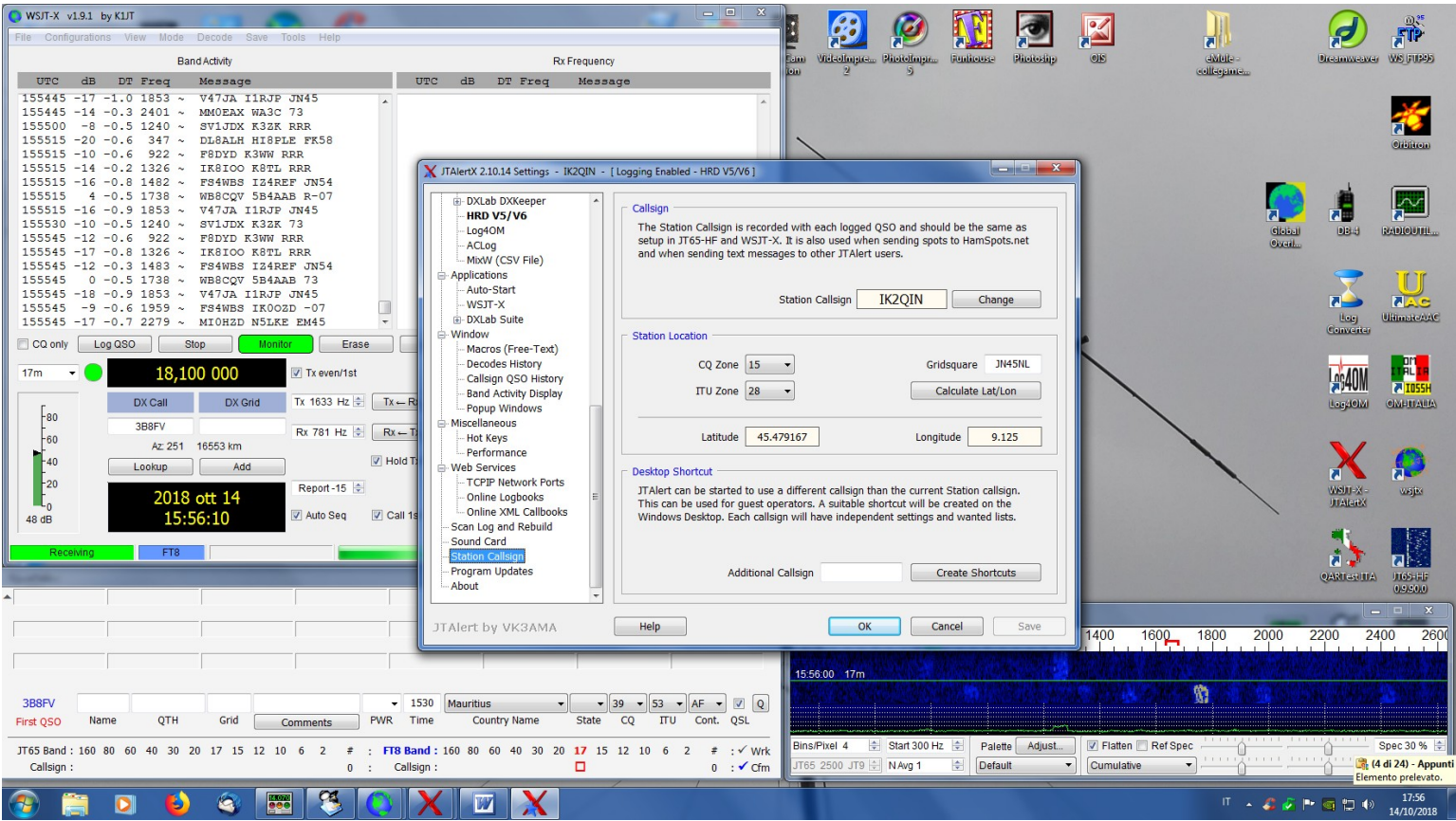
QRZ.com XML Lookup

Callsign: Password:

Last Error Message:

Last Lookup Date:

Subscription Expires:



WSJT-X v1.9.1 by Settings

General Radio Audio Tx Macros Reporting Frequencies Colors Adv...

Station Details
 My Call: IK2QIN My Grid: JN45ni AutoGrid IARU Region: All
 Message generation for type 2 compound callsign holders: Full call in Tx3

Display
 Blank line between decoding periods
 Display distance in miles
 Tx messages to Rx frequency window
 Show DXCC entity and worked before status
 Show principal prefix instead of country name

Behavior
 Monitor off at startup
 Monitor returns to last used frequency
 Double-click on call sets Tx enable
 Disable Tx after sending 73
 Enable VHF/UHF/Microwave features
 Allow Tx frequency changes while transmitting
 Single decode
 Decode after EME delay
 Tx watchdog: 6 minutes
 Periodic CW ID Interval: 0

2018 ott 14 15:57:29

Receiving FT8 14/15 WD:6m

388FV

First QSO	Name	QTH	Grid	Comments	PWR	Time	Country Name	State	CQ	ITU	Cont.	QSL
JT65 Band :	160	80	40	30	20	17	15	12	10	6	2	# : ✓ Wrk
Call sign :	0 : Callsign :											

Global Oval... BB-4 RADIO... Log Converter UltimateAAC Log4OM OMHTABLA WSJT-X - JTALEX Wjdx QARTERITA JT65 HF 09500

QSO History

388FV : FT8 QSOs - None

160m	17m	New Band
160m	17m	New Band
80m	15m	
60m	12m	
40m	10m	
30m	6m	
20m	2m	

*** First FT8 QSO ***

WSJT-X - Wide Graph

Controls 600 800 1000 1200 1400 1600 1800 2000 2200 2400 2600

15:57:15 17m

Bin/Pixel 4 Start 300 Hz Palette Adjust... Flatten Ref Spec Spec 30 %

JT65 2500 JT9 N/Avg 1 Default Cumulative Smooth 1

17:57 14/10/2018

WSJT-X v1.9.1 by Settings

General Radio Audio Tx Macros Reporting Frequencies Colors Adv...

Rig: Ham Radio Deluxe Poll Interval: 1 s

CAT Control
 Network Server:
 Serial Port Parameters
 Baud Rate: 4800
 Data Bits: Default Seven Eight
 Stop Bits: Default One Two
 Handshake: Default None XON/XOFF Hardware
 Force Control Lines: DTR: RTS:

PTT Method
 VOX DTR
 CAT RTS
 Port: COM1
 Transmit Audio Source
 RearData FrontMic
 Mode
 None USB Data/Pkt
 Split Operation
 None Rig Fake It
 Test CAT Test PTT

2018 ott 14 15:57:36

Receiving FT8 6/15 WD:6m

388FV

First QSO	Name	QTH	Grid	Comments	PWR	Time	Country Name	State	CQ	ITU	Cont.	QSL
JT65 Band :	160	80	40	30	20	17	15	12	10	6	2	# : ✓ Wrk
Call sign :	0 : Callsign :											

Global Oval... BB-4 RADIO... Log Converter UltimateAAC Log4OM OMHTABLA WSJT-X - JTALEX Wjdx QARTERITA JT65 HF 09500

QSO History

388FV : FT8 QSOs - None

160m	17m	New Band
160m	17m	New Band
80m	15m	
60m	12m	
40m	10m	
30m	6m	
20m	2m	

*** First FT8 QSO ***

WSJT-X - Wide Graph

Controls 600 800 1000 1200 1400 1600 1800 2000 2200 2400 2600

15:57:30 17m

Bin/Pixel 4 Start 300 Hz Palette Adjust... Flatten Ref Spec Spec 30 %

JT65 2500 JT9 N/Avg 1 Default Cumulative Smooth 1

17:57 14/10/2018

WSJT-X v1.9.1 by Settings

General Radio Audio Tx Macros Reporting Frequencies Colors Advanced

Soundcard
 Input: Linea in ingresso (Dispositivo) Mono
 Output: Altoparlanti (Dispositivo High) Mono

Save Directory
 Location: C:\Users\IK2QIN\AppData\Local\WSJT-X\save
 AzEl Directory
 Location: C:\Users\IK2QIN\AppData\Local\WSJT-X

Remember power settings by band
 Transmit Tune

17m

2018 ott 14 15:57:41

Receiving FT8 11/15 WD:6m

ITAlertX:210.14 IK2QIN [-17m,HRD5,F#1] (Updates!) Alerts | Settings | View | Sound OFF | ?

KAZDXX KBT1 5B4AAB
 -17 U.S.A. -15 U.S.A. -01 Cyprus

388FV 1530 Mauritius 39 53 AF Q

JT65 Band: 160 80 40 30 20 17 15 12 10 6 2 # FT8 Band: 160 80 40 30 20 17 15 12 10 6 2 # Wrk
 Callsign: 0 : Callsign: 0 : # : Cfm

QSO History

388FV : FT8 QSOs - None

160m	17m	New Band
80m	15m	
60m	12m	
40m	10m	
30m	6m	
20m	2m	

*** First FT8 QSO ***

WSJT-X - Wide Graph

Controls 600 800 1000 1200 1400 1600 1800 2000 2200 2400 2600

15:57:30 17m

Bins/Pixel 4 Start 300 Hz Palette Adjust... Flatten Ref Spec Spec 30 %

JT65 2500 JT9 N.Avg 1 Default Cumulative (2 di 24) - Appunt Elemento prelevato.

17:57 14/10/2018

WSJT-X v1.9.1 by Settings

General Radio Audio Tx Macros Reporting Frequencies Colors Advanced

TNX 73 GL
 CQ DX IK2QIN
 CQ CQ IK2QIN
 CQ NA IK2QIN
 CQ JA IK2QIN
 CQ AS IK2QIN
 CQ SD IK2QIN
 CQ AF IK2QIN
 CQ SA IK2QIN

17m

2018 ott 14 15:57:45

Receiving FT8 0/15 WD:6m

ITAlertX:210.14 IK2QIN [-17m,HRD5,F#1] (Updates!) Alerts | Settings | View | Sound OFF | ?

IZ2SNY
 -15 Italy

388FV 1530 Mauritius 39 53 AF Q

JT65 Band: 160 80 40 30 20 17 15 12 10 6 2 # FT8 Band: 160 80 40 30 20 17 15 12 10 6 2 # Wrk
 Callsign: 0 : Callsign: 0 : # : Cfm

QSO History

388FV : FT8 QSOs - None

160m	17m	New Band
80m	15m	
60m	12m	
40m	10m	
30m	6m	
20m	2m	

*** First FT8 QSO ***

WSJT-X - Wide Graph

Controls 600 800 1000 1200 1400 1600 1800 2000 2200 2400 2600

15:57:30 17m

Bins/Pixel 4 Start 300 Hz Palette Adjust... Flatten Ref Spec Spec 30 %

JT65 2500 JT9 N.Avg 1 Default Cumulative (3 di 24) - Appunt Elemento prelevato.

17:57 14/10/2018

Settings - Logging

- Prompt me to log QSO
- Convert mode to RTTY
- dB reports to comments
- Clear DX call and grid after logging

Network Services

- Enable PSK Reporter Spotting

UDP Server

UDP Server: 127.0.0.1 Accept UDP requests
 UDP Server port number: 2237 Notify on accepted UDP request
 Accepted UDP request restores window

N1MM Logger+ Broadcasts

- Enable logged contact ADIF broadcast

N1MM Server name or IP address: 127.0.0.1
 N1MM Server port number: 2333

QSO History

388FV : FT8 QSOs - None

160m	17m	New Band
	15m	
	12m	
	10m	
	6m	
	2m	

*** First FT8 QSO ***

2018 ott 14 15:57:50

Receiving FT8 5/15 WD:6m

ITAlertX:210.14 IK2QIN [-17m HRD5 F #1] (Updates!) Alerts | Settings | View | Sound OFF | ?

IZ2SNY 9GSAR
-15 Italy -19 Ghana

388FV 1530 Mauritius 39 53 AF Q

JT65 Band : 160 80 40 30 20 17 15 12 10 6 2 # : FT8 Band : 160 80 40 30 20 17 15 12 10 6 2 # : Wrk
 Callsign : 0 : Callsign : 0 : Cfm

Settings - Frequency Calibration

Slope: 0.0000 ppm Intercept: 0.00 Hz

Working Frequencies

IARU Region	Mode	Frequency
All	WSPR	0.136 000 MHz (2190m)
All	JT65	0.136 130 MHz (2190m)
All	JT9	0.136 130 MHz (2190m)
Region 1	FreqCal	0.198 000 MHz (OOB)

Station Information

Band	Offset	Antenna Description

QSO History

388FV : FT8 QSOs - None

160m	17m	New Band
	15m	
	12m	
	10m	
	6m	
	2m	

*** First FT8 QSO ***

2018 ott 14 15:57:55

Receiving FT8 10/15 WD:6m

ITAlertX:210.14 IK2QIN [-17m HRD5 F #1] (Updates!) Alerts | Settings | View | Sound OFF | ?

IZ2SNY 9GSAR
-15 Italy -19 Ghana

388FV 1530 Mauritius 39 53 AF Q

JT65 Band : 160 80 40 30 20 17 15 12 10 6 2 # : FT8 Band : 160 80 40 30 20 17 15 12 10 6 2 # : Wrk
 Callsign : 0 : Callsign : 0 : Cfm

WSJT-X v1.9.1 by Settings

File Configurations

UTC dB

155630	-16
155630	-7
155645	-15
155645	-6
155645	-17
155645	-13
155700	-15
155700	-11
155715	-14
155715	-17
155715	-15
155715	-1
155715	-13
155715	-24
155730	-15
155730	-6
155730	-19

CQ only Log

17m

80
60
40
20
0
-20
-40
-60
-80
46 dB

2018 ott 14
15:57:58

Auto Seq Call 1st

CQ DX IK2QIN

Receiving FT8 13/15 WD:6m

AlertX: 2.10.14 IK2QIN [-17m,HRD5,F#1] (Updates!) Alerts | Settings | View | Sound OFF | ?

388FV

First QSO	Name	QTH	Grid	Comments	PWR	Time	Country Name	State	CQ	ITU	Cont.	QSL	
JT65 Band	160	80	40	30	20	17	15	12	10	6	2	#	Wrk
Call sign	0 : Callsign : 17 15 12 10 6 2 # : ✓ Cfm												

1530 Mauritius 39 53 AF

JT65 Band : 160 80 40 30 20 17 15 12 10 6 2 # : ✓ Wrk
Call sign : 0 : Callsign : 17 15 12 10 6 2 # : ✓ Cfm

WideImpres... 2
PhotoImpres... 5
Fantouise
Photoslip
OIS

Global OverL...
BB-4
RADIOOUTL...
Log Converter
UltimateAAC
Log4OM
OMHTABIA
WSJT-X - JT65HF
Wsjx
QARTERITA
JT65HF 09500

QSO History

388FV : FT8 QSOs - None

160m	17m	New Band
80m	15m	
60m	12m	
40m	10m	
30m	6m	
20m	2m	

*** First FT8 QSO ***

WSJT-X - Wide Graph

Controls 600 800 1000 1200 1400 1600 1800 2000 2200 2400 2600

15:57:45 17m

Bins/Pixel 4 Start 300 Hz Palette Adjust... Flatten Ref Spec Spec 30 %

JT65 2500 JT9 N.Avg 1 Default Cumulative (6 di 24) - Appuntamento Elemento prelevato.

17:57
14/10/2018

WSJT-X v1.9.1 by Settings

File Configurations

UTC dB

155700	-15
155700	-14
155715	-17
155715	-15
155715	-1
155715	-13
155715	-24
155730	-15
155730	-6
155730	-19
155745	-17
155745	-15
155745	0
155745	-11
155745	-11
155745	-18

CQ only Log

17m

80
60
40
20
0
-20
-40
-60
-80
47 dB

2018 ott 14
15:58:02

Auto Seq Call 1st

CQ DX IK2QIN

Receiving FT8 2/15 WD:6m

AlertX: 2.10.14 IK2QIN [-17m,HRD5,F#1] (Updates!) Alerts | Settings | View | Sound OFF | ?

388FV

First QSO	Name	QTH	Grid	Comments	PWR	Time	Country Name	State	CQ	ITU	Cont.	QSL	
JT65 Band	160	80	40	30	20	17	15	12	10	6	2	#	Wrk
Call sign	0 : Callsign : 17 15 12 10 6 2 # : ✓ Cfm												

1530 Mauritius 39 53 AF

JT65 Band : 160 80 40 30 20 17 15 12 10 6 2 # : ✓ Wrk
Call sign : 0 : Callsign : 17 15 12 10 6 2 # : ✓ Cfm

WideImpres... 2
PhotoImpres... 5
Fantouise
Photoslip
OIS

Global OverL...
BB-4
RADIOOUTL...
Log Converter
UltimateAAC
Log4OM
OMHTABIA
WSJT-X - JT65HF
Wsjx
QARTERITA
JT65HF 09500

QSO History

388FV : FT8 QSOs - None

160m	17m	New Band
80m	15m	
60m	12m	
40m	10m	
30m	6m	
20m	2m	

*** First FT8 QSO ***

WSJT-X - Wide Graph

Controls 600 800 1000 1200 1400 1600 1800 2000 2200 2400 2600

15:57:45 17m

Bins/Pixel 4 Start 300 Hz Palette Adjust... Flatten Ref Spec Spec 30 %

JT65 2500 JT9 N.Avg 1 Default Cumulative (7 di 24) - Appuntamento Elemento prelevato.

17:58
14/10/2018

WSJT-X v1.9.1 by K1JT

File Configurations View Mode Decode Save Tools Help

Mode: FT8

UTC	dB	DT	Freq	Message
155700	-11	-0.5	1238	K32K -12
155715	-14	-0.6	1238	H18PLE R-14
155715	-17	-0.8	1238	DX FNO2
155715	-15	-0.8	1238	EM89
155715	-1	-0.5	1738	AB KM64
155715	-13	-0.2	2401	WA3C 73
155715	-24	-2.3	2563	AJOLIH GR28
155730	-15	0.2	762	NY JN45
155730	-6	-0.5	1237	K32K -12
155730	-19	-0.6	1683	AR IJ95
155745	-17	-0.6	409	H18PLE R-19
155745	-15	-0.8	1491	I24REF JN54
155745	0	-0.4	1738	AB KM64
155745	-11	-0.9	1856	R8TL EM89
155745	-11	-0.6	1959	F84WBS IK0QZD -07
155745	-18	-0.3	2401	S51NO WA3C R-17
155800	-11	-0.5	1237	IU3GOR K32K -12

Rx Frequency: UTC dB DT Freq Message

17m 18,100,000 Tx even/1st

DX Call: 388FV DX Grid: Tx 1633 Hz Rx 781 Hz

Az 251 16553 km

2018 ott 14 15:58:16

Receiving FT8 1/15 WD:6m

Calling CQ: CQ, dB, RRR, CQ DX IK2QIN

Answering CQ: Grid, R+dB, 73

Buttons: CQ only, Log QSO, Stop, Monitor, Erase, Decode, Enable Tx, Halt Tx, Tune, Menus

Bottom Panel: 388FV, 1530, Mauritius, 39, 53, AF, Q, JT65 Band, FT8 Band, Callsign

Desktop icons: VLC, PhotoImp, Funhouse, Photoslip, OIS, Global, BB-4, RADIOUTL, Log Converter, UltimateAAC, Log4OM, OMHTAUA, WSJT-X - JTALEX, WSJT-X, QARTERITA, JT65-HF 09500

WSJT-X - Wide Graph

Controls: 600, 800, 1000, 1200, 1400, 1600, 1800, 2000, 2200, 2400, 2600

15:58:00 17m

Bins/Pixel 4 Start 300 Hz Palette Adjust Flatten Ref Spec Spec 30 %

JT65 2500 JT9 N/Avg 1 Default Cumulative Smooth 1

17:58 14/10/2018

WSJT-X v1.9.1 by K1JT

File Configurations View Mode Decode Save Tools Help

Mode: FT8

UTC	dB	DT	Freq	Message
155700	-11	-0.5	1238	K32K -12
155715	-14	-0.6	1238	H18PLE R-14
155715	-17	-0.8	1238	DX FNO2
155715	-15	-0.8	1238	EM89
155715	-1	-0.5	1738	AB KM64
155715	-13	-0.2	2401	WA3C 73
155715	-24	-2.3	2563	AJOLIH GR28
155730	-15	0.2	762	NY JN45
155730	-6	-0.5	1237	K32K -12
155730	-19	-0.6	1683	AR IJ95
155745	-17	-0.6	409	H18PLE R-19
155745	-15	-0.8	1491	I24REF JN54
155745	0	-0.4	1738	AB KM64
155745	-11	-0.9	1856	R8TL EM89
155745	-11	-0.6	1959	F84WBS IK0QZD -07
155745	-18	-0.3	2401	S51NO WA3C R-17
155800	-11	-0.5	1237	IU3GOR K32K -12

Rx Frequency: UTC dB DT Freq Message

17m 18,100,000 Tx even/1st

DX Call: 388FV DX Grid: Tx 1633 Hz Rx 781 Hz

Az 251 16553 km

2018 ott 14 15:58:25

Receiving FT8 10/15 WD:6m

Calling CQ: CQ, dB, RRR, CQ DX IK2QIN

Answering CQ: Grid, R+dB, 73

Buttons: CQ only, Log QSO, Stop, Monitor, Erase, Decode, Enable Tx, Halt Tx, Tune, Menus

Bottom Panel: 388FV, 1530, Mauritius, 39, 53, AF, Q, JT65 Band, FT8 Band, Callsign

Desktop icons: VLC, PhotoImp, Funhouse, Photoslip, OIS, Global, BB-4, RADIOUTL, Log Converter, UltimateAAC, Log4OM, OMHTAUA, WSJT-X - JTALEX, WSJT-X, QARTERITA, JT65-HF 09500

WSJT-X - Wide Graph

Controls: 600, 800, 1000, 1200, 1400, 1600, 1800, 2000, 2200, 2400, 2600

15:58:15 17m

Bins/Pixel 4 Start 300 Hz Palette Adjust Flatten Ref Spec Spec 30 %

JT65 2500 JT9 N/Avg 1 Default Cumulative Smooth 1

17:58 14/10/2018

WSJT-X v1.9.1 by K1JT

File Configurations View Mode Decode Save Tools Help

Band Activity

UTC	dB	DT	Freq	Message
155715	-1	-0.5	1738	CQ 5B
155715	-13	-0.2	2401	HB9FBP WA3C 73
155715	-24	-2.3	2563	OH6QAJ A30LH GK28
155730	-15	0.2	762	CQ I228NY JN45
155730	-6	-0.5	1237	IU3GOR K32K -12
155730	-19	-0.6	1683	CQ 9G5AR IJ95
155745	-17	-0.6	409	DL8ALH H18PL R-19
155745	-15	-0.8	1491	F84WBS I24REF JN54
155745	0	-0.4	1738	CQ 5B4AAB KM64
155745	-11	-0.9	1856	SV2HQ R8TL EM89
155745	-11	-0.6	1959	F84WBS IK002D -07
155745	-18	-0.3	2401	S51NO WA3C R-17
155800	-11	-0.5	1237	IU3GOR K32K -12
155815	-19	-0.6	408	DL8ALH H18PL 73
155815	-17	-0.6	761	I228NY CU3AT HM68
155815	-14	-0.8	1490	F84WBS I24REF R-05
155815	-8	-0.5	1738	PA7ML 5B4AAB -02

Rx Frequency

UTC	dB	DT	Freq	Message
-----	----	----	------	---------

CQ only
 Log QSO
 Stop

 Menus

17m **18,100 000** Tx even/1st

Tx 1633 Hz

Rx 781 Hz

Az 251 16553 km Hold Tx Freq

2018 ott 14
15:58:29

Report -15 Auto Seq Call 1st

14/15 WD:6m

JT65 Band : 160 80 60 40 30 20 17 15 12 10 6 2 # : **FT8 Band** : 160 80 60 40 30 20 **17** 15 12 10 6 2 # : ✓ Wrk
 Callsign : 0 : Callsign :

3B8FV : FT8 QSOs - None

160m	17m	New Band
160m	17m	New Band
80m	15m	
60m	12m	
40m	10m	
30m	6m	
20m	2m	

*** First FT8 QSO ***

Controls 600 800 1000 1200 1400 1600 1800 2000 2200 2400 2600

15:58:15 17m

Bins/Pixel 4 Start 300 Hz Palette Adjust... Flatten Ref Spec Spec 30 %
 JT65 2500 JT9 N Avg 1 Default Cumulative (10 di 24) - Appunt Elemento prelevato.

17:58
 14/10/2018