

FT8

MANUALE DI USO PRATICO

Grid

R+dB

73

Gen msg

Free msg

13/15 WD:0m

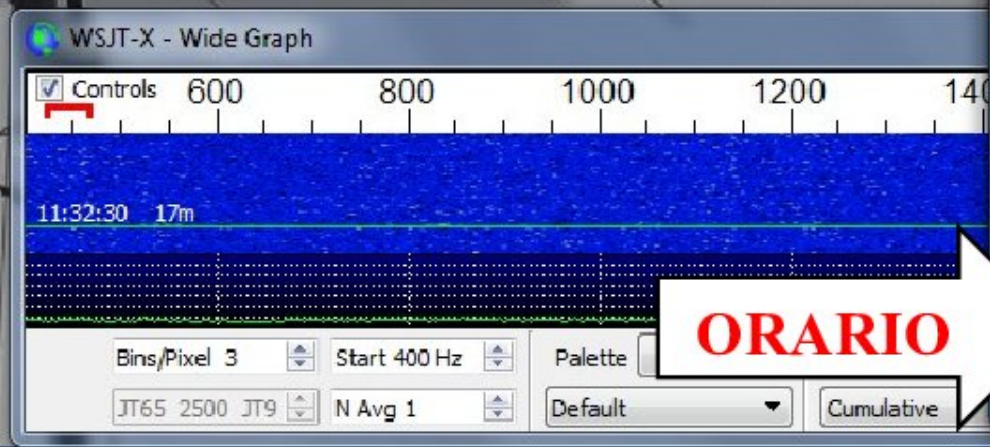
 WSJT-X - JTAlertX

 Log Converter









ORARIO

domenica 2 settembre 2018

settembre 2018

lu	ma	me	gi	ve	sa	do
27	28	29	30	31	1	2
3	4	5	6	7	8	9
10	11	12	13	14	15	16
17	18	19	20	21	22	23
24	25	26	27	28	29	30
1	2	3	4	5	6	7



13:32:42

[Modifica impostazioni data e ora...](#)

IT

13:32

02/09/2018

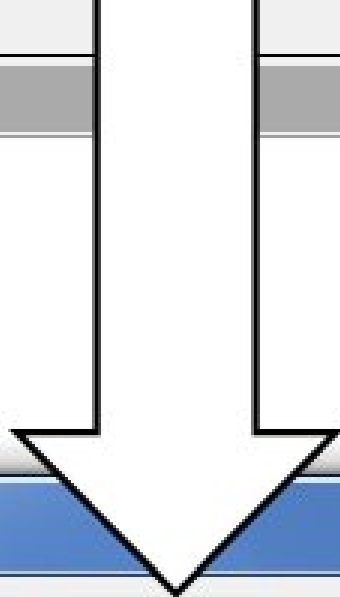
Band Activity

DT Freq

Message

UTC

dB



Data e ora [Close]

Data e ora | Orologi aggiuntivi | Ora Internet



Data:
domenica 2 settembre 2018

Ora:
13:36:59

 Modifica data e ora...

Fuso orario _____
(UTC+1.00) Amsterdam, Berlino, Berna, Roma, Stoccolma, Vienna

Modifica fuso orario...

ora

ora | Orologi aggiuntivi | Ora Internet

to computer è impostato per la sincronizzazione automatica con
'-a.nist.gov'.

ima sincronizzazione: 09/09/2018 alle 13:20

e durante la sincronizzazione di Windows con time-a.nist.gov. Timeout.
azione non riuscita.

na sincronizzazione dell'orologio eseguita il giorno 02/09/2018 alle ore

[Cambia impostazioni...](#)

cos'è la sincronizzazione con l'ora Internet

OK Annulla Applica

Enable Tx Halt Tx Tune

Answering CQ

Grid
R+dB
73

Gen msg

Free msg

WSJT-X - Wide Graph

Controls 600

UTC dB DT Freq Message

UTC dB DT Freq

Data e ora

Impostazioni ora Internet

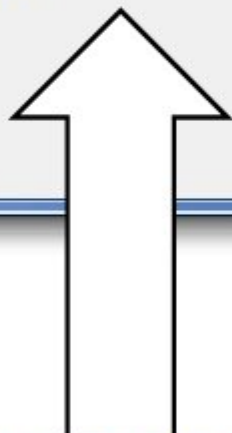
Configurare le impostazioni ora Internet:

Sincronizza con un server di riferimento orario Internet

Server:

Sincronizzazione dell'orologio con time-b.nist.gov completata il giorno 02/09/2018 alle ore 13:40.

[Che cos'è la sincronizzazione con l'ora Internet](#)



Log QSO

17m

18,07

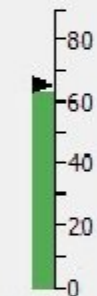
DX Call

LU7DSY

Lookup

2018

11:46:33



64 dB

Enable Tx

WSJT-X v1.8.0 by K1JT

File Configurations View Mode Decode Save Tools Help

Band Activity

UTC	dB	DT Freq	Message
PULSANTI CQ GEN MSG FREE MSG			

Rx Frequency

Log QSO Stop **Monitor** Erase Enable Tx Halt Tx Tune Menus

17m **18,070 000** Tx even/1st

DX Call DX Grid Tx 412 Hz Tx ← Rx
 LU7DSY Rx 1756 Hz Rx ← Tx

Loopup Add Report -15 Hold Tx Free

2018 set 02
11:44:44 Auto Seq Call let

NA VHF Contest

Calling CQ	Answering CQ
CQ	Grid
dB	R+dB
RRR	73

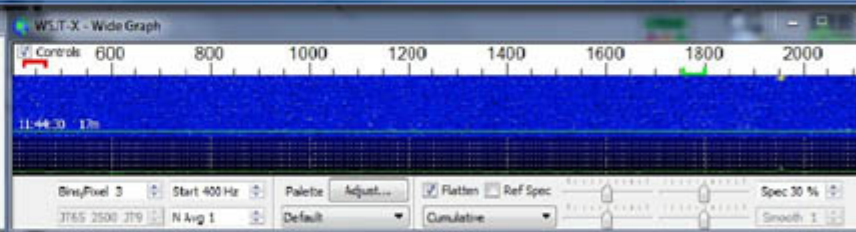
CQ DX ICQBN Gen msg Free msg

Receiving FT8 14/15 W/6m

TAlerts 2.10.14 ICQBN [cs17mHR05,F,8] [Updated] Alerts Settings View Sound Off

Name	QTH	FFB1	PWR	Time	Country Name	State	CQ	ITU	Cont.	QSL
LU7DSY				1122	Argentina		13	14	SA	

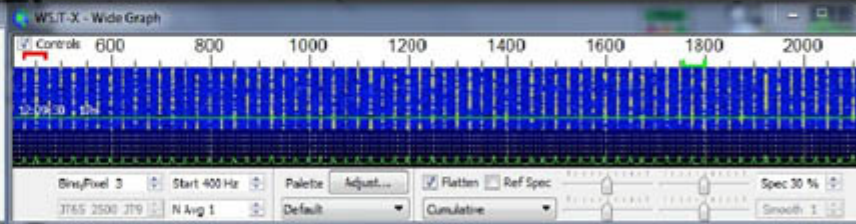
QSO #4



The image shows the WSJT-X v1.8.0 software interface. A white arrow labeled "SETTAGGIO" points to the "File" menu, which is open and shows the "Settings..." option highlighted. The main window displays a frequency of 18,070,000 Hz and a call sign of LU7DSY. The interface includes a menu bar, a main display area with a message log, and a control panel with various buttons and sliders. A "Wide Graph" window is visible at the bottom right, showing a spectrum plot. The Windows taskbar at the bottom shows the system tray with the date and time: 14:09 02/09/2018.

SETTAGGIO

The "Alerts" window in WSJT-X is shown, displaying a table with columns for Name, QTH, Grid, Comments, PWR, Time, Country Name, State, CQ, ITU, Cont., and QSL. The current call sign LU7DSY is visible in the top left corner of the window.



dB	DT	Freq	Message	UTC
14	1.5	1900 ~	NA9/TSNWMRN3S	

GENERALE 

Settings

General | Radio | Audio | Tx Macros | Reporting | Frequencies | Colors | Advanced

Station Details

My Call: My Grid: IARU Region:

Message generation for type 2 compound callign holders:

Display

Blank line between decoding periods Font...

Display distance in miles Decoded Text Font...

Tx messages to Rx frequency window

Show DXCC entity and worked before status

Behavior

Monitor off at startup Enable VFAHF/Microwave features

Monitor returns to last used frequency Allow Tx frequency changes while transmitting

Double-click on call sets Tx enable Single decode

Disable Tx after sending 73 Decode after SME delay

Tx watchdog:

Periodic CW ID Interval:

CW ID after 73

Log QSO Stop Monitor Erase Decode

18,070 000

Tx every list

Tx:

Rx:

Report:

Auto Seq Call list

NA VHF Contest

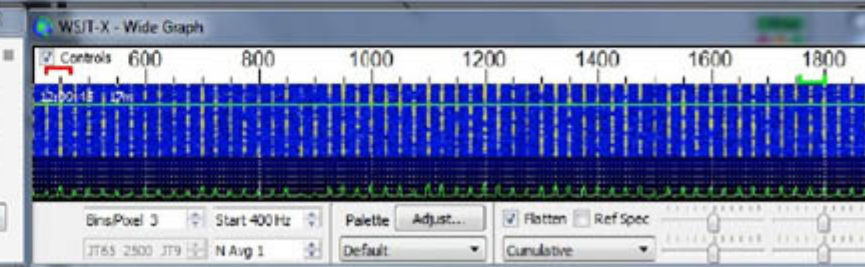
2018 set 02
12:09:49

Calling CQ	Q
CQ	
dB	
RRR	
CQ DX IK2QJN	

FT8

10.14 IK2QJN [-17mJHRD5.F.#1] (Updated) Alerts Settings View Sound Off [7]

Name	QTH	Grid	Comments	PWR	Time	Country Name	State	CQ	ITU	Cont.	QSL
		FF81			1122	Argentina	13	14	SA	<input checked="" type="checkbox"/>	Q



Band Activity

dB	DT	Freq	Message
12	0.1	724	~ CQ 02760 J046
8	0.1	897	~ MM0HVU N3XX EM73
12	0.3	1045	~ CQ DU1AVC PK04
-8	0.1	1191	~ CQ R80D N014
-21	0.1	1255	~ J16IHG SV1GSP R-10
4	-0.3	1356	~ EA9AF A41KB -09
-13	0.2	1732	~ CQ EW6DM K035
-15	0.9	1834	~ PR8ZX K2TQC RR73
-2	-0.6	2012	~ CQ MM0JIV I075
-21	0.1	765	~ EA9AF UW8SM R+07
-7	1.4	852	~ WB2REM EA7HS 73
-12	0.1	871	~ CQ BX2AFO PL05
-9	0.1	568	~ SP6DXH ZB2IF R-14
7	0.2	659	~ EA5F2J WB2REM +03
1	0.5	1043	~ CQ DX IW1GAL JN44
-13	0.2	1145	~ CQ MM0HVU I085
-4	-0.6	1191	~ R80D EA4CRP -16
-5	0.1	1356	~ UW8SM EA9AF RR73
-16	0.9	1419	~ EA8LG R7KO R-18
3	0.6	1583	~ UN7TB EW1P K033
-10	-0.0	1718	~ CQ EB8AC IL28
-9	0.1	1838	~ DU1AVC EA1BD -12
-13	0.2	2011	~ CQ JS6TKM PL24

Log QSO Stop Monitor

18,100 000

Tx even/list

Tx 422 Hz

LX7007 Rx 1756 Hz

Hold Tx Freq

Report -15

Auto Sea Call list

NA VHF Contest

CQ IK2QJN JN45

CQ DX IK2QJN

Settings

General Radio Audio Tx Macros Reporting Frequencies Colors Advanced

Rig: **Han Radio Deluxe** Poll Interval: 1 s

CAT Control

Network Server: []

Serial Port Parameters

Baud Rate: 19200

Data Bits

Seven Eight

Stop Bits

One Two

Handshake

None XON/XOFF Hardware

Force Control Lines

DTR: [] RTS: []

PTT Method

YOX DTR

CAT RTS

Port: COM8

Transmit Audio Source

Rear/Data Front/Mic

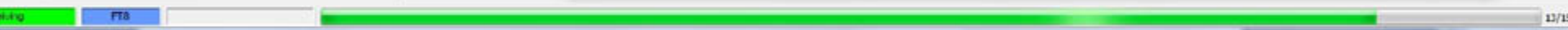
Mode

None USB Data/Rtt

Split Operation

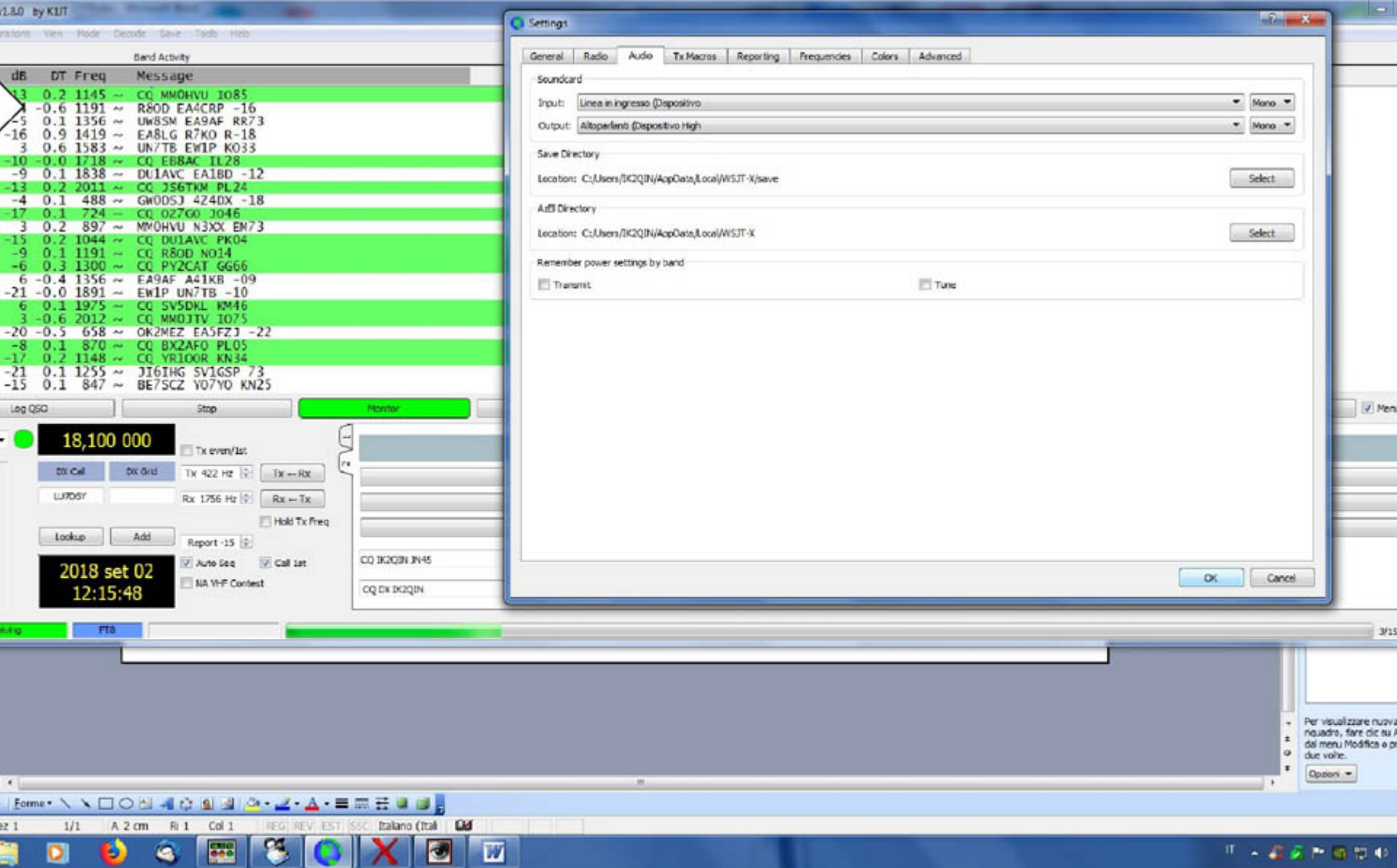
None Rig Fake It

Select tab to change configuration parameters.



Per visualizzare nuova
quadro, fare clic su A
dal menu Modifica e p
due volte.

Opzioni



Band Activity

dB	DT	Freq	Message
13	0.2	1145	~ CQ MM0HVU 1085
-1	-0.6	1191	~ R80D EA4CRP -16
-5	0.1	1356	~ UW8SM EA9AF RR73
-16	0.9	1419	~ EA8LG R7KO R-18
3	0.6	1583	~ UN7TB EW1P K033
-10	-0.0	1718	~ CQ E88AC IL28
-9	0.1	1838	~ DU1AVC EA1BD -12
-13	0.2	2011	~ CQ JS6TKM PL24
-4	0.1	488	~ GW0DSJ 4Z4DX -18
-17	0.1	724	~ CQ OZ7G0 3046
3	0.2	897	~ MM0HVU N3XX EM73
-15	0.2	1044	~ CQ DU1AVC PK04
-9	0.1	1191	~ CQ R80D N014
-6	0.3	1300	~ CQ PY2CAT GG66
6	-0.4	1356	~ EA9AF A41KB -09
-21	-0.0	1891	~ EW1P UN7TB -10
6	0.1	1975	~ CQ SV5DKL KM46
3	-0.6	2012	~ CQ MM0JTV 3075
-20	-0.5	658	~ ON2MEZ EA5FZJ -22
-8	0.1	870	~ CQ BX2AFO PL05
-17	0.2	1148	~ CQ YR100R KN34
-21	0.1	1255	~ JI6IHG SV1GSP 73
-15	0.1	847	~ BE7SCZ Y07YD KN25

Log QSO Stop Monitor

18,100 000

Tx even/list

Tx Call Tx Grid Tx 422 Hz Tx → Rx

LX700Y Rx 1756 Hz Rx → Tx

Hold Tx Freq

Report -15

Auto Sea Call list

NA VHF Contest

2018 set 02
12:15:48

CQ IK2QJN JN45
CQ DX IK2QJN

Settings

General Radio **Audio** Tx Macros Reporting Frequencies Colors Advanced

Soundcard

Input: Linea in ingresso (Dispositivo) Mono

Output: Altoparlanti (Dispositivo High) Mono

Save Directory

Location: C:\Users\IK2QJN\AppData\Local\WSJT-X\save Select

Audi Directory

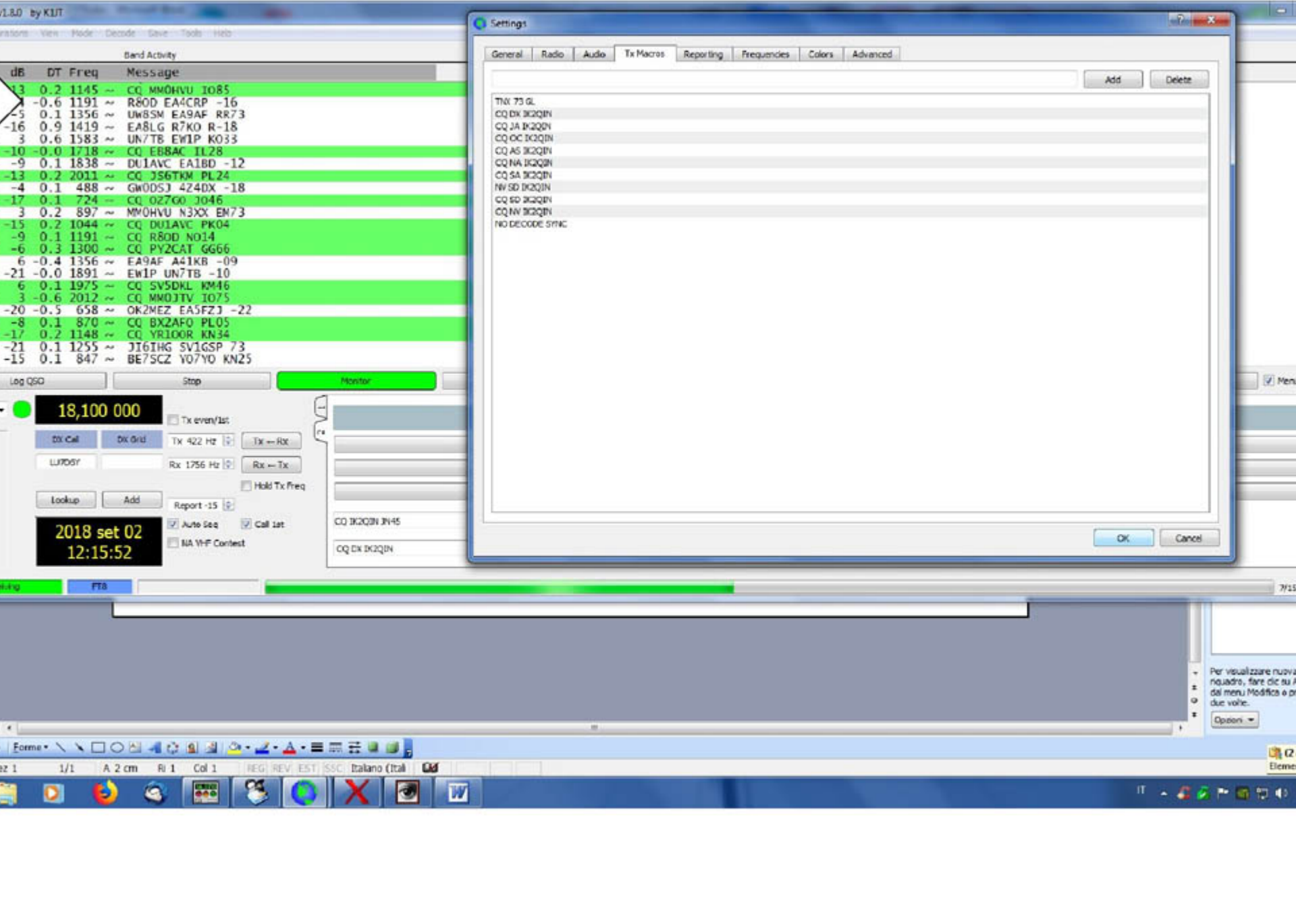
Location: C:\Users\IK2QJN\AppData\Local\WSJT-X Select

Remember power settings by band

Transmit Tune

OK Cancel

Per visualizzare nuova
quadro, fare clic su A
dal menu Modifica e p
due volte.
Options



dB	DT	Freq	Message
13	0.2	1145	~ CQ MM0HVU 1085
-1	-0.6	1191	~ R80D EA4CRP -16
-5	0.1	1356	~ UW8SM EA9AF RR73
-16	0.9	1419	~ EA8LG R7KO R-18
3	0.6	1583	~ UN7TB EW1P K033
-10	-0.0	1718	~ CQ E88AC IL28
-9	0.1	1838	~ DU1AVC EA1BD -12
-13	0.2	2011	~ CQ JS6TKM PL24
-4	0.1	488	~ GW0DSJ 4Z4DX -18
-17	0.1	724	~ CQ OZ7G0 3046
3	0.2	897	~ MM0HVU N3XX EM73
-15	0.2	1044	~ CQ DU1AVC PK04
-9	0.1	1191	~ CQ R80D N014
-6	0.3	1300	~ CQ PY2CAT GG66
6	-0.4	1356	~ EA9AF A41KB -09
-21	-0.0	1891	~ EW1P UN7TB -10
6	0.1	1975	~ CQ SV5DKL KM46
3	-0.6	2012	~ CQ MM0JTV 1075
-20	-0.5	658	~ OK2MEZ EA5FZJ -22
-8	0.1	870	~ CQ BX2AFO PL05
-17	0.2	1148	~ CQ YR100R KN34
-21	0.1	1255	~ JI6IHG SV1GSP 73
-15	0.1	847	~ BE7SCZ Y07YD KN25

Log QSO Stop Monitor

18,100 000

Tx even/list

Tx Call Tx Grid Tx 422 Hz Tx → Rx

LX700Y Rx 1756 Hz Rx → Tx

Hold Tx Freq

Lookup Add Report -15

Auto Sea Call list

NA VHF Contest

CQ 3K2QIN JN45

CQ DX 3K2QIN

Settings

General Radio Audio Tx Macros Reporting Frequencies Colors Advanced

Add Delete

TX: 75 GL
CQ DX 3K2QIN
CQ JA 3K2QIN
CQ OC 3K2QIN
CQ AS 3K2QIN
CQ NA 3K2QIN
CQ SA 3K2QIN
NW SD 3K2QIN
CQ SD 3K2QIN
CQ NW 3K2QIN
NO DECODE SYNC

OK Cancel

FT8

Per visualizzare nuova riquadro, fare clic su A dal menu Modifica e p due volte.

Option

Band Activity

dB	DT	Freq	Message
13	0.2	1145	~ CQ MM0HVU 1085
-1	-0.6	1191	~ R80D EA4CRP -16
-5	0.1	1356	~ UW8SM EA9AF RR73
-16	0.9	1419	~ EA8LG R7KO R-18
3	0.6	1583	~ UN7TB EW1P K033
-10	-0.0	1718	~ CQ E88AC IL28
-9	0.1	1838	~ DU1AVC EA1BD -12
-13	0.2	2011	~ CQ JS6TKM PL24
-4	0.1	488	~ GM0DSJ 4Z4DX -18
-17	0.1	724	~ CQ OZ7G0 J046
3	0.2	897	~ MM0HVU N3XX EM73
-15	0.2	1044	~ CQ DU1AVC PK04
-9	0.1	1191	~ CQ R80D NO14
-6	0.3	1300	~ CQ PY2CAT GG66
6	-0.4	1356	~ EA9AF A41KB -09
-21	-0.0	1891	~ EW1P UN7TB -10
6	0.1	1975	~ CQ SV5DKL KM46
3	-0.6	2012	~ CQ MM0JTV J075
-20	-0.5	658	~ OK2MEZ EA5FZJ -22
-8	0.1	870	~ CQ BX2AFO PL05
-17	0.2	1148	~ CQ YR100R KN34
-21	0.1	1255	~ JI6IHG SV1GSP 73
-15	0.1	847	~ BE7SCZ Y07YD KN25

Log QSO [Stop] [Monitor]

18,100 000

Tx even/list

Tx Call [Tx Grid] Tx 422 Hz [Tx -> Rx]

LX700Y Rx 1756 Hz [Rx -> Tx]

Hold Tx Freq

Lookup Add Report -15

Auto Sea Call list

NA VHF Contest

CQ IK2QJN JN45

CQ DX IK2QJN

Settings

General Radio Audio Tx Macros Reporting Frequencies Colors Advanced

Logging

- Prompt me to log QSO
- Convert mode to RTTY
- dB reports to comments
- Clear DX call and grid after logging

Network Services

- Enable PSK Reporter Spotting

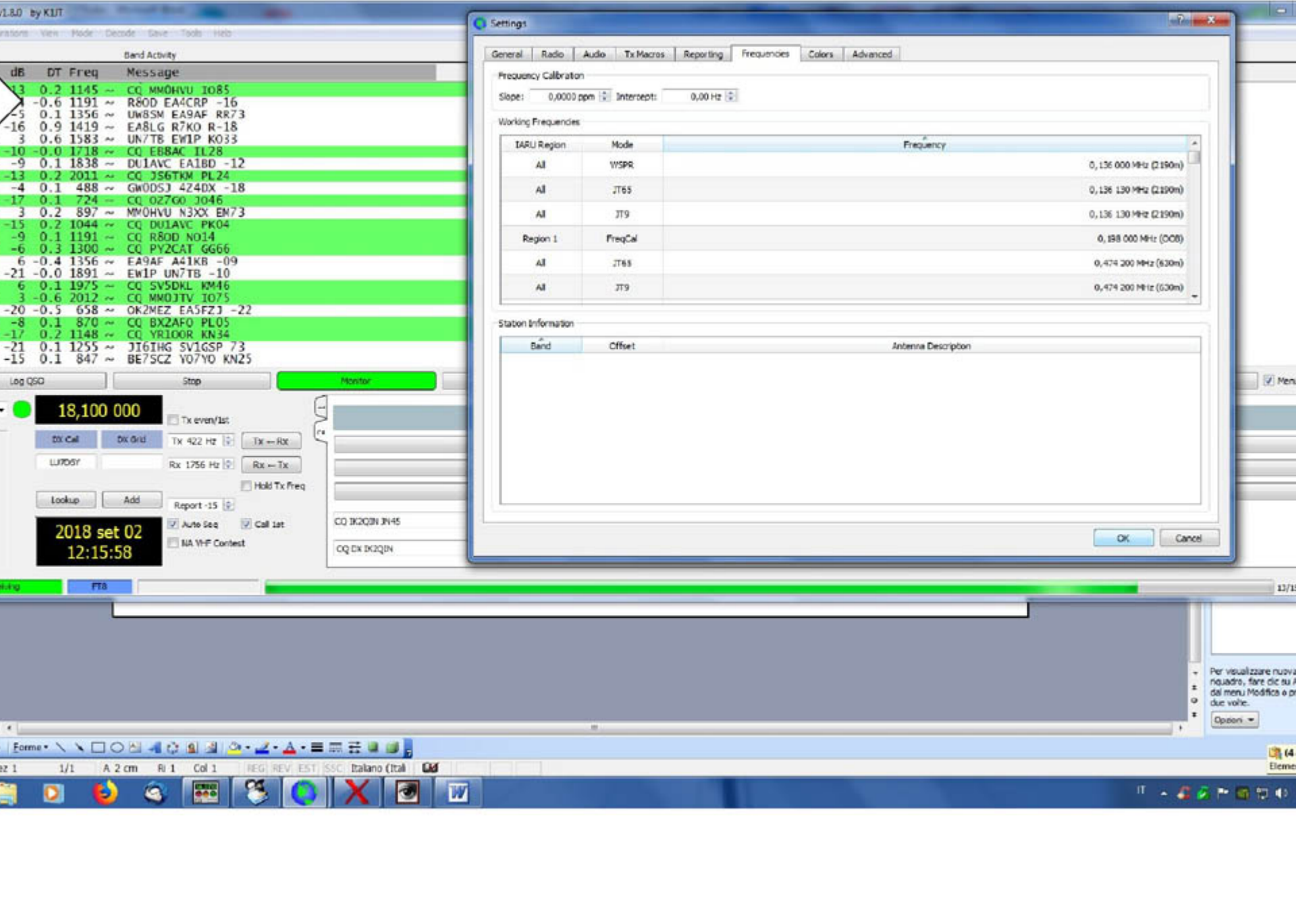
UDP Server

UDP Server: 127.0.0.1 Accept UDP requests

UDP Server port number: 2237 Notify on accepted UDP request

Accepted UDP request restores window

OK Cancel



1.8.0 by K1JT

ptions View Mode Decode Save Tools Help

Band Activity

dB	DT	Freq	Message
13	0.2	1145	~ CQ MM0HVU 1085
-1	-0.6	1191	~ R80D EA4CRP -16
-5	0.1	1356	~ UW8SM EA9AF RR73
-16	0.9	1419	~ EA8LG R7KO R-18
3	0.6	1583	~ UN7TB EW1P K033
-10	-0.0	1718	~ CQ E88AC IL28
-9	0.1	1838	~ DU1AVC EA1BD -12
-13	0.2	2011	~ CQ JS6TKM PL24
-4	0.1	488	~ GM0DSJ 4Z4DX -18
-17	0.1	724	~ CQ OZ7G0 J046
3	0.2	897	~ MM0HVU N3XX EM73
-15	0.2	1044	~ CQ DU1AVC PK04
-9	0.1	1191	~ CQ R80D NO14
-6	0.3	1300	~ CQ PY2CAT GG66
6	-0.4	1356	~ EA9AF A41KB -09
-21	-0.0	1891	~ EW1P UN7TB -10
6	0.1	1975	~ CQ SV5DKL KM46
3	-0.6	2012	~ CQ MM0JTV J075
-20	-0.5	658	~ OK2MEZ EA5FZJ -22
-8	0.1	870	~ CQ BX2AFO PL05
-17	0.2	1148	~ CQ YR100R KN34
-21	0.1	1255	~ JI6IHG SV1GSP 73
-15	0.1	847	~ BE7SCZ Y07YO KN25

Log QSO Stop Monitor

18,100 000

Tx even/list
Tx Call Tx Grid Tx 422 Hz Tx -- Rx
LX700Y Rx 1756 Hz Rx -- Tx
 Hold Tx Freq
Report -15
 Auto Sea Call list
 NA VHF Contest

2018 set 02
12:15:58

CQ IK2QJN JN45
CQ DX IK2QJN

Settings

General Radio Audio Tx Macros Reporting **Frequencies** Colors Advanced

Frequency Calibration
Slope: 0.0003 ppm Intercept: 9.00 Hz

Working Frequencies

IARU Region	Mode	Frequency
All	WSPR	0,136 000 MHz (2190m)
All	JT65	0,136 130 MHz (2190m)
All	JT9	0,136 130 MHz (2190m)
Region 1	FreqCal	0,188 000 MHz (000)
All	JT65	0,474 200 MHz (630m)
All	JT9	0,474 200 MHz (630m)

Station Information

Band	Offset	Antenna Description
------	--------	---------------------

OK Cancel

Per visualizzare nuova
quadro, fare clic su A
dal menu Modifica e p
due volte.
Option

Band Activity

dB	DT	Freq	Message
-6	-0.4	1356	EA9AF A41KB -09
-1	-0.0	1891	EW1P UN7TB -10
6	0.1	1975	CQ SV5DKL KM46
3	-0.6	2012	CQ MM0JTV 1075
-20	-0.5	658	OK2MEZ EA5FZJ -22
-8	0.1	870	CQ BX2AFO PL05
-17	0.2	1148	CQ YR100R KN34
-21	0.1	1255	J16IHG SV1GSP 73
15	0.1	847	BE7SCZ Y07YO KN25
-3	0.1	568	SP6DXH Z021F R-17
4	0.2	660	CQ A41ZZ LL93
-5	0.3	870	BX2AFO DM5HF J043
1	0.5	1045	DU1AVC IW1GAL -10
1	0.3	1191	R80D EA4CRP -16
-1	0.1	1356	CQ EA9AF IN75
-16	0.2	1522	SC9GOL PA3CAC 73
-2	0.4	1583	UN7TB EW1P R-02
-11	-0.0	1718	DL2JAU EBBAC -05
-11	0.6	1774	CQ E54NY K038
-12	0.1	1838	DU1AVC EA1BD -12
-1	0.1	2016	BX2AFO DD3VM J053
-23	0.9	1419	EA8LG R7KO R-18
-14	2.2	1562	CQ C03SAR EL93

Log QSO Stop Monitor

18,100 000

Tx even/list

Tx Call Tx Grid Tx 422 Hz Tx ← Rx

LX700Y Rx 1756 Hz Rx ← Tx

Hold Tx Freq

Lookup Add Report -15

Auto Sea Call list

NA VHF Contest

CQ IK2QJN JN45

CQ DX IK2QJN

Settings

General Radio Audio Tx Macros Reporting Frequencies Colors Advanced

CQ in message	KIABC
My Call in message	KIABC
Transmitted message	KIABC
New DXCC	KIABC
New Call	KIABC

OK Cancel

WSJT-X v1.8.0 by K1JT

File Configurations View Mode Decode Save Tools Help

Band Activity

UTX	dB	DT	Freq	Message
	6	-0.4	1356	~ EA9AF A41KB -09
	6	-0.0	1891	~ EW1P UN7TB -10
	6	0.1	1975	~ CQ SV5DKL KM46
	3	-0.6	2012	~ CQ MM0JTV IO75
121530	-20	-0.5	658	~ OK2MEZ EA5FZJ -22
121530	-8	0.1	870	~ CQ BX2AFO PL05
121530	-17	0.2	1148	~ CQ YR100R KN34
121530	-21	0.1	1255	~ J161HG SV1GSP 73
121530	-15	0.1	847	~ BE7SCZ YO7YO KN25
121545	-3	0.1	568	~ SP6DXH ZB2IF R-17
121545	4	0.2	660	~ CQ A41ZZ LL93
121545	-5	0.3	870	~ BX2AFO DW5HF J043
121545	1	0.5	1045	~ DU1AVC IW1GAL -10
121545	1	0.3	1191	~ R80D EA4CRP -16
121545	-1	0.1	1356	~ CQ EA9AE IM75
121545	-16	0.2	1522	~ SQ9GOL PA3CAC 73
121545	-2	0.4	1583	~ UN7TB EW1P R-02
121545	-11	-0.0	1718	~ DL2JAU EB8AC -05
121545	-11	0.6	1774	~ CQ E54NY KD38
121545	-12	0.1	1838	~ DU1AVC EA1BD -12
121545	-1	0.1	2016	~ BX2AFO DD3VM J053
121545	-23	0.9	1419	~ EA8LG R7KO R-18
121545	-14	2.2	1562	~ CQ CO3SAR EL93

Log QSO Stop Monitor

17m 18,100 000

Tx even/lat

Dx Cal Dx Grid Tx 922 Hz Tx → Rx

LX700R Rx 1756 Hz Rx ← Tx

Lookup Add Report -15

Hold Tx Freq

Auto Sea Call lat

NA W-F Contest

CQ JX2QIN JH45

CQ DX JX2QIN

Settings

General Radio Audio Tx Macros Reporting Frequencies Colors Advanced

JT65 decoding parameters

Random erasure patterns: 6

Aggressive decoding level: 0

Two-pass decoding

Miscellaneous

Degrade S/N of .wav file: 0.0 dB

Receiver bandwidth: 5000 Hz

Tx delay: 0.2 s

x 2 Tone Spacing

OK Cancel

Per visualizzare nuovamente questo riquadro, fare clic su Appunti di Office dal menu Modifica o premere CTRL+C due volte.

Options


Disegno Forme

Pg 1 Sez 1 1/1 A 2 cm Ri 1 Col 1 REG REV EST SSC Italiano (Ital)

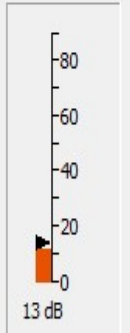
16 di 24 - Appunti Elemento prelevato.

1436 02/09/2018

Log QSO Stop Monitor Erase Decode Enable Tx Halt Tx Tune Menus

160m 

0,000 000



DX Call **DX Grid**
DC2TL JO31
Az: 348 689 km
Lookup Add

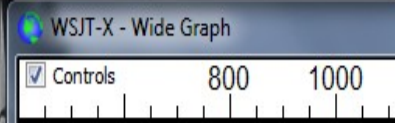
Tx even/1st
Tx 1799 Hz Tx ← Rx
Rx 1799 Hz Rx ← Tx
 Hold Tx Freq
Report -15
 Auto Seq Call 1st
 NA VHF Contest

2018 set 02
18:40:24

Calling CQ	Answering CQ
CQ	Grid
dB	R+dB
RRR	73
	<input checked="" type="radio"/> Gen msg
CQ DX IK2QJN	<input type="radio"/> Free msg



FT8 0/100 WD:6m





Erase Decode Enable Tx Halt Tx Tune Menus

1

2

Generate Std Msgs

	Next	Now	Pwr
DC2TL IK2QIN JN45	<input type="radio"/>	<input type="button" value="Tx 1"/>	<input type="text" value=""/>
DC2TL IK2QIN -15	<input type="radio"/>	<input type="button" value="Tx 2"/>	<input type="text" value=""/>
DC2TL IK2QIN R-15	<input type="radio"/>	<input type="button" value="Tx 3"/>	<input type="text" value=""/>
DC2TL IK2QIN RRR	<input type="radio"/>	<input type="button" value="Tx 4"/>	<input type="text" value=""/>
DC2TL IK2QIN 73	<input type="radio"/>	<input type="button" value="Tx 5"/>	<input type="text" value=""/>
CQ IK2QIN JN45	<input checked="" type="radio"/>	<input type="button" value="Tx 6"/>	<input type="text" value=""/>

old Tx Freq

all 1st

0/

Switch to this Tx message NOW

Double-click to toggle between RRR and RR73 message Tx4 (not allowed for type2 compound call holders)

RR73 messages should only be used when you are reasonably confident that no message repetitions are required



Erase Decode Enable Tx Halt Tx Tune Menus

1
2

	Next	Now	Pwr
<input type="text" value="Generate Std Msgs"/>			
<input type="text" value="DC2TL IK2QIN JN45"/>	<input type="radio"/>	<input type="button" value="Tx 1"/>	<input type="range" value="0"/>
<input type="text" value="DC2TL IK2QIN -15"/>	<input type="radio"/>	<input type="button" value="Tx 2"/>	
<input type="text" value="DC2TL IK2QIN R-15"/>	<input type="radio"/>	<input type="button" value="Tx 3"/>	
<input type="text" value="DC2TL IK2QIN RR73"/>	<input checked="" type="radio"/>	<input type="button" value="Tx 4"/>	
<input type="text" value="DC2TL IK2QIN 73"/>	<input type="radio"/>	<input type="button" value="Tx 5"/>	
<input type="text" value="CQ IK2QIN JN45"/>	<input type="radio"/>	<input type="button" value="Tx 6"/>	

0/100 WD:6m

Band Activity

UTC	dB	DT	Freq	Message
122145	5	0.1	1630	~ IK3OCD DL1YCL 73
122145	-18	-0.0	1718	~ UR5LCV EBRAC 73
122145	-15	0.6	1776	~ CQ ES4NY K038
122145	-16	0.1	1838	~ DM7FK EA1SD -12
122145	-20	0.2	2011	~ R7MC JS6TKM RRR
122145	-22	0.1	765	~ EA3GOM UWSSM KN28
122145	-1	0.3	1619	~ M0XXJ EW1P -06
122200	-4	0.1	1432	~ EW1P DD3VM J053
122200	-15	0.1	488	~ DH4SBM 4Z4DX -08
122200	10	-0.1	660	
122200	-17	1.4	852	
122200	-22	0.2	943	
122200	-18	0.3	1044	
122200	-9	0.1	1191	
122200	-10	0.3	1300	
122200	-13	0.9	1357	
122200	-9	0.1	1496	
122200	6	0.2	1600	
122200	-15	-0.0	1879	
122200	-1	0.1	1974	
122200	-20			
122200	-17	-0.9		

Message

UTC	dB	DT	Freq	Message
122200	-4	0.1	1432	~ EW1P DD3VM J053
122200	-9	-0.6	1430	~ CQ NM03TV I075

Control Panel

17m **18,100,000** Tx over/lat

DX Call DX Grid Tx 1435 Hz Tx → Rx

LU7DSY Rx 1435 Hz Rx → Tx

LookUp Add Report -15

2018 set 02
12:22:25

Receiving PTT

Wide Graph

Controls 600 800 1000 1200 1400 1600 1800 2000

12:22:15 17m

Bin/Rx/Flt 3 Start 400 Hz Palette Adjust... Flatten Ref Spec Spec 30 %

J765 2500 J19 N Avg 1 Default Cumulative Smooth 1

14:22 02/09/2018

BAFFATO TX PARI

POSIZIONE
CURSORE CON
MOUSE TASTO
DX E CONF
TASTO SX

BAFFATO BLOCCA
SU FRQ IL TX

WSJT-X v1.8.0 by K1JT

File | Configurations | New | Mode | Decode | Save | Tools | Help

Band Activity					Rx Frequency				
UTC	dB	DT	Freq	Message	UTC	dB	DT	Freq	Message
123130	-13	2.0	945	~ JF1WCK SP7IWA K002	122200	-4	0.1	1432	~ Ew1P DD3VM J053
123130	-16	0.3	1045	~ A41ZZ DU1AVC -14	122200	-9	-0.6	1430	~ CQ MM0JTV I075
123130	-8	0.2	1109	~ CQ W5RSC EM70	122230	-1	0.1	1432	~ Ew1P DD3VM J053
123130	-13	0.2	1191	~ CQ R80D N014	122900	-9	-0.1	871	~ CQ MW1CFN I073
123130	-15	0.4	1299	~ UR5LCV PY2CAT RRR	122930	4	0.1	870	~ CQ BX2AFO PL05
123130	-1	0.9	1381	~ CQ EA4CRP IM68	122930	-5	-0.1	871	~ CQ MW1CFN I073
123130	-21	0.1	1719	~ EB8AC DG3AWN 73	123000	-2	0.1	870	~ CQ BX2AFO PL05
123130	-6	0.3	1780	~ TNX 73 DIETER	123015	-3	0.3	870	~ BX2AFO DM5HF J043
123130	-4	0.1	1975	~ CQ SV5DKL KM46	123030	-1	0.1	870	~ IK8YFU BX2AFO -16
123130	1	0.1	2076	~ ZB2IF A65DR LL75	123100	-3	0.1	871	~ IK8YFU BX2AFO RRR
123130	-11	1.4	851	~ R6AK EA7HS -17	123130	-4	0.1	871	~ IK8YFU BX2AFO 73
123130	-16	0.1	1994	~ CQ SP1KZX J057					
123145	-7	0.1	488	~ CQ 4Z4DX KM72					
123145	-4	0.1	569	~ GOYCE ZB2IF RRR					
123145	1	0.8	659	~ DU1AVC A41ZZ RRR					
123145	-9	0.1	798	~ CQ EA588 IM98					
123145	-8	2.5	945	~ OE6GND C03SAR 73					
123145	-20	0.1	1171	~ CQ DL6BST J050					
123145	4	0.1	1356	~ DG9MDM EA9AF -09					
123145	-18	-0.0	1719	~ DG3AWN EBBAC 73					
123145	-10	0.6	1775	~ CQ ES4NY K038					
123145	-15	0.1	1837	~ DU1AVC EA1BD IN83					
123145	-15	0.1	831	~ CQ RX9DJ M006					

Log QSO Stop Monitor Erase Decode Enable Tx Halt Tx Tune Menu

17m 18,100 000 Tx every 1st
 DX Call DX Grid Tx 864 Hz Tx ← Rx
 LU7DSY Rx 864 Hz Rx → Tx
 Hold Tx Freq Report 1-15 Auto Seq Call list NA VHF Contest

Calling CQ Answering CQ
 CQ Grid
 dB R+dB
 RRR 73
 CQ J0JQDN JMS Gen msg
 CQ DX J0JQDN Free msg

ERASE 1 CLICK CANCELLA
 FINESTRA DX .. 2 CLICK TUTTO

WSJT-X - Wide Graph

Control: 800 800 1000 1200 1400 1600 1800 2000

123130

Bin/Freq 1 Start 400 Hz Palette Adjust... Flatten Ref Spec Spec 30 %
 7765 2500 379 N Avg 1 Default Cumulative Smooth 1

Band Activity

UTC	dB	DT	Freq	Message
123130	-13	2.0	945	~ JF1WCK SP7IWA K002
123130	-16	0.3	1045	~ A41ZZ DU1AVC -14
123130	-8	0.2	1109	~ CQ W5RSC FM70
123130	-13	0.2	1191	~ CQ R80D N014
123130	-15	0.4	1299	~ UR5LCV PY2CAT RRR
123130	-1	0.9	1381	~ CQ EA4CRP IM68
123130	-21	0.1	1719	~ EB8AC DG3AWN 73
123130	-6	0.3	1780	~ TNX 73 DIETER
123130	-4	0.1	1975	~ CQ SV5DKL KM46
123130	1	0.1	2076	~ ZB2IF A65DR LL75
123130	-11	1.4	851	~ R6AK EA7HS -17
123130	-16	0.1	1994	~ CQ SP1KZX J057
123145	-7	0.1	488	~ CQ 4Z4DX KM72
123145	-4	0.1	569	~ G0VCE ZB2IF RRR
123145	1	0.8	659	~ DU1AVC A41ZZ RRR
123145	-9	0.1	798	~ CQ EA5BB IM98
123145	-8	2.5	945	~ OE6GND C03SAR 73
123145	-20	0.1	1171	~ CQ DL6BST J050
123145	4	0.1	1356	~ DG9MDM EA9AF -09
123145	-18	0.0	1719	~ DG3AWN EB8AC 73
123145	-10	0.6	1775	~ CQ ES4NY K038
123145	-15	0.1	1837	~ DU1AVC EA1BD IN83
123145	-15	0.1	831	~ CQ RX9DJ M006

Rx Frequency

UTC	dB	DT	Freq	Message
122200	-4	0.1	1432	~ Ew1P DD3VM J053
122200	-9	-0.6	1430	~ CQ MM0JTV I075
122230	-1	0.1	1432	~ Ew1P DD3VM J053
122900	-9	-0.1	871	~ CQ M41CFN I073
122930	4	0.1	870	~ CQ BX2AFO PLO5
122930	-5	-0.1	871	~ CQ M41CFN I073
123000	-2	0.1	870	~ CQ BX2AFO PLO5
123015	-3	0.3	870	~ BX2AFO DM5HF J043
123030	-1	0.1	870	~ IK8YFU BX2AFO -16
123100	-3	0.1	871	~ IK8YFU BX2AFO RRR
123130	-4	0.1	871	~ IK8YFU BX2AFO 73

OK PER ANDARE IN TX

Log QSO Stop Monitor Erase Decode Enable Tx Halt Tx Tune

12m 18,100 000 Tx even/3st

DX Call DX Grid Tx 864 Hz Rx 864 Hz Tx ← Rx Rx → Tx Hold Tx Freq

LU7DSY Report 1-15 Auto Seq Call list NA VHF Contest

2018 set 02 12:32:01

Calling CQ Answering CQ

CQ	Grid
dB	R+dB
RRR	73

CQ DKQDN JN45 Gen msg
CQ DA DKQDN Free msg

Receiving FT8

WSJT-X Wide Graph

Control 600 800 1000 1200 1400 1600 1800

12:31:45

Brq/pxl 1 Start 400 Hz Palette Adjust... Flatten Ref Spec

3765 2500 379 N Avg 1 Default Cumulative

Band Activity

UTC	dB	DT	Freq	Message
123130	-13	2.0	945	~ JF1WCK SP7IWA K002
123130	-16	0.3	1045	~ A41ZZ DU1AVC -14
123130	-8	0.2	1109	~ CQ W5RSC FM70
123130	-13	0.2	1191	~ CQ R80D N014
123130	-15	0.4	1299	~ UR5LCV PY2CAT RRR
123130	-1	0.9	1381	~ CQ EA4CRP IM68
123130	-21	0.1	1719	~ EB8AC DG3AWN 73
123130	-6	0.3	1780	~ TNX 73 DIETER
123130	-4	0.1	1975	~ CQ SV5DKL KM46
123130	1	0.1	2076	~ ZB2IF A65DR LL75
123130	-11	1.4	851	~ R6AK EA7HS -17
123130	-16	0.1	1994	~ CQ SP1KZX J057
123145	-7	0.1	488	~ CQ 4Z4DX KM72
123145	-4	0.1	569	~ G0VCE ZB2IF RRR
123145	1	0.8	659	~ DU1AVC A41ZZ RRR
123145	-9	0.1	798	~ CQ EA5BB IM98
123145	-8	2.5	945	~ OE6GND C03SAR 73
123145	-20	0.1	1171	~ CQ DL6RST J050
123145	4	0.1	1356	~ DG9MDM EA9AF -09
123145	-18	0.0	1719	~ DG3AWN EB8AC 73
123145	-10	0.6	1775	~ CQ E54NY K038
123145	-15	0.1	1837	~ DU1AVC EA1BD IN83
123145	-15	0.1	831	~ CQ RX9DJ M006

Rx Frequency

UTC	dB	DT	Freq	Message
122200	-4	0.1	1432	~ Ew1P DD3VM J053
122200	-9	-0.6	1430	~ CQ MM0JTV I075
122230	-1	0.1	1432	~ Ew1P DD3VM J053
122900	-9	-0.1	871	~ CQ M41CFN I073
122930	4	0.1	870	~ CQ BX2AFO PLO5
122930	-5	-0.1	871	~ CQ M41CFN I073
123000	-2	0.1	870	~ CQ BX2AFO PLO5
123015	-3	0.3	870	~ BX2AFO DM5HF J043
123030	-1	0.1	870	~ IK8YFU BX2AFO -16
123100	-3	0.1	871	~ IK8YFU BX2AFO RRR
123130	-4	0.1	871	~ IK8YFU BX2AFO 73

OK PER
BLOCCO TX

Log QSO Stop Monitor Erase Decode Enable Tx Halt Tx Tune

12m 18,100 000 Tx even/3st

DX Call DX Grid Tx 864 Hz Tx ← Rx

LUFDSY Rx 864 Hz Rx ← Tx

Lookup Add Report 1-15 Hold Tx Freq

Auto Seq Call list

NA VHF Contest

Calling CQ	Answering CQ
CQ	Grid
dB	R+dB
RRR	73

CQ DKQDN JN45 Gen msg

CQ DA DKQDN Free msg

Receiving FT8

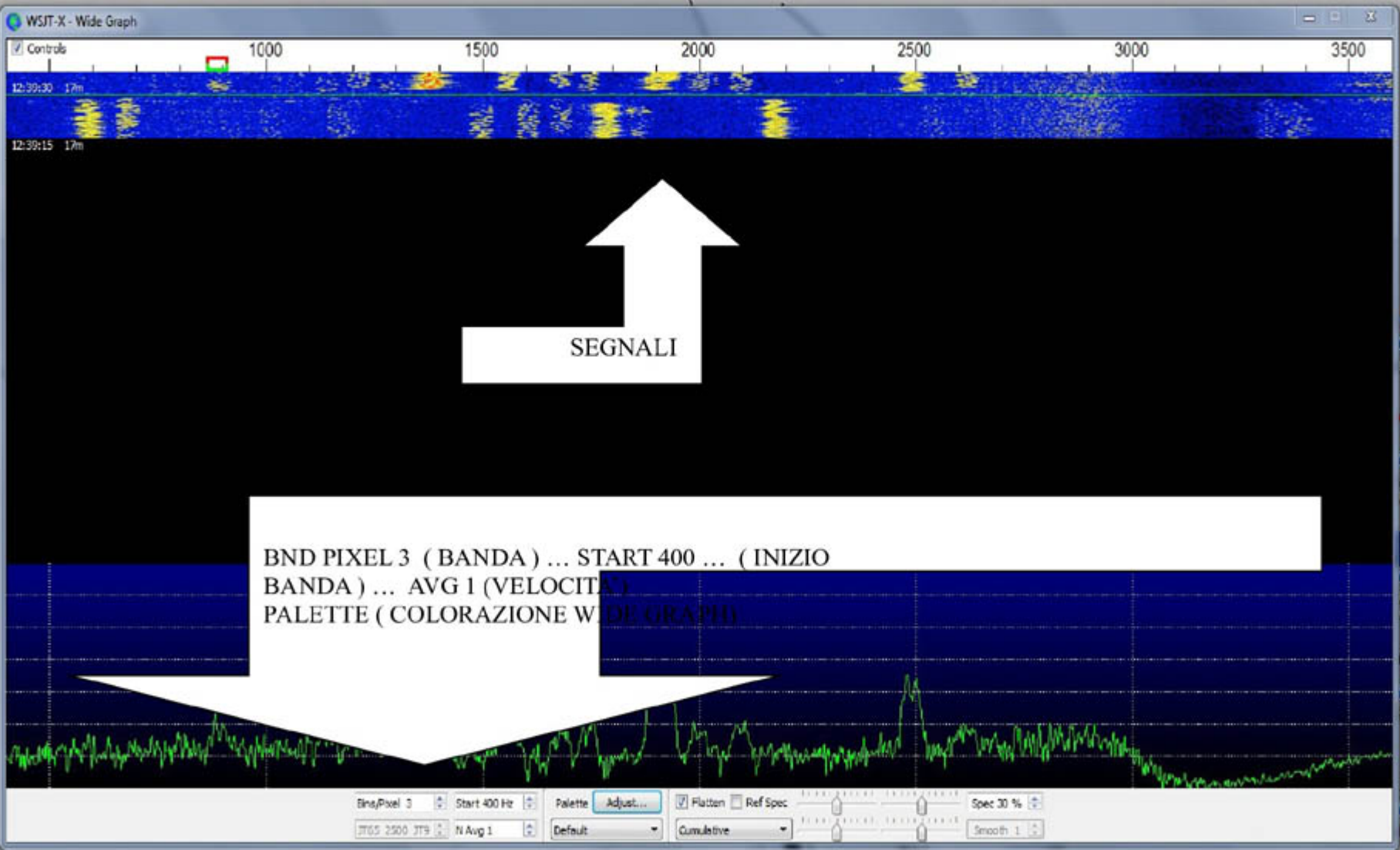
WSJT-X Wide Graph

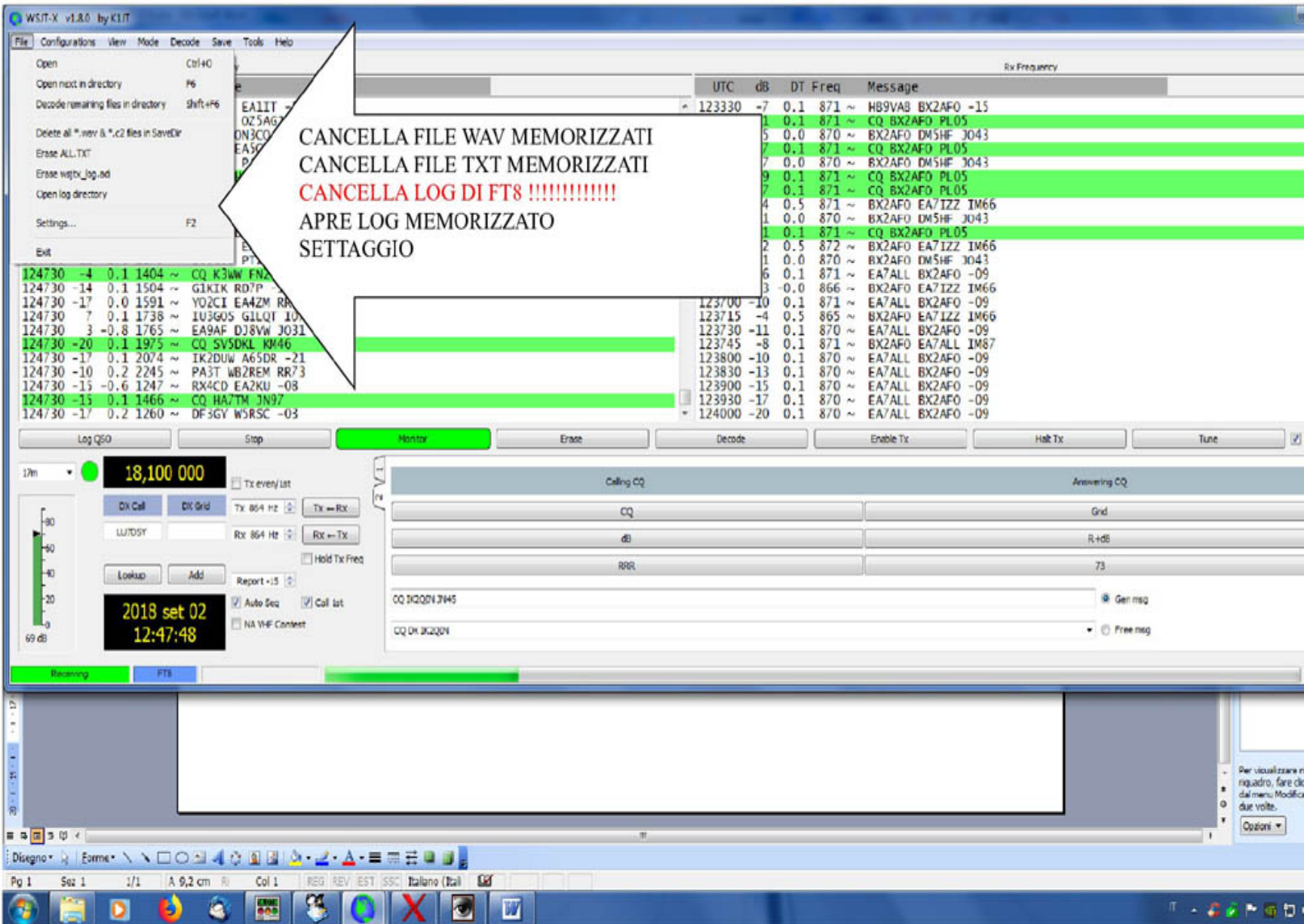
Control 600 800 1000 1200 1400 1600 1800

12:31:01

Brq/Prxel 3 Start 400 Hz Palette Adjust... Flatten Ref Spec

3765 2500 379 N Avg 1 Default Cumulative





CANCELLA FILE WAV MEMORIZZATI
CANCELLA FILE TXT MEMORIZZATI
CANCELLA LOG DI FT8 !!!!!!!!!!!!!!!
APRE LOG MEMORIZZATO
SETTAGGIO

- Open Ctrl+O
- Open next in directory F6
- Decode remaining files in directory Shift+F6
- Delete all *.wav & *.c2 files in SaveDir
- Erase ALL.TXT
- Erase wav_tx_log.od
- Open log directory
- Settings... F2
- Exit

UTC	dB	DT	Freq	Message
124730	-4	0.1	1404	~ CQ K3WW FN2
124730	-14	0.1	1504	~ G1KIK RD7P
124730	-17	0.0	1591	~ YO2CI EA4ZM RA
124730	7	0.1	1738	~ IU3G0S G1LQT 10
124730	3	-0.8	1765	~ EA9AF DJ8VW JO31
124730	-20	0.1	1975	~ CQ SV5DKL KM46
124730	-17	0.1	2074	~ IK2DUW A65DR -21
124730	-10	0.2	2245	~ PA3T WB2REM RR73
124730	-15	-0.6	1247	~ RX4CD EA2KU -08
124730	-15	0.1	1466	~ CQ HA7TM JN9Z
124730	-17	0.2	1260	~ DF3GY W5RSC -03
123330	-7	0.1	871	~ HB9VAB BX2AFO -15
123700	-10	0.1	871	~ EA7ALL BX2AFO -09
123715	-4	0.5	865	~ BX2AFO EA7IZZ IM66
123730	-11	0.1	870	~ EA7ALL BX2AFO -09
123745	-8	0.1	871	~ BX2AFO EA7ALL IM87
123800	-10	0.1	870	~ EA7ALL BX2AFO -09
123830	-13	0.1	870	~ EA7ALL BX2AFO -09
123900	-15	0.1	870	~ EA7ALL BX2AFO -09
123930	-17	0.1	870	~ EA7ALL BX2AFO -09
124000	-20	0.1	870	~ EA7ALL BX2AFO -09

Log QSO Stop Monitor Erase Decode Enable Tx Halt Tx Tune

17m **18,100 000** Tx every lat **69 dB**

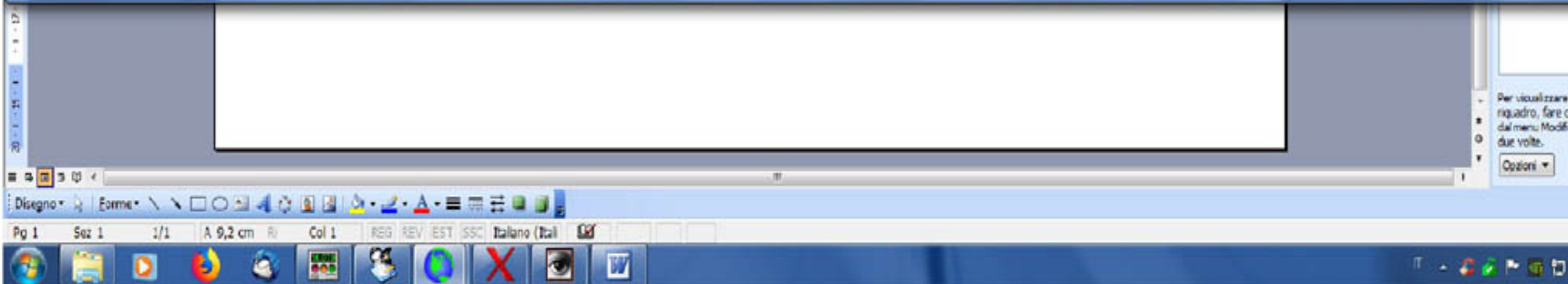
2018 set 02
12:47:48

Tx every lat
 Hold Tx Free
 Auto Seq
 Col list
 NA VHF Contest

Calling CQ: CQ, dB, RRR, CQ JQ0QI JN45, CQ DK JQ2QI

Answering CQ: Grid, R+dB, 73

Gen msg, Free msg



JT ALERT

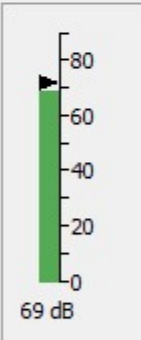
PROGRAMMA COMPLEMENTARE

Log QSO Stop Monitor Erase Decode Enable Tx Halt Tx Tune

160m

0,000 000

Tx even/1st



DX Call EA7DT
 DX Grid IM76
 Az: 235 1543 km
 Tx 1400 Hz
 Rx 1400 Hz
 Tx ← Rx
 Rx ← Tx
 Lookup Add
 Report -15

Hold Tx Freq

2018 set 08
 12:05:49

Auto Seq
 Call 1st
 NA VHF Contest

Calling CQ	Answering CQ
CQ	Grid
dB	R+dB
RRR	73
<input type="text"/> <input checked="" type="radio"/> Gen msg	
<input type="text"/> CQ DX IK2QIN <input type="radio"/> Free msg	




FT8

JTAlertX 2.10.14 IK2QIN [~.,??m,HRD5,F,#1] Alerts Settings View Sound OFF [?] 160 80 60 40 30 20 17 15 12 10 6

EA7DT QSO B4
 Name QTH Grid Comments PWR Time Country Name State CQ ITU Co



- Wanted Callsigns ...
- Wanted US States ...
- Wanted DXCCs ...
- Wanted Continents ...
- Wanted CQ Zones ...
- Wanted Grids ...
- Wanted Prefixes ...
- Wanted CQ Marathon ...
- Ignored Callsigns ...

-  Scan Log and Rebuild ...
- Manage Settings ... F11
-  Test Sound Card
-  Exit JTAAlert

JTAAlertX 2.10.14 IK2QIN [~,,,m,HRD5,F,#1] (Updates!) | Alerts | Settings | View | Sound OFF | ? | 160 80 60 40 30 20 17 15 12 10 6

EA7DT
QSO B4

<input type="text"/>	<input type="text"/>	IM76	<input type="text"/>	<input type="text"/>	1205	Spain	<input type="text"/>	14	37	EU	<input checked="" type="checkbox"/>	Q
Name	QTH	Grid	Comments	PWR	Time	Country Name	State	CQ	ITU	Cont.	QSL	

Alerts

- Own Call
- CQ and QRZ
- + Wanted Prefix
- + Wanted CQ Marathon
- + Wanted US State
- + Wanted DXCC
- + Wanted Continent
- + Wanted CQ Zone
- + Wanted Grid
- + Miscellaneous Alerts
 - Alerts Priority
 - Worked B4
 - LoTW / eQSL(AG) Flags
 - Filters
- + Logging
- + Applications
- + Window
- + Miscellaneous
- + Web Services
 - Scan Log and Rebuild
 - Sound Card
 - Station Callsign
 - Program Updates
 - About

Quick Enable / Disable Audio and Visual Alerts

- | | |
|---|--|
| ON <input checked="" type="checkbox"/> Own Call | ON <input checked="" type="checkbox"/> CQ and QRZ |
| OFF <input type="checkbox"/> Wanted Callsign | OFF <input type="checkbox"/> Wanted Prefix |
| ON <input checked="" type="checkbox"/> Wanted US State | OFF <input type="checkbox"/> Wanted Grid |
| ON <input checked="" type="checkbox"/> Wanted DXCC | ON <input checked="" type="checkbox"/> Wanted Continent |
| OFF <input type="checkbox"/> Wanted CQ Zone | OFF <input type="checkbox"/> Wanted CQ Marathon |
| OFF <input type="checkbox"/> Decode Keywords | OFF <input type="checkbox"/> User Defined Alert |

Quick Enable / Disable Audio only Alerts

- | | |
|--|---|
| OFF <input type="checkbox"/> Out of Shack | OFF <input type="checkbox"/> End of TX/RX Period |
| OFF <input type="checkbox"/> Start of TX Period | OFF <input type="checkbox"/> Rx Frequency |
| OFF <input type="checkbox"/> TX Watchdog | |

Quick Enable / Disable Visual only Alerts

- | | |
|--|---|
| OFF <input type="checkbox"/> LoTW Stripe/Flag | ON <input checked="" type="checkbox"/> Band Activity Display |
| OFF <input type="checkbox"/> Ignored Callsign | OFF <input type="checkbox"/> eQSL(AG) Stripe/Flag |

Decoded Callsign Data Tooltip

- | | |
|--|---|
| ON <input checked="" type="checkbox"/> Enable | ON <input checked="" type="checkbox"/> Show all triggered Alerts |
| OFF <input type="checkbox"/> Show distance in Miles | |

- Alerts
 - Own Call
 - CQ and QRZ
 - Wanted Prefix
 - Any Band
 - Wanted CQ Marathon
 - Wanted US State
 - Any Band
 - Wanted DXCC
 - Wanted Continent
 - Wanted CQ Zone
 - Wanted Grid
 - Miscellaneous Alerts
 - Alerts Priority
 - Worked B4
 - LoTW / eQSL(AG) Flags
 - Filters
- Logging
- Applications
- Window
- Miscellaneous
- Web Services
 - Scan Log and Rebuild
 - Sound Card
 - Station Callsign
 - Program Updates
 - About

Check All

Any Band

UnCheck All

<input type="checkbox"/> AK	<input type="checkbox"/> AL	<input type="checkbox"/> AR	<input type="checkbox"/> AZ	<input type="checkbox"/> CA	<input type="checkbox"/> CO	<input type="checkbox"/> CT	<input type="checkbox"/> DE	<input type="checkbox"/> FL	<input type="checkbox"/> GA
<input type="checkbox"/> HI	<input type="checkbox"/> IA	<input type="checkbox"/> ID	<input type="checkbox"/> IL	<input type="checkbox"/> IN	<input type="checkbox"/> KS	<input type="checkbox"/> KY	<input type="checkbox"/> LA	<input type="checkbox"/> MA	<input type="checkbox"/> MD
<input type="checkbox"/> ME	<input type="checkbox"/> MI	<input type="checkbox"/> MN	<input type="checkbox"/> MO	<input type="checkbox"/> MS	<input type="checkbox"/> MT	<input type="checkbox"/> NC	<input type="checkbox"/> ND	<input type="checkbox"/> NE	<input type="checkbox"/> NH
<input type="checkbox"/> NJ	<input type="checkbox"/> NM	<input checked="" type="checkbox"/> NV	<input type="checkbox"/> NY	<input type="checkbox"/> OH	<input type="checkbox"/> OK	<input type="checkbox"/> OR	<input type="checkbox"/> PA	<input type="checkbox"/> RI	<input type="checkbox"/> SC
<input checked="" type="checkbox"/> SD	<input type="checkbox"/> TN	<input type="checkbox"/> TX	<input type="checkbox"/> UT	<input type="checkbox"/> VA	<input type="checkbox"/> VT	<input type="checkbox"/> WA	<input type="checkbox"/> WI	<input type="checkbox"/> WV	<input type="checkbox"/> WY

Click the checkbox for each wanted State.

2 of 50 States Wanted

FT8

Checkbox Display Order

By State Code By State Name

Tracking

Any Band By Individual Mode (JT9, JT65, FT8)

Band Select

160	80	60	40	30	20	17	15	12	10	6	2
<input type="checkbox"/>	<input type="checkbox"/>	<input type="checkbox"/>	<input type="checkbox"/>	<input type="checkbox"/>	<input type="checkbox"/>	<input type="checkbox"/>	<input type="checkbox"/>	<input type="checkbox"/>	<input type="checkbox"/>	<input type="checkbox"/>	<input type="checkbox"/>

- Alerts
 - Own Call
 - CQ and QRZ
 - Wanted Prefix
 - Any Band
 - Wanted CQ Marathon
 - Wanted US State
 - Any Band
 - Wanted DXCC
 - Wanted Continent
 - Wanted CQ Zone
 - Wanted Grid
 - Miscellaneous Alerts
 - Alerts Priority
 - Worked B4
 - LoTW / eQSL(AG) Flags
 - Filters
- Logging**
 - Last QSO API
 - Log B4 Database
 - Standard ADIF File
 - DXLab DXKeeper
 - HRD V5/V6**
 - Log4OM
 - ACLog
 - MixW (CSV File)
- Applications
- Window

Logging Enabled - HRD V5/V6

Confirmed / Worked Bands Display

Confirmation Card eQSL LoTW

Logged Frequency

QRG only QRG + DF (true RF)

Logging Options

- Log without submode [Mode = JT65A or JT9-1]
- Log full name returned from XML lookups
- Log full QTH returned from XML lookups
- Log propagation data, SFI, A-index and K-Index
- Mark QSO upload to LoTW as "Requested"
- Mark QSO upload to eQSL as "Requested"
- Remember QSL Request setting across logging and restarts
- Restore Comments from last JTAlert session
- Don't log value in JTAlert Time field
- Log WSJT-X Comments to QSL Message field
- Log Address returned from an XML or previous QSO lookup

- Alerts
 - Own Call
 - CQ and QRZ
 - Wanted Prefix
 - Any Band
 - Wanted CQ Marathon
 - Wanted US State
 - Any Band
 - Wanted DXCC
 - Wanted Continent
 - Wanted CQ Zone
 - Wanted Grid
 - Miscellaneous Alerts
 - Alerts Priority
 - Worked B4
 - LoTW / eQSL(AG) Flags
 - Filters
- Logging
 - Last QSO API
 - Log B4 Database
 - Standard ADIF File
 - DXLab DXKeeper
 - HRD V5/V6**
 - Log4OM
 - ACLog
 - MixW (CSV File)
- Applications
- Window

Enable HRD V5/V6 Logging

HRD Version

Version 6.3 or later Version 5 or pre 6.3

Version 6.3 or later

Log Name

PC IPv4 Address

Log Description

Log DSN Name

Log Username Log Password

ODBC Driver

ODBC Description

Version 5 or pre 6.3

This is a Version 5 Log

DSN Name

ODBC Driver

ODBC Description

- [-] Alerts
 - ... Own Call
 - ... CQ and QRZ
 - [-] Wanted Prefix
 - ... Any Band
 - [-] Wanted CQ Marathon
 - [-] Wanted US State
 - ... Any Band
 - [-] Wanted DXCC
 - [-] Wanted Continent
 - [-] Wanted CQ Zone
 - [-] Wanted Grid
 - [-] Miscellaneous Alerts
 - ... Alerts Priority
 - ... Worked B4
 - ... LoTW / eQSL(AG) Flags
 - ... Filters
- [-] Logging
 - ... Last QSO API
 - ... Log B4 Database
 - Standard ADIF File
 - [-] DXLab DXKeeper
 - HRD V5/V6
 - ... Log4OM
 - ... ACLog
 - ... MixW (CSV File)
- [-] Applications
- [-] Window

Enable Standard ADIF File Logging

If your preferred logger is not supported, it is best to select the ADIF log, as it will record additional QSO data (Name, QTH, Grid, DXCC, State, ITU zone, CQ zone and QSL request), that can be imported by your logger at a future time. Worked B4 checking will use this log.

Important: This IS NOT the adif file produced by WSJT-X (wsjtx_log.adif) or JT65-HF (jt65hf_log.adif). If you select the WSJT-X or JT65-HF log file, logging will be disabled and a warning message generated.

2

Log File

Create New

Select

Help

OK

Cancel

Save

- Own Call
- CQ and QRZ
- Wanted Prefix
- Wanted CQ Marathon
- Wanted US State
- Wanted DXCC
- Wanted Continent
- Wanted CQ Zone
- Wanted Grid
- Miscellaneous Alerts
- Alerts Priority
- Worked B4
- LoTW / eQSL(AG) Flags
- Filters
- Logging
- Applications
 - Auto-Start
 - WSJT-X
 - DXLab Suite
- Window
- Miscellaneous
- Web Services
- Scan Log and Rebuild
- Sound Card
- Station Callsign
- Program Updates
- About

#1	<input checked="" type="checkbox"/> Start	C:\WSJT\wsjtx\bin\wsjtx.exe	Select
	<input type="checkbox"/> Close	1500 Delay ms	Parameters Clear
#2	<input type="checkbox"/> Start		Select
	<input type="checkbox"/> Close	1000 Delay ms	Parameters Clear
#3	<input type="checkbox"/> Start		Select
	<input type="checkbox"/> Close	1000 Delay ms	Parameters Clear
#4	<input type="checkbox"/> Start		Select
	<input type="checkbox"/> Close	1000 Delay ms	Parameters Clear
#5	<input type="checkbox"/> Start		Select
	<input type="checkbox"/> Close	1000 Delay ms	Parameters Clear
#6	<input type="checkbox"/> Start		Select
	<input type="checkbox"/> Close	1000 Delay ms	Parameters Clear

- [-] Alerts
 - ... Own Call
 - ... CQ and QRZ
 - + Wanted Prefix
 - + Wanted CQ Marathon
 - + Wanted US State
 - + Wanted DXCC
 - + Wanted Continent
 - + Wanted CQ Zone
 - + Wanted Grid
 - + Miscellaneous Alerts
 - ... Alerts Priority
 - ... Worked B4
 - ... LoTW / eQSL(AG) Flags
 - ... Filters
- + Logging
- + Applications
- [-] Window
 - ... Macros (Free-Text)
 - ... Decodes History
 - ... Callsign QSO History
 - ... Band Activity Display
 - ... Popup Windows
- + Miscellaneous
- + Web Services
 - ... Scan Log and Rebuild
 - ... Sound Card
 - ... Station Callsign

JTAlertX Titlebar - Win7 Aero and Win8

Custom Title Color

Active Title Color

No Font Glow

Inactive Title Color

Extended Display

Show Log Fields

Show Bands Confirmed/Worked

Show DXCC Names Below Callsigns

Show dB (DXCC Name)

Decoded Callsigns Display

3 Number of Callsign Lines

8 Maximum per line to display (6 or 7 are best for screens with large fonts).

Auto adjust font to reduce cropping of Callsign text

Clear Decoded Callsigns on Band change

Window Position

JTAlert position independent of other windows

JTAlert always On-Top of other windows

Dock JTAlert window to top or bottom of WSJT-X window

Top of window

Bottom of window

- [-] Alerts
 - Own Call
 - CQ and QRZ
 - + Wanted Prefix
 - + Wanted CQ Marathon
 - + Wanted US State
 - + Wanted DXCC
 - + Wanted Continent
 - + Wanted CQ Zone
 - + Wanted Grid
 - + Miscellaneous Alerts
 - Alerts Priority
 - Worked B4
 - LoTW / eQSL(AG) Flags
 - Filters
- + Logging
- + Applications
- [-] Window
 - Macros (Free-Text)
 - Decodes History
 - Callsign QSO History
 - Band Activity Display
 - Popup Windows**
- + Miscellaneous
- + Web Services
 - Scan Log and Rebuild
 - Sound Card
 - Station Callsign

Popup Windows

- Show Log QSO to Logger Success
- Show Log QSO to Logger Failure

Visual Effects

- Slide effect on popup windows

Tooltips

- Don't use Balloon Style for tooltips

- Alerts
- Logging
- Applications
- Window
- Miscellaneous
 - Hot Keys
 - Performance**
- Web Services
- Scan Log and Rebuild
- Sound Card
- Station Callsign
- Program Updates
- About

Check QSO Log Record

3 secs

Delay time after QSO logged to check record written to log file. On slow decoding PCs it may be necessary to increase this value if JTAlert incorrectly reports log failure.

ADIF SQLite Cache File

Only check this option if Support has recommended the setting.

Delete ADIF Cache file on JTAlert startup

Database Query Cache

Checking this option may have a significant negative impact on database lookup times, especially on busy bands with several decodes requiring processing.

Note: Only check this option if Support has recommended the setting.

Do not cache database query results in memory

- Alerts
- Logging
- Applications
- Window
- Miscellaneous
- Web Services
 - TCPIP Network Ports
 - Online Logbooks**
 - Online XML Callbooks
- Scan Log and Rebuild
- Sound Card
- Station Callsign
- Program Updates
- About

QRZ.com

Enable

API Key

HRDLog.net

Enable

Callsign

Code

HamQTH.com

Enable

Callsign

Username

Password

eQSL.cc

Enable

Callsign

Password

QTH Nickname

ClubLog.org

Enable

Callsign

Password

eMail Address

EA7DT

QSO B4

- Alerts
- Logging
- Applications
- Window
- Miscellaneous
- Web Services
 - TCPIP Network Ports
 - Online Logbooks
 - Online XML Callbooks
- Scan Log and Rebuild
- Sound Card
- Station Callsign**
- Program Updates
- About

Callsign

The Station Callsign is recorded with each logged QSO and should be the same as setup in JT65-HF and WSJT-X. It is also used when sending spots to HamSpots.net and when sending text messages to other JTAlert users.

Station Callsign

IK2QIN

Change

Station Location

CQ Zone 15

Gridsquare JN45NL

ITU Zone 28

Calculate Lat/Lon

Latitude 45.479167




Longitude 9.125

Desktop Shortcut


JTAlert can be started to use a different callsign than the current Station callsign. This can be used for guest operators. A suitable shortcut will be created on the Windows Desktop. Each callsign will have independent settings and wanted lists.






Additional Callsign

Create Shortcuts

- Halt WSJT-X TX Alt+H
- Out of Shack Alt+S
- Own Call
- CQ and QRZ
- Wanted Callsign
- Wanted US State
- Wanted DXCC
- Wanted Continent
- Wanted CQ Zone
- Wanted Grid
- Wanted Prefix
- Wanted CQ Marathon (2018)
- Decode Keywords
- End of TX/RX period
- Start of WSJT-X TX period
- Rx Frequency
- TX Watchdog
- User Defined Alert
-  Filters ▶
- Show LoTW flags
- Show eQSL flags
-  Decoded Callsign Data Tooltip ▶
-  Exit JTAAlert






- Generate alerts for CQ only Callsigns
- Show only Callsigns generating alerts
- Do not show Worked Before (B4) Callsigns
- Do not show Ignored Callsigns
- No QSL Filters, pass all Alerts
- LoTW member
- eQSL(AG) member
- LoTW OR eQSL(AG) member
- LoTW AND eQSL(AG) member
- User Defined Filter

 JTAAlertX 2.10.14 IK2QIN [~,,,m,HRD5,F,#1] (Updates!) | Alerts | Settings | View | Sound OFF | ?

-  Dock to WSJT-X Window ▶
- Show DXCC Names
-  Callsign Display Lines [3] ▶
-  Callsign Display Slots [8] ▶
- Show Log Fields
-  Show Confirmed Bands ▶
- Show Titlebar Band Activity
- Alert Types Summary Window F1
- Callsign History Window F3
- Text Message Window F5
- Decodes History Window F9
- Band Activity Window F2
-  Band Activity Rx Continent Filter ▶
- Open Browser to HamSpots.net F7
- Macros Window F6

[~,???m,HRD5,F,#1] (Updates!) | Alerts | Settings | View | Sound OFF | ? |
160 80 60 40 30 20 17 15 12 10 6

QTH Grid Comments PWR Time Country Name State CQ ITU Cont. QSL

-  Dock to WSJT-X Window ▶
- Show DXCC Names
-  Callsign Display Lines [3] ▶
-  Callsign Display Slots [8] ▶
- Show Log Fields
-  Show Confirmed Bands ▶
- Show Titlebar Band Activity
- Alert Types Summary Window F1
- Callsign History Window F3**
- Text Message Window F5
- Decodes History Window F9
- Band Activity Window F2
-  Band Activity Rx Continent Filter ▶
- Open Browser to HamSpots.net F7
- Macros Window F6

QSO History

EA7DT : FT8 QSOs - 1 on 1 band

160m		17m	
80m		15m	
60m		12m	Worked
40m		10m	
30m		6m	
20m		2m	

(Last QSO : 12m FT8, 2018-SEP-05)

[~.,???m,HRD5,F,#1] (Updates!) | Alerts | Settings | View | Sound OFF | ? | 160 80 60 40 30 20 17 15 12 10 6

QTH	IM76	Grid	Comments	PWR	Time	1205	Country Name	Spain	State	CQ	14	ITU	37	Cont.	EU	<input checked="" type="checkbox"/>	QSL	<input checked="" type="checkbox"/>
-----	------	------	----------	-----	------	------	--------------	-------	-------	----	----	-----	----	-------	----	-------------------------------------	-----	-------------------------------------

QSO History

EA7DT : FT8 QSOs - 1 on 1 band

160m		17m	
80m		15m	
60m		12m	Worked
40m		10m	
30m		6m	
20m		2m	

(Last QSO : 12m FT8, 2018-SEP-05)

JTAlertX : Alert Types

Alert Types

- ON** Own Call
- ON** CQ and QRZ
- OFF** Wanted Callsign
- OFF** Wanted Prefix
- OFF** Wanted Grid
- ON** Wanted US State
- ON** Wanted DXCC
- OFF** Wanted CQ Zone
- ON** Wanted Continent
- OFF** Wanted CQ Marathon
- OFF** Ignored Callsign
- OFF** Decode Keywords

Worked B4

No Alert

2QIN [~,???m,HRD5,F,#1] (Updates!) | Alerts | Settings | View | Sound OFF | ? | 160 80 60 40 30 20 17 15 12 10 6

IM76 | 1205 | Spain | 14 | 37 | EU | Q

name | QTH | Grid | Comments | PWR | Time | Country Name | State | CQ | ITU | Cont. | QSL

- OFF **Wanted Callsign**
- OFF **Wanted Prefix**
- OFF **Wanted Grid**
- ON **Wanted US State**
- ON **Wanted DXCC**
- OFF **Wanted CQ Zone**
- ON **Wanted Continent**

- Dock to WSJT-X Window ▶
- Show DXCC Names
- Callsign Display Lines [3] ▶
- Callsign Display Slots [8] ▶
- Show Log Fields
- Show Confirmed Bands ▶
- Show Titlebar Band Activity
- Alert Types Summary Window F1
- Callsign History Window F3
- Text Message Window F5**
- Decodes History Window F9
- Band Activity Window F2
- Band Activity Rx Continent Filter ▶
- Open Browser to HamSpots.net F7
- Macros Window F6

X Text Message

Send a short text message. Message is sent without confirmation of receipt. The recipient station may not be using JTAlert or may have messages turned off.

Callsign

128 Characters Max

Received Messages - Last 5

9K2OF [2018-AUG-30 11:56:41 utc]
ok 73

CX4BAN [2018-AUG-23 14:40:42 utc]
73 and GDY OM !!

OZ0A [2018-AUG-15 20:02:12 utc]
see you down the log :-)

W1CBD [2018-AUG-13 12:54:42 utc]
Via the bureau, understood. 73

Halt Tx

Answer

Gen msg

Free msg

0/100 WD:0m

40m	10m
30m	6m
20m	2m

(Last QSO : 12m FT8, 2018-SEP-05)

160 80 60 40 30 20 17 15 12 10 6

WSJT-X - Wide Graph

Controls

800 1000 1200 1400

122645 0 1.1 946 ~ HB9CAL GB1AAT -13
 122700 -10 2.3 432 ~ CQ RN3DN KO84
 122730 -7 2.3 432 ~ PD4WIM RN3DN -18
 122800 -7 2.2 432 ~ PD4WIM RN3DN RR73
 122830 -2 2.2 432 ~ PD4WIM RN3DN 73
 122900 1 2.2 432 ~ PD4WIM RN3DN 73
 122915 -12 2.1 1080 ~ K6JDC OZ4ZT -12
 122945 -2 2.1 1080 ~ K6JDC OZ4ZT RRR
 123000 -4 2.1 432 ~ CQ RN3DN KO84
 123000 -19 2.5 713 ~ HL3EHK IU1KAX JN45
 123015 -6 2.1 1080 ~ K6JDC OZ4ZT 73
 123030 -13 2.1 432 ~ CQ RN3DN KO84

160m 0,000 000

RN3DN [-13dB FT8]

Worked B4 : 2018-FEB-23

Country : European Russia
 Continent : EU
 CQ Zone : 16
 Distance : 2,211 km
 Bearing : 53

* Wanted Grid (KO84)
 * Wanted Prefix (RN3)

Decode : CQ RN3DN KO84

Tx even/1st
 Tx 1400 Hz
 Rx 1400 Hz
 Hold Tx Freq
 Report -15
 Auto Seq Call 1st
 NA VHF Contest

Calling CQ	Answer
<input type="button" value="CQ"/>	<input type="button" value="Gr"/>
<input type="button" value="dB"/>	<input type="button" value="R+"/>
<input type="button" value="RRR"/>	<input type="button" value="73"/>
<input type="text"/>	<input type="text"/>
CQ DX IK2QIN	

X JTAler 10.14 IK2QIN [~,???m,HRD5,F,#1] (Updates!) | Alerts | Settings | View | Sound OFF | ? | 160 80 60 40 30 20 17 15

Call	Name	QTH	Grid	Comments	PWR	Time	Country Name	State	CQ
▲	RN3DN - B4								
	-13 Russia (EU)								

EA7DT IM76 1205 Spain 14

QSO B4 Name QTH Grid Comments PWR Time Country Name State CQ



```

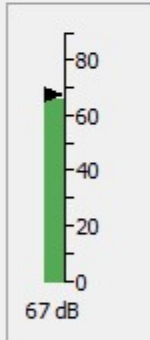
123815 -11 0.1 2311 ~ DL1BBO HL3EIL RRR
123815 -3 -1.8 2479 ~ Z33F OH2BMN KP20
123815 -14 0.1 527 ~ CQ JH2AMN PM85
123815 -5 0.1 938 ~ BG3UPA F1FET 73
123815 -18 0.1 993 ~ CQ MM0HVU IO85
123815 -8 0.3 1891 ~ CQ OH8MXJ KP23
123815 -8 0.3 2131 ~ JH3WLT ES4NY RR73
123815 -13 0.4 2485 ~ K3JGJ UA0LDW -19
123815 -22 0.4 498 ~ YO9HP 9G5ZS R-13
123815 -19 0.6 990 ~ F4HRR YB3BBF OI72
123815 -18 0.1 2275 ~ SP9VFR JA4HXF R-04
123815 -23 0.2 2737 ~ CQ CO8LY FL20

```

Log QSO Stop Monitor Erase Decode Enable Tx Halt Tx

20m

14,074 000



DX Call EA7DT **DX Grid** IM76

Az: 235 1543 km
 Lookup Add

2018 set 08
12:38:35

Tx even/1st
 Tx 880 Hz Tx ← Rx
 Rx 880 Hz Rx ← Tx
 Hold Tx Freq
 Report -15
 Auto Seq Call 1st
 NA VHF Contest

Calling CQ Answering C

CQ Grid

dB R+dB

RRR 73

CQ DX IK2QIN

Receiving FT8

JTAlertX 2.10.14 IK2QIN [~20m,HRD5,F,#1] (Updates!) Alerts Settings View Sound OFF | ? 160 80 60 40 30 20 17 15 12 1

JH2AMN	HL3EHK - B4	MM0HVU - B4	UR5ZD	UR5GBG	OH8MXJ	SV5DKL
-14 Japan	+1 Rep. of Korea	-18 Scotland	+3 Ukraine	-03 Ukraine	-08 Finland	+6 Dodecanese
CO8LY						
-23 Cuba						

EA7DT Name QTH Grid IM76 Comments PWR Time 1233 Spain Country Name State CQ 14 IT



Rx Frequency

UTC	dB	DT	Freq	Message
123930	-2	1.4	761 ~	CQ SV0LR KM18
123952	Tx		880 ~	SV0LR IK2QIN JN45

Menus

Tx even/1st

880 Hz

761 Hz

Hold Tx Freq

Report -2 Call 1st

NA VHF Contest

SV0LR IK2QIN JN45

5/15 WD:6m

Calling CQ	Answering CQ
<input type="button" value="CQ"/>	<input type="button" value="Grid"/>
<input type="button" value="dB"/>	<input type="button" value="R+dB"/>
<input type="button" value="RRR"/>	<input type="button" value="73"/>

Gen msg
 Free msg

Alert Types

- Own Call**
- CQ and QRZ**
- Wanted Callsign**
- Wanted Prefix**
- Wanted Grid**
- Wanted US State**
- Wanted DXCC**
- Wanted CQ Zone**
- Wanted Continent**
- Wanted CQ Marathon**
- Ignored Callsign**
- Decode Keywords**

QSO History

SV0LR : FT8 QSOs - None

160m		17m	
80m		15m	
60m		12m	
40m		10m	
30m		6m	
20m	New Band	2m	

*** First FT8 QSO ***

Rx Frequency

	UTC	dB	DT	Freq	Message
P -09	123930	-2	1.4	761 ~	CQ SV0LR KM18
KU K012	123952	Tx		880 ~	SV0LR IK2QIN JN45
O -06	124000	3	0.8	761 ~	CQ SV0LR KM18
R -14	124015	Tx		880 ~	SV0LR IK2QIN JN45
A RR73	124030	1	1.3	880 ~	IK2QIN SV0LR -14
D RR73	124045	Tx		761 ~	SV0LR IK2QIN R+01

- Own Call**
- CQ and QRZ**
- Wanted Callsign**
- Wanted Prefix**
- Wanted Grid**
- Wanted US State**
- Wanted DXCC**
- Wanted CQ Zone**
- Wanted Continent**
- Wanted CQ Marathon**
- Ignored Callsign**
- Decode Keywords**
- Worked B4**
- No Alert**

Erase Decode **Enable Tx** Halt Tx Tune Menus

Calling CQ Answering CQ

CQ Grid

dB R+dB

RRR 73

SV0LR IK2QIN R+01 Gen msg

CQ DX IK2QIN Free msg

4/15 WD:6m

QSO History

SV0LR : FT8 QSOs - None

160m		17m	
80m		15m	
60m		12m	
40m		10m	
30m		6m	
20m	New Band	2m	

*** First FT8 QSO ***

160 80 60 40 30 20 17 15 12 10 6

WSJT-X - Wide Graph

Controls 800 1000 1200 14

Z33F

UTC	dB	DT	Freq	Message
123930	-2	1.4	761	~ CQ SV0LR KM18
123952	Tx		880	~ SV0LR IK2QIN JN45
124000	3	0.8	761	~ CQ SV0LR KM18
124015	Tx		880	~ SV0LR IK2QIN JN45
124030	1	1.3	880	~ IK2QIN SV0LR -14
124045	Tx		761	~ SV0LR IK2QIN R+01
124100	8	1.3	762	~ IK2QIN SV0LR RRR
124115	Tx		761	~ SV0LR IK2QIN 73
124130	10	0.8	760	~ IK2QIN SV0LR 73

- ON **CQ and QRZ**
- OFF **Wanted Callsign**
- OFF **Wanted Prefix**
- OFF **Wanted Grid**
- ON **Wanted US State**
- ON **Wanted DXCC**
- OFF **Wanted CQ Zone**
- ON **Wanted Continent**

WSJT-X v1.8.0 by K1JT - Log QSO

Click OK to confirm the following QSO:

Call	Start	End
SV0LR	08/09/2018 12:40:15	08/09/2018 12:41:15

Mode	Band	Rpt Sent	Rpt Rcvd	Grid	Name
FT8	20m	+01	-14	KM18	

Tx power: Retain

Comments: Retain

OK Cancel

Decode Enable Tx Halt Tx Tune Menus

Calling CQ	Answering CQ
CQ	Grid
dB	R+dB
RRR	73

CQ IK2QIN JN45 Gen msg

CQ DX IK2QIN Free msg

QSO His

160m	17m
80m	15m
60m	12m
40m	10m
30m	6m
20m	2m

*** First FT8 QSO ***

Sound OFF | ? | 160 80 60 40 30 20 17 15 12 10 6

Z33F -12 Macedonia	UR5ZD +1 Ukraine	YE6YE - B4 -19 Indonesia	KB1EFS -17 U.S.A.
------------------------------	----------------------------	------------------------------------	-----------------------------



SA7AH IM67
 SA YO7YO R-13
 YR W1ARY -17
 C OE3KLU -24
 A3AHJ KN30
 GR 9K2OK -08
 Q RQ2Q R-15
 A6ABO KN96
 IM UR5GBG 73
 H8MXJ KP23
 V5DKL KM46
 S 9H1ET JM75
 I RX6BH R-12
 R UX8ZA -01
 UJX G0VLF IO94
 UJX G3SBP IO80
 MF OH2BSF KP20
 VA LZ2INP RRR
 FV GW0KRL -24
 X UA0LDW PN53
 FS SQ8KMP KO11

124000	3	0.8	761	~	CQ SV0LR KM18
124015	Tx		880	~	SV0LR IK2QIN JN45
124030	1	1.3	880	~	IK2QIN SV0LR -14
124045	Tx		761	~	SV0LR IK2QIN R+01
124100	8	1.3	762	~	IK2QIN SV0LR RRR
124115	Tx		761	~	SV0LR IK2QIN 73
124130	10	0.8	760	~	IK2QIN SV0LR 73

Wanted Prefix
 Wanted Grid
 Wanted US State
 Wanted DXCC
 Wanted CQ Zone
 Wanted Continent
 Wanted CQ Marathon
 Ignored Callsign
 Decode Keywords

Menus

Tx even/1st
 Tx 761 Hz
 Rx 762 Hz

Calling CQ	Answering CQ
<input type="text" value="CQ"/>	<input type="text" value="Grid"/>
<input type="text" value="dB"/>	<input type="text" value="R+dB"/>
	<input type="text" value="73"/>

Gen msg
 Free msg

JTAlertX : QSO to HRD V5/V6

SUCCESS : QSO logged.
 Callsign : SV0LR
 Frequency : 14.074 MHz
 Logged Mode : FT8

QSO History

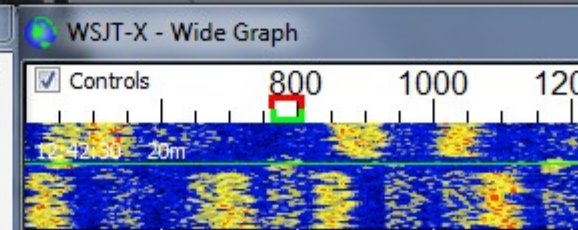
SV0LR : FT8 QSOs - 1 on 1 band

160m		17m	
80m		15m	
60m		12m	
40m		10m	
30m		6m	
20m	Worked	2m	

(Last QSO : 20m FT8, 2018-SEP-08)

[3] 6/15 WD:6m

H8MXJ	V5DKL	9H1ET	UA0LDW
10 Finland	+9 Dodecanese	-03 Malta	-21 Russia (AS)



My Logbook x Award Tracking

Add Contest Delete Modify Cut Copy Paste Refresh Width Layout Edit Selections QRZ.com Awards Backup More... Filter QSL Award

LOTW Upload LOTW Download

QSO date	Time on	Call	Mode	QSL sent	QSL received	Sent	Rcvd	Band	Country	State
08/09/2018	11:57:00	UN7ZAF	SSB	No	No	59	59	20m	Kazakhstan	
08/09/2018	11:51:00	RF9C	SSB	No	No	59	59	20m	Asiatic Russia	
08/09/2018	11:48:00	4Z5LY	SSB	No	No	59	59	20m	Israel	
08/09/2018	11:39:00	W4AAW	SSB	No	No	59	59	20m	United States	
08/09/2018	11:37:00	K2RET	SSB	No	No	59	59	20m	United States	
08/09/2018	11:35:00	JE6RPM	SSB	No	No	59	59	20m	Japan	
08/09/2018	11:33:00	W1LX	SSB	No	No	59	59	20m	United States	
08/09/2018	11:31:00	KD4D	SSB	No	No	59	59	20m	United States	
08/09/2018	11:30:01	K1IM	SSB	No	No	59	59	20m	United States	
08/09/2018	11:30:00	K1RM	SSB	No	No	59	59	20m	United States	
08/09/2018	11:29:00	W1OO	SSB	No	No	59	59	20m	United States	
08/09/2018	11:25:00	VY2ZM	SSB	No	No	59	59	20m	Canada	
08/09/2018	11:23:00	VE3AT	SSB	No	No	59	59	20m	Canada	
08/09/2018	11:21:00	NE1C	SSB	No	No	59	59	20m	United States	
08/09/2018	11:17:00	4X6FR	SSB	No	No	59	59	20m	Israel	
08/09/2018	11:16:00	7Z1IS	SSB	No	No	59	59	20m	Saudi Arabia	
08/09/2018	11:11:00	RM9T	SSB	No	No	59	59	20m	Asiatic Russia	
08/09/2018	11:09:00	YM7KA	SSB	No	No	59	59	20m	Turkey	
08/09/2018	11:05:00	4X0T	SSB	No	No	59	59	20m	Israel	
08/09/2018	11:04:00	9K2HN	SSB	No	No	59	59	20m	Kuwait	
05/09/2018	11:32:00	EA7DT	FT8	No	No	+15	+11	12m	Spain	
02/09/2018	12:58:00	DC2TL	FT8	Yes	No	+04	+01	40m	Fed. Republ...	

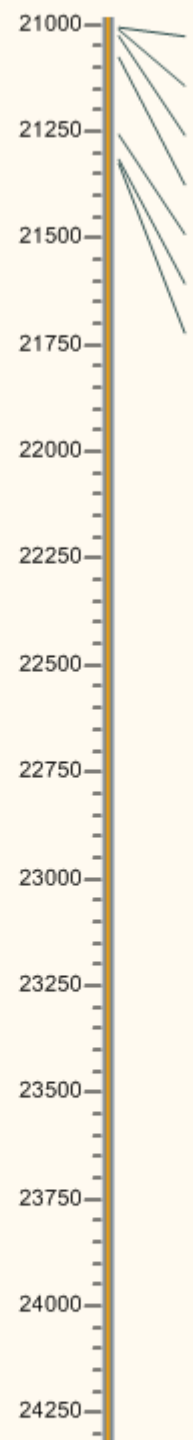
All Default ACCESS 33,955

CAP NUM

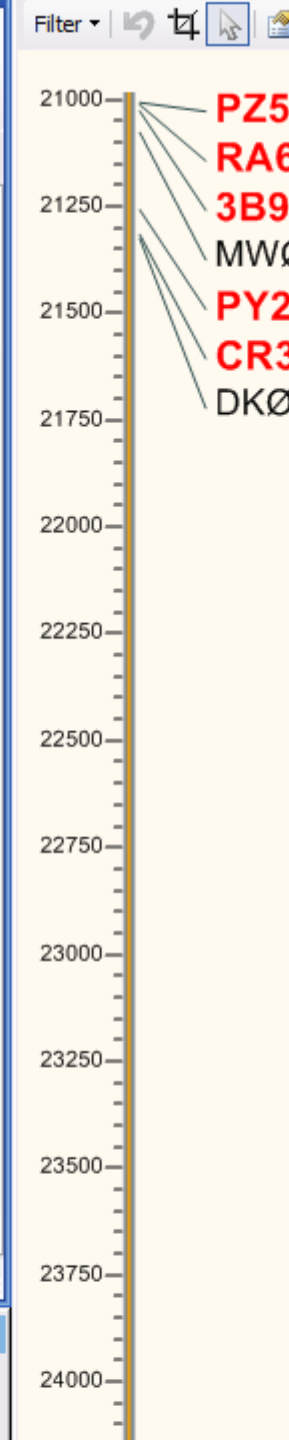
Options QRZ.com Add Spot

Heading	Spotter	Comment	DX Country
39°	F5ROW	PX test tu 599001	European Russia

Greyline



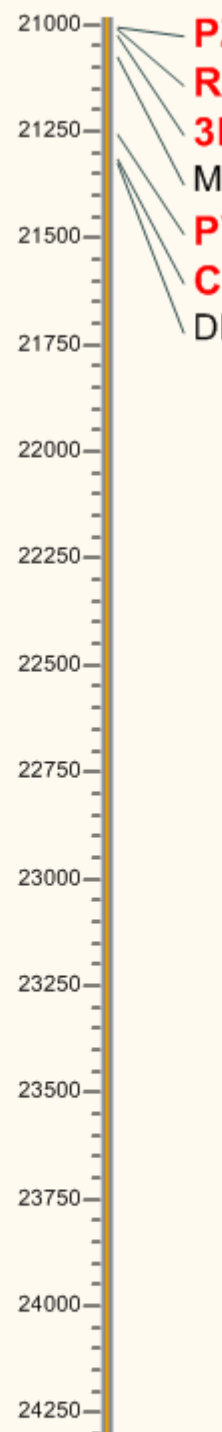
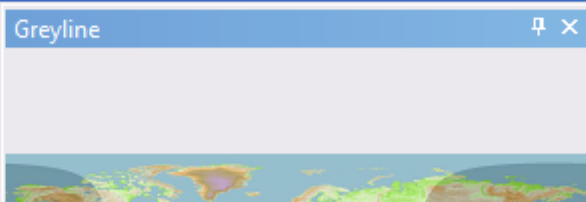
Date	Time on	Call	Mode	QSL sent	QSL received	Sent	Rcvd	Band	Country
09/2018	12:40:00	SV0LR	FT8	Requested	Requested (Submitted)	+01	-14	20m	Greece
09/2018	11:57:00	UN7ZAF	SSB	No	No	59	59	20m	Kazakhstan
09/2018	11:51:00	RF9C	SSB	No	No	59	59	20m	Asiatic Russia
09/2018	11:48:00	4Z5LY	SSB	No	No	59	59	20m	Israel
09/2018	11:39:00	W4AAW	SSB	No	No	59	59	20m	United States
09/2018	11:37:00	K2RET	SSB	No	No	59	59	20m	United States
09/2018	11:35:00	JE6RPM	SSB	No	No	59	59	20m	Japan
09/2018	11:33:00	W1LX	SSB	No	No	59	59	20m	United States
09/2018	11:31:00	KD4D	SSB	No	No	59	59	20m	United States
09/2018	11:30:01	K1IMI	SSB	No	No	59	59	20m	United States
09/2018	11:30:00	K1RM	SSB	No	No	59	59	20m	United States
09/2018	11:29:00	W1OO	SSB	No	No	59	59	20m	United States
09/2018	11:25:00	VY2ZM	SSB	No	No	59	59	20m	Canada
09/2018	11:23:00	VE3AT	SSB	No	No	59	59	20m	Canada
09/2018	11:21:00	NE1C	SSB	No	No	59	59	20m	United States
09/2018	11:17:00	4X6FR	SSB	No	No	59	59	20m	Israel
09/2018	11:16:00	7Z1IS	SSB	No	No	59	59	20m	Saudi Arabia
09/2018	11:11:00	RM9T	SSB	No	No	59	59	20m	Asiatic Russia
09/2018	11:09:00	YM7KA	SSB	No	No	59	59	20m	Turkey
09/2018	11:05:00	4X0T	SSB	No	No	59	59	20m	Israel
09/2018	11:04:00	9K2HN	SSB	No	No	59	59	20m	Kuwait



QSO date	Time on	Call	Mode	QSL sent	QSL received	Sent	Rcvd	Band	Country
08/09/2018	12:40:00	SV0LR	FT8	No	No	+01	-14	20m	Greece
08/09/2018	11:57:00	UN7ZAF	SSB	No	No	59	59	20m	Kazakhstan
08/09/2018	11:51:00	RF9C	SSB	No	No	59	59	20m	Asiatic Russia
08/09/2018	11:48:00	4Z5LY	SSB	No	No	59	59	20m	Israel
08/09/2018	11:39:00	W4AAW	SSB	No	No	59	59	20m	United States
08/09/2018	11:37:00	K2RET	SSB	No	No	59	59	20m	United States
08/09/2018	11:35:00	JE6RPM	SSB	No	No	59	59	20m	Japan
08/09/2018	11:33:00	W1LX	SSB	No	No	59	59	20m	United States
08/09/2018	11:31:00	KD4D	SSB	No	No	59	59	20m	United States
08/09/2018	11:30:01	K1IMI	SSB	No	No	59	59	20m	United States
08/09/2018	11:30:00	K1RM	SSB	No	No	59	59	20m	United States
08/09/2018	11:29:00	W1OO	SSB	No	No	59	59	20m	United States
08/09/2018	11:25:00	VY2ZM	SSB	No	No	59	59	20m	Canada
08/09/2018	11:23:00	VE3AT	SSB	No	No	59	59	20m	Canada
08/09/2018	11:21:00	NE1C	SSB	No	No	59	59	20m	United States
08/09/2018	11:17:00	4X6FR	SSB	No	No	59	59	20m	Israel
08/09/2018	11:16:00	771IS	SSB	No	No	59	59	20m	Saudi Arabia

Options | QRZ.com | Add Spot

Heading	Spotter	Comment	DX Country
316°	K4PVJ		Wales



ARI

CASALE M.TO

GRAZIE E BUONI DX IN

FT8

SU WWW.IK2QIN.COM TROVATE I PROGRAMMI
FT8 E JTALERT NELLA PAGINA DOWNLOAD